

**QUOTE**  
"He is the greatest artist who has embodied in the sum of his works, the greatest number of the greatest ideas."  
—John Ruskin

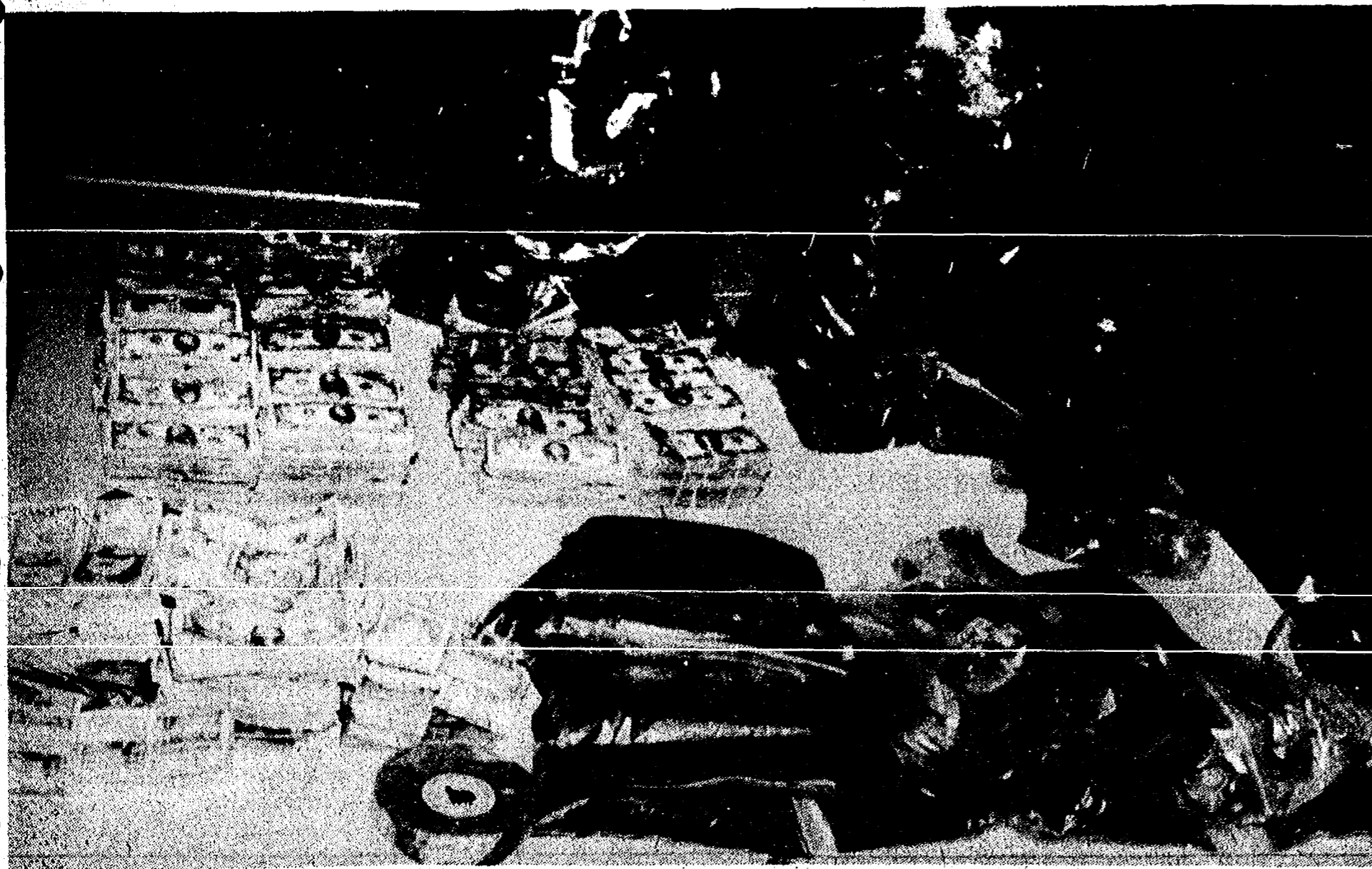
# The Chelsea Standard

25¢  
per copy

ONE HUNDRED-FOURTEENTH YEAR—No. 35

CHELSEA, MICHIGAN, WEDNESDAY, FEBRUARY 1, 1984

16 Pages This Week



**A LOT ON THE TABLE:** Some \$416,000 in cash and part of a haul of more than 100 pounds of marijuana were put on the table and photographed following a major drug bust in Lyndon township conducted by the Washtenaw county sheriff's department and state police.

## Over \$1 Million In Cash, Drugs, Property Seized

Washtenaw sheriff's deputies and members of the state police, working together, have seized cash, illicit drugs and property worth well over a million dollars in raids on properties in Lyndon township, sheriff Tom Minick announced yesterday.

Confiscated were \$416,000 in cash, more than 100 pounds of marijuana, "significant" amounts of cocaine, and property worth an estimated \$580,000 including houses, land, four motorcycles and 10 automobiles.

The drug bust was made under a recently enacted law which allows police officials to seize and foreclose on property owned by persons suspected of drug dealing.

Minick named five persons who will, he said, be subsequently charged in criminal warrants. They are Howard Queenan, Pamela K. Queenan, Matthew Queenan, Lorraine McKernan, and Dortha R. Blaskie.

Properties seized are located at 10001 Joslin Lake Rd., 10396

Hadley Rd. and 5821 Bush Rd., Minick said.

"This was a major drug-dealing operation," Minick said, "a large source of supply for this area. I hope this bust will let people know that we are cracking down hard on drugs and that anybody caught will not get off lightly."

Minick acclaimed the civil forfeiture law as an important tool in law enforcement against drugs.

"We're looking at a new concept in narcotics investigation and enforcement," he said. "This law really steps on the violators. Instead of fines and short prison terms, they have to surrender their property which can be sold at auction to recover the costs of investigation and arrest. It should make people think twice before going into the drug business."

The sheriff said investigation into the Lyndon township operation began late last year following a tip from an informant. Search warrants were sought and

six properties were raided on Jan. 11. The cash and drugs were seized at three of the six places.

Information on the results of the raids was not released until yesterday, Minick said, because necessary court procedures under the civil forfeiture law were not completed until last weekend.

Asked if area drug dealers may tend to set up their operations in rural areas instead of in the cities, Minick replied, "That is probably true as a general rule. There isn't as much continuous police surveillance out in the country."

"On the other hand, neighbors tend to notice large amounts of vehicle traffic and other unusual activity in rural areas, and report it. I want to make it plain that dealing in drugs isn't a 'safe' activity anywhere. We're going after it wherever it occurs, and this new law will help us a lot. This bust is just a beginning. We're looking at some other suspicious places."

## Meeting Scheduled Feb. 7 on Study Of 'Downtown'

Results of a Chelsea downtown business district "revitalizing" study will be presented on Tuesday, Feb. 7, in the Citizens Trust Co. meeting room beginning at 9 a.m. and lasting through the day.

The study has been done by the Ann Arbor planning firm of Johnson, Johnson & Roy (JJR) at a cost of \$3,850, which will be paid with donations from Chelsea merchants who volunteered to put up \$100 apiece for it.

Whether anything more happens will depend on the outcome of the Feb. 7 meeting. JJR has proposed a long-term contractual arrangement with the Chelsea Chamber of Commerce for consultation and design services.

The workshop is scheduled from 9 a.m. to noon and 1:30 to 4 p.m. on Feb. 7. The more than three dozen persons who donated \$100 each have been invited by letter to attend. Others interested may make reservations by calling Mark Heydlauff, chairman of

the Chelsea Chamber's downtown development committee at 475-1221.

"We urgently need your presence," Heydlauff said, "and participation in the total workshop is important so that we can have continuity of input. The plan, if it is to be effective, must have our suggestions."

The preliminary plan, along with photographs of the Chelsea downtown business district and examples of improvements made in other communities, will be used to generate discussion of what can be achieved locally.

The workshop will conclude with a range of ideas for improvement projects and hoped-for consensus on priorities for phasing them in over time.

In a Nov. 1 presentation to local Chamber of Commerce members, Carl Johnson of JJR pushed an approach based on preserving the central business district's historic and architectural features while doing something to

get the heavy through-traffic off Main St.

At a second meeting, village government officials were invited to listen to essentially the same proposals.

Village president Jack Merkel and William J. Bott of Citizens Trust Co. are closely involved with Heydlauff in the downtown revitalization project. Bott is hosting the Feb. 7 workshop.

## Local Woman Dies In Fire at Home

A Chelsea woman, Rose B. Venne, 73, died last Friday evening in a fire at her home at 527 Wilkinson St. She was found dead in a bedroom of the one-story dwelling.

Cause of death was listed as asphyxiation from smoke and fumes caused by the fire. Chelsea

fire chief Paul E. Hankerd said the origin of the blaze has not been determined and remains under investigation.

The fire apparently broke out in the bedroom where Miss Venne was found dead, Hankerd said. It was put out with an estimated \$28,000 loss to the house and contents.

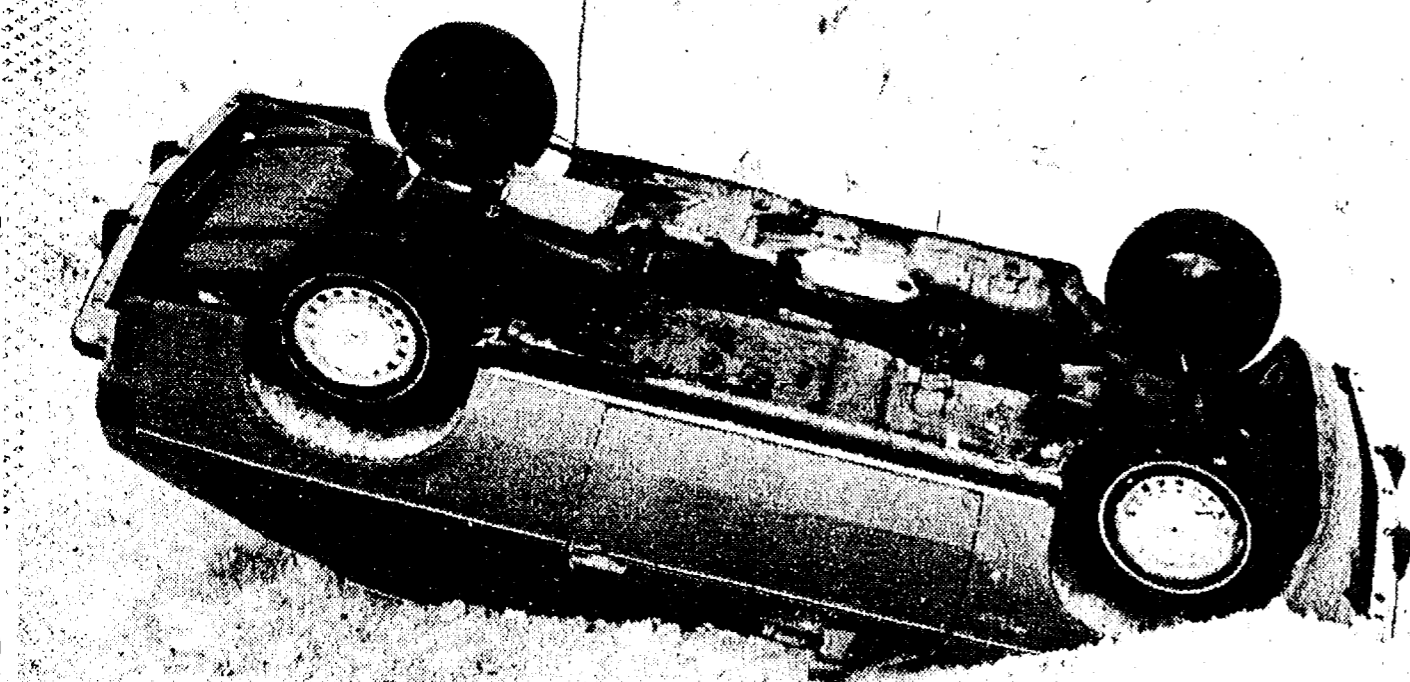
The fire department received the alarm on a call from a neighbor at 5:14 p.m. and was on the scene within six minutes. They quickly put out the fire with little apparent damage to the exterior of the house. A few windows were broken to allow firemen to get inside.

"There was considerable damage from flame, smoke and water on the inside," Hankerd said. "Miss Venne apparently was in the bedroom where the fire broke out. She was not an invalid and was able to walk. There was no smoke detector in the house."

"The fire wasn't all that bad," (Continued on page two)



**GETTING READY FOR FAIR:** South school students Kim Smith, Greg Rickard, Tracy Dufek and Kevin Coy (left to right) prepare for the school's annual Fun Fair on Feb. 4. The event is the school's major fund-raiser for new equipment.



**WEATHER CHANGES, SO DOES DRIVING:** The extreme cold weather which prevailed through December and most of January moderated last week, and the change brought periods of freezing rain and snow which made driving

hazardous at times. The occupants of the car in top picture were shaken up but not badly hurt when their vehicle skidded and rolled over on M-52 north of Chelsea. The car in the bottom photo slid off the road on M-52 just outside the village limits.

Established 1871 Telephone (313) 475-1371

## The Chelsea Standard

Walter P. and Helen May Leonard, Publishers  
USPS No. 101-720

Published every Wednesday at 300 N. Main Street, Chelsea, Mich. 48118, and second class postage paid at Chelsea, Mich. under the Act of March 3, 1879. Postmaster: Send address changes to The Chelsea Standard, 300 N. Main St., Chelsea, Mich. 48118.

Subscription Rates (Payable in Advance)  
In Michigan: One year in advance \$8.00 Six months \$4.50 Single copies mailed \$ .50  
Outside Michigan: One year in advance \$10.50 Six months \$6.00 Single copies mailed \$ .75MEMBER  
**NATIONAL NEWSPAPER**  
Association - Founded 1865  
National Advertising Representative:  
MICHIGAN NEWSPAPERS, INC.  
827 N. Washington Ave.  
Lansing, Mich. 48906

## JUST REMINISCING

Items taken from the files of The Chelsea Standard

## 4 Years Ago . . .

Thursday, Feb. 7, 1980—

Residents of a small slice of Sharon township continue to regard the water in their wells with suspicion this week, after samples taken to determine the presence of toxic chemicals in the wells yielded no conclusive results. Further tests have been ordered.

The week of Feb. 11-14 has been designated as this year's Winter Carnival at Chelsea High School.

Chelsea Lumber Co. was robbed of about \$20 in small change from a cash box sometime between 5:45 and 9:45 p.m. on Monday, Feb. 4.

Milan was eliminated from a shot at the SEC title last Saturday night as Chelsea's varsity cagers outlasted the Big Reds in a heavily defensive battle, 45-37.

## 14 Years Ago . . .

Thursday, Feb. 5, 1970—

Fire losses climbed to an all-time high in 1969 for the Chelsea area, being up some \$92,159 over 1968.

The number of crimes in 1969 increased over those of 1968, but the number of major crimes has decreased according to Chelsea police Chief George Meranuck, who outlined the crime comparison between those two years.

Mothers marched door to door in Chelsea Friday night, Jan. 30, to collect \$701.70 in the annual Mother's March against birth defects for the March of Dimes.

A local group, 100 strong, known as Chelsea Musical Enterprises (CME) has made a dream come true for Buddy Johnson, owner of J&amp;S Tool Co. Buddy has just finished a recording session in Detroit and within 10 days the record will be available to the public.

## WEATHER

## For the Record . . .

	Max.	Min.	Precip.
Wednesday, Jan. 25	39	26	.00
Thursday, Jan. 26	37	27	.02
Friday, Jan. 27	36	24	.25
Saturday, Jan. 28	25	18	.03
Sunday, Jan. 29	28	28	.00
Monday, Jan. 30	30	29	.30
Tuesday, Jan. 31	35	12	.00

## 24 Years Ago . . .

Thursday, Feb. 4, 1960—

Chelsea's January March of Dimes campaign total as listed to date by Mrs. John Keusch, campaign chairman, indicates that the amount collected is approximately \$100 more than was collected here during the 1959 campaign.

Named as Chelsea's outstanding young man of 1959 at the Jaycee's annual Distinguished Service Award dinner at Schum's Restaurant Tuesday evening was Robert Daniels, co-manager with his brother, James, of the Chelsea Lumber Co.

Hustle, hustle, hustle and rebound, that was the word around the Bulldogs' pen last Friday night as they upset the previously undefeated conference leader, Saline, 60-51.

Dr. P. E. Sharrard and Dr. W. C. Lane inoculated 203 dogs with anti-rabies vaccine at a clinic held at Sylvan Town Hall last week.

## 34 Years Ago . . .

Thursday, Feb. 2, 1950—

The committee in charge of the local observance of the World Day of Prayer met in the Methodist church on Thursday afternoon to begin planning this year's service which will be held in the Methodist church on Friday, Feb. 24.

Chelsea High's Bulldogs hoisted themselves back into the title picture last Friday night as they roared from behind in the second half to batter a young, scrappy and potentially dangerous Roosevelt Roughrider quintet, 41-30, in the large Ypsilanti Central gym.

Seventy parents accept the invitation to visit the school Tuesday evening for the Parent-Teacher conference which had been scheduled to give parents an opportunity to meet the teachers and informally discuss their children's school problems with them.

In March 1983, 9.8 million families were principally supported by women who were divorced, separated, widowed, or never married. These families accounted for 16 percent of all families in the U. S., up 5 percentage points from 1970.

## ★ MICHIGAN MIRROR ★

By Warren M. Hoyt, Secretary, Michigan Press Association

## Consent Agreement Reached On State Prisons

A consent decree with the U. S. Department of Justice, requiring \$30 million in improvements to Michigan's three largest prisons over the next three years, has been approved by the state Corrections Commission.

The action came after Attorney General Frank Kelley said the decree represents the first time a state has negotiated a settlement with the federal government in improving prison conditions.

Negotiations with the Department of Justice began last year.

John Smietanka, a Grand Rapids U. S. district attorney, said the agreement was an effort to recognize the "rights of prisoners and to recognize the State of Michigan as principal responsibility for running the prisons in a constitutional manner."

The Corrections Commission was told by Assistant Attorney General Andrew Quinn that the final order was not substantially different than a proposed agreement reached last October.

The most significant difference dealt with the state reporting of the changes it will make at the Southern Prison at Jackson, the Michigan Reformatory at Ionia and the Marquette Branch Prison.

Under the agreement, the state will keep reports on improvements and corrections to the facilities and the federal government will have power to inspect the prisons and review the reports.

Originally, the reports were to be sent by certain deadlines to the federal government.

Under the decree, the state has created an improvement plan

which will spend about \$10 million on improved medical care, \$9 million on sanitation improvements, \$5 million on fire safety and \$5 million to reduce overcrowding.

Additionally, the decree will provide greater inmate protection by separating offender groups from each other, requiring indoor exercise areas and increasing activity time outside cells and requiring larger cells for segregated prisoners, a provision which will require substantial modifications at Marquette.

Those improvements include additional lighting in each prison, pest and vermin control, hiring of environmental sanitarians in each prison, improved ventilation, increased medical staff, cleared exits for fire escapes, smoke detectors and fire extinguishers in cellblocks and galleries, widened hallways, improved solitary confinement cells and guaranteed access to law libraries.

The order also provides for hiring staff for a new \$18 million hospital being built at the Jackson prison, which was ordered under another court decree.

The plan includes specific timetables by which different improvements must be accomplished. Many of the first activities include developing plans for the final projects.

For example, the decree requires that within 90 days of adoption of the order by the federal court, a solid waste plan must be developed, within 60 days a plan for adequate health care access must be developed, in 60 days the department has to unblock all fire exit areas and within 120 days it must install fire

extinguishers and sprinkler systems.

Corrections director Perry Johnson said he will submit soon to the legislative Appropriations Committee a request for a \$9 million supplemental for this fiscal year.

Kelley said the Legislature will not have much flexibility in altering or disregarding the spending proposals as the decree will become an order of the U. S. District Court.

The decree followed a federal investigation into conditions at the prisons following riots which occurred at the three facilities in 1981. Kelley said federal action might have been forestalled had voters in 1980 approved a proposal to raise the income tax to build new prisons.

## Instrumentalists Chosen for CHS Musical 'Pippin'

Selected Instrumentalists have begun work on the Chelsea High school musical, "Pippin."

The music for the show is a bit different from the typical high school musical score, because keyboard instruments, guitar, and percussion are so important. The show was written during the last 10 years and has an upbeat sound. The music has a lot of exciting rhythms which make it interesting to learn, and which requires excellent musicians.

June Warren, the show's music director and conductor of the pit orchestra, states that the musicians involved this year are able to handle the music.

Persons involved in the orchestra this year include Kathy Jorgensen, Susan Schmunk, Norman Weber, Willem Van Reesema, Wendy Westphal, Jennifer Lindsay, Alison Chasteen, Kim Collins, Laura Koeppele, Missy Young, Gar DeYoe, Jim Weber, Jill Flintoft, Donna Palmer, Tom Murray, and Joe Simon.

"Pippin" will be presented Feb. 23-25. Tickets will be available at the Chelsea Cleaners, beginning Feb. 10.

## Stockbridge Private Goes to West Germany

U. S. Army Pvt. Scott N. Jacobs, son of Dennis C. and Karen A. Jacobs of Stockbridge, has arrived for duty in Bad Kissingen, West Germany.

Jacobs, a cavalry scout with the 11th Armored Cavalry Regiment, was previously assigned at Fort Knox, Ky.

He is a 1983 graduate of Stockbridge High school.

## JAMES BARRY

ACCOUNTANT  
ACCOUNTING AND  
BOOKKEEPING SERVICES  
INCOME TAX SERVICEFor Businesses and  
Individuals

9412 HORSESHOE BEND

DEXTER

Telephone 426-2395

For An Appointment

## Martin Straub Named To County Health Board

County Commissioner Martin L. Straub, Dexter township Republican, has been appointed to the Washtenaw County Board of Health, somewhat to his surprise.

He was a compromise candidate, elected by a 5-4 vote of the county Board of Commissioners following a deadlock.

"I really hadn't considered myself a candidate for the position," Straub said. "I favored someone with more technical expertise in the health field than I have. I'm an engineer, not a health professional."

It turned out to be a hotly contested appointment, and Straub got the job after no other aspirant could muster the necessary five commission votes.

The board of health serves as an advisory appeals body to the county health department.

Straub said he intends to direct his attention to health problems in the "lakes area" north and west of Chelsea and Dexter. "I believe there are some concerns, and I want to address them."

## Fatal Fire

(Continued from page one)

and we are still trying to determine exactly what happened. However, there is no evidence of foul play. It looks like a tragic accident."

Subscribe today to The Standard.

By  
**Dr. Howard Reznick**  
and  
**Dr. Paul L. Tai**  
PODIATRISTS

## ON YOUR FEET

## SURGICAL CORRECTION OF CORNS

If you've been troubled by a chronic corn condition or similar lesions that keep occurring on the surfaces of your toes, you podiatrist may advise you to have this condition corrected surgically. Chronic corns or corn-like lesions are sometimes a symptom of muscle imbalances and improper posture. If this is the case,

your toes may be responding by contracting, then rubbing against your shoes. When irritation of the toes becomes chronic and painful, requiring temporary relief at frequent intervals, your podiatrist may use x-ray studies to find out if there has been any bone en-

largement. He may then recommend minor surgery. This condition can often be helped permanently through a surgical procedure involving removal of the bony tissue.

Whether this condition is recent or has been causing you pain for some time, you should have your feet examined by your podiatrist so the condition can be treated and corrected.

**Dr. Howard Reznick**

and

**Dr. Paul L. Tai**

PODIATRISTS

1200 S. Main St.

475-1200



**FOR PROFIT**

See us for feed needs!

**Feed Formulas Tested, Proved To Get Results**

Extra proteins, vitamins and minerals in proper balance, scientifically blended, make our feeds real profit producers for you.

**Farmers' Supply Co.**

Phone 475-1777

## The Importance of Planning

It is only natural to put things off, but proper planning can spare a family traumatic decisions and financial burdens in the event of one's death. Pre-arranging a funeral may seem a difficult task, but there can be peace of mind for an individual who knows his or her wishes will be followed. For more information and guidance in funeral pre-arrangement . . . why not visit us or write for your FREE Pre-arrangement Booklet.

Please send me my copy of "My Specific Requests"

Name \_\_\_\_\_

Address \_\_\_\_\_

## Staffan-Mitchell FUNERAL HOME

"Since 1862"

124 PARK ST. PH. 475-1444

John W. Mitchell, Owner-Director

MEMBER BY INVITATION



NATIONAL SELECTED MORTICIANS

## CHANNEL MASTER SATELLITE

Sales &amp; Installation

Do-It-Yourself Kits  
Priced from \$2,195.00**LOY'S TV CENTER**  
Ph. 769-0198COUPON SPECIAL  
PROCESSING 15¢ lb.  
Dressed WeightSLAUGHTER of  
BEEF, HOGS, LAMB

\$15.00

Offer good thru February

CS

## DUNBAR SLAUGHTER and PROCESSING of MEAT

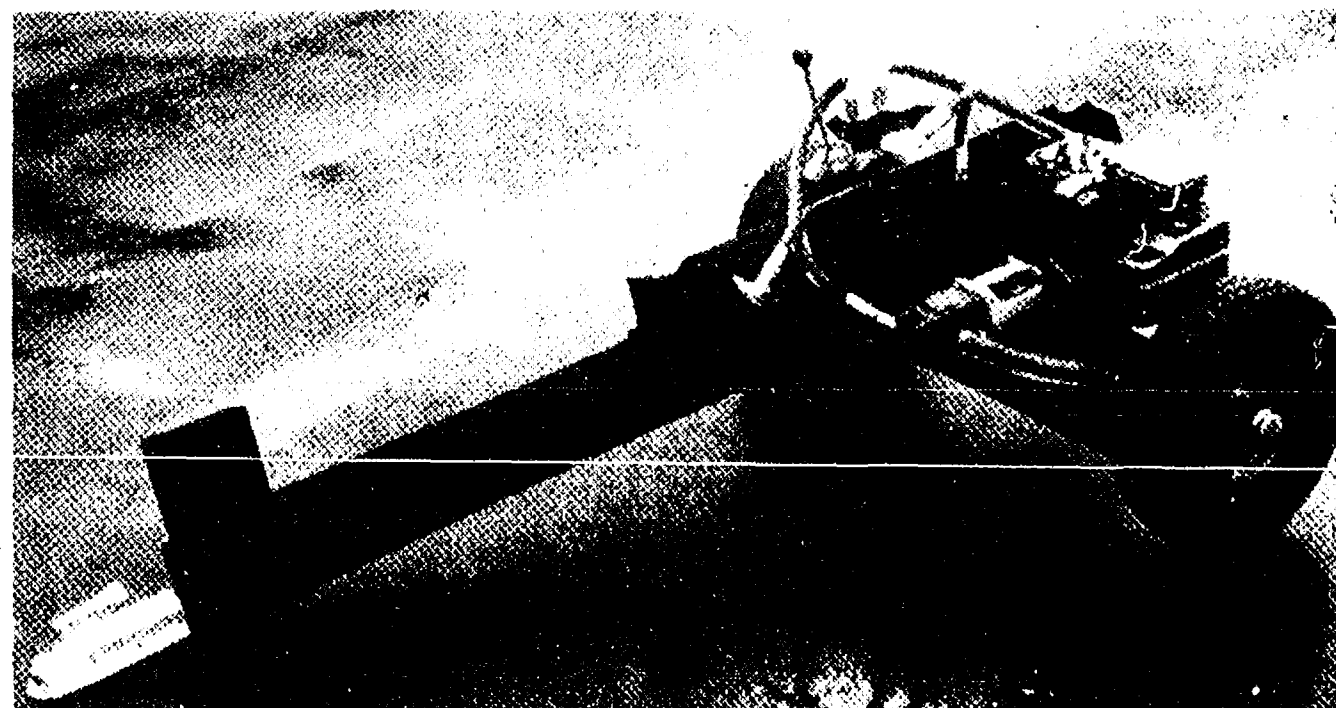
8063 Main St., Dexter

For Information Call Paul Dunbar

426-8466

WE ALSO HAUL LIVESTOCK

## "POWER-PACKED" WOODSPLITTERS



## MODEL 10350

Introduced in 1979 and has become one of our more popular models. Economical in price, includes quality features. Powered by Briggs 5 h.p. engine, mated to 2-stage pump. Delivers 11 tons of pressure at wedge. P2 second cycle time (approximate). 26" log opening. Manual-matic control for operator safety. Towable. Weighs approximately 335 lbs.

LIST— '1465  
NOW— '1150SAVE  
\$315.00

## CHELSEA HARDWARE

GARDEN 'N' SAW ANNEX

120 S. MAIN ST., CHELSEA

PH. 475-1121

## Modern Mothers Members Enjoy Fashion Show

Investment dressing was the theme for Modern Mothers Club meeting Tuesday evening held at the home of Mickey Michaud. Laurie Adams from Casual Corner presented fashions for club members. Sharon Hodgson, Mitzi Lewis, Katrina Thiel and Judi Wahl modeled. The fashions had a co-ordinating style with interchangeable accessories. Paula Miska and Judy Steger co-hosted the evening and served refreshments.

A short business meeting followed. Club members welcomed guests and a special welcome was given to Nancy Benjamin, a new member.

The next meeting will be Feb. 14 at Barb Pruess'. Topic for the evening will be "The Computer and You" with Mike Long. Guests are welcome.

For more information call 475-2664.

## Please Notify Us In Advance of Any Change in Address



Pick a sweet orange by examining the navel. Choose the ones with the biggest holes.

CLIP ALONG THIS LINE

## CLASS RING SALE

YOU MUST BRING THIS AD TO QUALIFY FOR THIS LOW PRICE

# 64<sup>95</sup>

This is the first time these class rings have ever been offered at this low price! We doubt you will find a lower class ring price this Spring. This is a limited time offer from the manufacturer. We recommend that you act quickly. Just bring this ad in to our store.

Our best selling styles in Valadium, APOLLO and FLAIR. 10 & 14K gold available at higher prices. Full lifetime warranty. Free includes special options and custom features (Full Name Option Extra). Over 200 Activity Designs to choose from.

EXCLUSIVELY BY R. JOHNS, LTD.

## WINANS JEWELRY

## S. Holmes, D. Schulze Are Married

Mr. and Mrs. Sam Eaton of Cincinnati, O., announce the marriage of their daughter, Sandra Eaton Holmes, to Dietrich Schulze on Dec. 28 in Chelsea.

The ceremony was performed at their residence on Cassidy Rd. by the Rev. Ann Marie Coleman of Guild House, Ann Arbor.

## Ruth Circle Holds January Meeting

Ruth Circle of the United Methodist Women's Society met Jan. 18 in the Crippen Building. There were 24 members and two guests present. Norma Johnston and Florence Sizemore were introduced as new members.

Martha Earles, chairperson, opened the meeting with devotions which consisted of a quotation and prayer.

Roberta Broughton presented a chart showing what pledges would be used for as this was our pledge meeting.

Mrs. Mary Esther Reed was introduced as our new spiritual life chairman.

Refreshments were served at tea tables centered with a vase containing carnations. Co-hostesses were Elaine McCalla and Nedra Tarasow.



DROUARE-CRAWLEY: Mrs. Harold A. Drouare of Grass Lake, announces the engagement of her daughter, Rita Patricia, to Edgar T. Crawley, Jr., son of Mr. and Mrs. Edgar Crawley of Dexter. She is a graduate of Manchester High school. He is a graduate of Dexter high school. Both are graduates of Michigan State University, earning bachelor's degrees in packaging engineering, and are presently employed at Hughes Aircraft Co. in California as packaging specialists.

## Senior Citizen Nutrition Program

Weeks of Feb. 1-8

### MENU

Wednesday, Feb. 1—Turkey divan, pickled beet salad, whole wheat bread, butter, fresh orange, milk.

Thursday, Feb. 2—Salisbury steak, whipped potatoes, peas and carrots, roll, butter, peaches, milk.

Friday, Feb. 3—Chicken paprika, baked potato, mixed vegetables, rye bread, butter, cookies, milk.

Monday, Feb. 6—Hamburger on bun, tater tots, lettuce-spinach salad, fruit cocktail, milk.

Tuesday, Feb. 7—Swiss steak, baked potato, glazed carrots, rye

bread, butter, apple sauce, cookies, milk.

Wednesday, Feb. 8—Barbecued chicken, hash brown potatoes, lima beans, dinner roll, butter, brownies, milk.

### ACTIVITIES

Wednesday, Feb. 1—

1:00 p.m.—Fitness.

1:00 p.m.—Bowling.

Thursday, Feb. 2—

10:00 a.m.—Ceramics.

1:00 p.m.—Needlework.

1:00 p.m.—Kitchen Band.

2:00 p.m.—Walking Club.

Friday, Feb. 3—

9:00 a.m.—Advisory Board.

Saturday, Feb. 4—

Senior Card Party.

Monday, Feb. 6—

1:00 p.m.—Bingo.

1:30 p.m.—Stained Glass.

Tuesday, Feb. 7—

10:30 a.m.—Blood Pressure.

1:00 p.m.—Travel Committee.

1:00-4:00 p.m.—Kiwanis Tax Help.

1:00 p.m.—Euchre.

Wednesday, Feb. 8—

1:00 p.m.—Fitness.

1:00 p.m.—Bowling.

Standard Classified ads get quick results!

## Preparations Underway For Prom

Preparations are off to a good start for the Chelsea High school prom on Saturday, May 12, according to chairman Amy Wolter.

Theme for the dance, which is sponsored by the junior class for the seniors, will be "The Royal Ball." The Jetz band from Ann Arbor will provide the music.

The prom will be held in the high school gym, which will be redecorated as a ballroom. Ideas for decorating themes and props will be welcomed by Amy Wolter, 475-2254.

## Botanical Gardens Plan Show, Sale

Friends of the Matthaei Botanical Gardens will hold their monthly lobby sale on Saturday and Sunday, Feb. 4-5, from 10 a.m. to 4:30 p.m. at the gardens, 1800 N. Dixboro Rd., Ann Arbor.

Items available will be selections of indoor plants, stationery, books on plant care and preservation of herbs and flowers. The outdoor trails and the lobby exhibit are free. There is always a fee of \$1 for the conservatory.

On Sunday, Feb. 5, docents will be at the gardens to offer guided tours through the conservatory at 2 p.m. For more information phone the gardens, 764-1168.

The educational and interesting exhibit in the lobby for the month of February will be "The World of Ferns." The selection of live ferns will be used to display the many types and forms found in the world. There will also be written material on structure, reproduction, distribution, evolutionary history, and common ferns for the home. There will be a series of black and white photos showing different fern spore patterns.

The garden grounds are open from 8 a.m. to sunset. The inside exhibits are open from 10 a.m. to 4:30 p.m. seven days a week. Closed only three days out of the year—Thanksgiving, Christmas and New Year's.

## Sarah Haselschwardt Named to Honor Roll At Lawrence Institute

Sarah E. Haselschwardt has been named to the Dean's Honor Roll for the fall day term at Lawrence Institute of Technology.

To be named to the honor roll a student must maintain at least a 3.5 grade point average and be a full-time student.

## Area Junior Women's Club Holding Membership Drive

The newly formed Chelsea-Dexter Area Junior Women's Club is sponsoring a membership drive for women who would like to become involved in serving their communities.

The club is affiliated with the General Federation of Women's Clubs, an international organization.

Some of the projects now under consideration include sponsoring an amateur talent show, holding a raffle involving a shopping spree at area businesses, pro-

moting safety by supporting the "Buckle Up" seat-belt program, and sponsoring cardio-pulmonary resuscitation (CPR) training courses.

The club is exploring the potential for an inter-community exchange with inner-city youth and a community beautification project in the spring.

Anyone interested in participating or obtaining more information may contact Lorraine Perkins at 475-2978 or Mary Beckwith at 475-9303.

## Faith In Action Volunteers Hold First Group Meeting

The first of regularly scheduled meetings for volunteers of Faith In Action House planned by its staff co-ordinator, Mrs. JoAnn Carruthers, was held as a potluck-business meeting, Tuesday, Jan. 24, at the Chelsea Community Hospital. The main objective of the meeting was to review the goals and progress to date of Faith In Action.

Faith In Action, located on the Chelsea Community Hospital campus, gives support to any member of the community (primarily Chelsea School District) who is in need, regardless of race, creed or any other classification which tends to separate our society. A fully stocked room with sized clothing for all family members is available, as well as food and some financial help based on need.

Other services which are rendered by Faith In Action personnel are Information/Referral, Crisis Intervention, Parent to Parent Program (in-home support to families with young children who have difficulty cop-

ing) and a Parents Anonymous Program (group self-help to parents who have abused or feel they have the potential to abuse their children).

Future plans include shelter for family members of patients in the Chelsea Community Hospital or domestic violence victims and a Free Health Clinic which will provide non-emergency services to families who have no insurance and cannot afford to see a doctor.

Faith In Action is staffed by Mrs. JoAnn Carruthers, house manager-board member, assisted by trained volunteers. It is open for services Monday through Friday from 9 a.m. to 4 p.m. The board of directors who support and direct this group are: president, the Rev. Fr. Jerry Beaumont; vice-president, Deacon Richard Cesarz; secretary-treasurer, the Rev. Erwin Koch and Betty Check; house manager, JoAnn Carruthers. Assistance is provided by calling 475-3305 or come to the Faith In Action House.

## Chelsea Child Study Club Discusses Finance Projects

Chelsea Child Study Club met at the home of Nancy Grau on Jan. 24.

During the business meeting Charlene Roberts was welcomed into membership.

Proposed finance projects for this year and the next were discussed. Ruth Dils is to head investigation of projects for the 1984-85 club year.

The present finance committee proposed having a rummage sale either at the Hospital Auxiliary, sale or independently.

A constitutional amendment proposed by June Flanigan was voted on and passed. Secret pals were thanked.

Wyn Schumann served as the auctioneer for a blind auction that was the program for the evening. Many laughs were had by all as well as some money being made for the club.

Refreshments were served by co-hostesses Ann Schaffner and Marion Sprague.

The next meeting will be held in the Woodland Room of Chelsea Community Hospital on Feb. 14. The program is entitled "Red Wine and Roses." Guests are welcome.

## Home-Made Bread Workshop Offered

The aroma of oven-fresh bread is hard to beat, and so is the flavor and nutritional value of the loaves that you make yourself.

Several whole grains breads will be made and tasted during the "Bread!" workshop that is being offered by Chelsea Community Education. The workshop will meet from 6:30 to 9 p.m. on Tuesday, Feb. 7 in the Home Economics Room at Chelsea High school.

Teresa Freed, Editor of "The Foodletter," will show participants how whole grain bread can add important nutritional value to family meals while helping to cut down on the food bill. Each person will participate in the mixing, kneading, and rising of a batch of bread, and will have a loaf to take home and bake after the final rising.

You may register for the workshop by calling the Chelsea Community Education offices at 475-9830.

## 'No Strings Attached' Meeting Scheduled

The monthly meeting of "No Strings Attached" will be held at 7 p.m. Tuesday, Feb. 7, at the Chelsea High school media center.

The program will be conducted by Louise Hubal with guest presenter Julie Vorus, director of the Fitness Club.

This will be the program which was cancelled in December because of inclement weather.

Mrs. Vorus will take the group through exercises which she has developed and uses in her exercise classes. Besides the physical exercise program, she will also talk about and demonstrate stress-reducing techniques.

Members are encouraged to wear comfortable clothing. For more information please contact Community Education at 475-9830.

Spring  
Is in  
the  
Air...



- Special -  
**SILK FLOWERS**

**59¢** ea.

Many kinds now available at  
**dayspring gifts**

116 s. main st.

ph. 475-7501

NEW HOURS: Mon. thru Sat., 9 a.m. to 5:30 p.m.

# DANCER'S CLEARANCE

## MEN'S

Winter Jackets... 50% Off  
Flannel Shirts... 40% Off  
Sportcoats... 1/2 Off  
Sweaters... 50% Off  
Carhartt... 20% Off  
Thermal & Duofold  
Underwear... 25% Off  
Wool Dress Pants... 50% Off  
Dress Corduroy Pants... 50% Off  
Long Sleeve Knit  
Shirts... 50% Off  
Flannel Pajamas... 1/2 Off

## WOMEN'S

All Fall & Winter Co-ordinate  
Groups... 50% Off  
Fall & Winter Blouses... 50% Off  
Robes &  
Winter Nightwear... 1/3 Off  
All Winter Coats... 1/2 Off  
Fall Dresses... 1/2 Off  
Blazers-All Corduroy  
& Wool... 1/2 Off  
Fall Sweaters... 50% Off  
All Fall Skirts... 1/2 Off  
Women's & Juniors  
Corduroy Bottoms... 50% Off

## BOY'S - 8-18

Jackets... 1/2 Off  
Sweaters... 1/2 Off  
Sportshirts... 1/3 Off  
Dress Slacks... 1/3 Off  
Thermal Underwear... 25% Off

## GIRL'S-INFANTS'

Little Girl's - Little Boy's  
Dresses... 50% Off  
Coats & Sno Suits... 1/2 Off

All Scarfs, Hats,  
Mittens... 1/3 Off

All Winter Dress Gloves,  
Mittens... 1/3 Off

# DANCER'S

Chelsea's Friendly Dept. Store

# Church Services

**Lutheran—**  
**ST. JACOB EVANGELICAL LUTHERAN**  
 The Rev. Andrew Bloom, Pastor  
 12801 Rietveld Rd., Grand Lake  
 Every Sunday—  
 9:00 a.m.—Sunday school.  
 10:15 a.m.—Worship service.

**ST. THOMAS EVANGELICAL LUTHERAN**  
 Ellsworth and Ham Rd.  
 The Rev. Paul Puffe, Pastor  
 Every Sunday—  
 9:30 a.m.—Sunday school.  
 10:45 a.m.—Worship service.

**FAITH EVANGELICAL LUTHERAN**  
 The Rev. Mark Forslinsky, Pastor  
 Wednesday, Feb. 1—  
 7:30 p.m.—Choir.  
 Thursday, Feb. 2—  
 7:30 p.m.—Constitution Committee.  
 Sunday, Feb. 5—  
 8:45 a.m.—Sunday school.  
 10:00 a.m.—Worship with Lord's Supper, sermon on Titus 3:3-4.  
 Monday, Feb. 6—  
 8:30 p.m.—Council.  
 Tuesday, Feb. 7—  
 6:00 p.m.—Confirmation.  
 Wednesday, Feb. 8—  
 7:30 p.m.—Choir.

**OUR SAVIOR LUTHERAN**  
 1512 S. Main, Chelsea  
 The Rev. Franklin H. Giesler, Pastor  
 Every Sunday—  
 9:00 a.m.—Sunday school, adult Bible class.  
 10:30 a.m.—Worship service.  
 Holy communion 1st, 3rd and 5th Sunday.  
 Every Wednesday—  
 7:30 p.m.—Advent mid-week vesper.

**ZION LUTHERAN**  
 Corner of Fletcher and Waters Rds.  
 The Rev. John R. Morris, Pastor  
 Sunday, Feb. 5—  
 9:00 a.m.—Group Sunday school.  
 10:15 a.m.—Worship service.  
 Tuesday, Feb. 6—  
 7:15 p.m.—Senior choir.

**TRINITY LUTHERAN**  
 5750 M-36, three miles east of Gregory  
 William J. Trusen, pastor  
 978-5877 church, 978-5816, pastor  
 Every Sunday—  
 8:30 a.m.—Worship service.  
 9:30 a.m.—Sunday and Bible school.  
 10:45 a.m.—Worship service.

**Church of Christ—**  
**CHURCH OF CHRIST**  
 1581 Old US-12, East  
 David L. Baker, Minister.  
 Every Sunday—  
 8:30 a.m.—Radio program-WNRS in Saline.  
 9:30 a.m.—Bible study.  
 10:30 a.m.—Worship service. Nursery available.  
 6:00 p.m.—Worship service.  
 Every Wednesday—  
 7:00 p.m.—Bible study classes for all ages.  
 First and Third Tuesday of every month—  
 7:00 p.m.—Ladies class.

**Catholic—**  
**ST. MARY**  
 The Rev. Fr. David Philip Dupuis, Pastor  
 Fall and Winter Schedule—  
 Every Saturday—  
 3:30 p.m. to 4:30 p.m.—Confessions.  
 6:00 p.m.—Mass.  
 Every Sunday—  
 8:00 a.m.—Mass.  
 10:00 a.m.—Mass.  
 12:00 Noon—Mass.

**United Church of Christ—**  
**ST. JOHN'S EVANGELICAL AND REFORMED**  
 The Rev. Paul McKenna, Pastor  
 Every Sunday—  
 10:30 a.m.—Sunday school and worship service.  
 First Sunday of every month—  
 Communion.

**BETHEL EVANGELICAL AND REFORMED**  
 Freedom Township  
 The Rev. Roman A. Reineck, Pastor  
 Every Sunday—  
 10:00 a.m.—Worship service.

**ST. PAUL**  
 The Rev. Erwin R. Koch, Pastor  
 Wednesday, Feb. 1—  
 6:00 p.m.—Chorus choir.  
 6:30 p.m.—Chapel choir.  
 6:30 p.m.—Eighth grade confirmation class.  
 7:30 p.m.—Chancel choir.  
 Sunday, Feb. 5—  
 9:00 a.m. and 10:30 a.m.—Church school classes.  
 10:30 a.m.—Morning worship.

**CONGREGATIONAL.**  
 The Rev. Kenyon Edwards, Interim Pastor  
 10:30 a.m.—Worship and Sunday school.  
 Nursery provided for pre-schoolers only.  
 Weekly activities as scheduled in Sunday bulletin.

**ST. JOHN'S**  
 Rogers Corners, Waters and Fletcher Rds.  
 Mt. Phyllis Pawson, Pastor  
 Every Sunday—  
 10:30 a.m.—Worship service, Sunday school.

**Episcopal—**  
**ST. BARNABAS**  
 The Rev. Fr. Jerrold F. Beaumont, O.S.P.  
 Every Sunday—  
 10:00 a.m.—Eucharist, first, third and fifth Sundays.  
 10:00 a.m.—Morning Prayer, second and fourth Sundays.  
 11:00 a.m.—Eucharist, second and fourth Sundays.  
 Nursery available every Sunday. Family coffee hour follows all Sunday services.

**Assembly of God—**  
**FIRST ASSEMBLY OF GOD**  
 The Rev. Phil Farnsworth, Pastor  
 Every Sunday—  
 9:45 a.m.—Sunday school.  
 11:00 a.m.—Worship service and Sunday school nursery for pre-schoolers.  
 6:00 p.m.—Evening worship.  
 Every Wednesday—  
 7:00 p.m.—Christ's Ambassadors. Bible study and prayer.

**Non-Denominational—**  
**CHELSEA FULL GOSPEL**  
 11452 Jackson Rd.  
 The Rev. Chuck Clemens, Pastor  
 Every Sunday—  
 10:00 a.m.—Sunday school.  
 11:00 a.m.—Morning worship.  
 6:30 p.m.—Evening worship.  
 Every Wednesday—  
 7:00 p.m.—Midweek prayer and Bible study.

**IMMANUEL BIBLE**  
 145 E. Summit St.  
 The Rev. John A. McLean, Pastor  
 Every Sunday—  
 8:45 a.m.—Sunday school, nursery provided.  
 11:00 a.m.—Morning worship, nursery provided.  
 6:00 p.m.—Evening worship.  
 Every Wednesday—  
 7:00 p.m.—Family hour, prayer meeting and Bible study.

**COVENANT**  
 Dr. R. J. Ratliff, Pastor  
 50 N. Freer Rd.  
 Every Sunday—  
 9:00 a.m.—Sunday school.  
 10:30 a.m.—Worship service.

**MT. HOPE BIBLE**  
 12804 Triad Rd. Grass Lake  
 Tim Rev. Leon R. Buck, Pastor  
 Every Sunday—  
 10:00 a.m.—Sunday school.  
 11:00 a.m.—Morning worship.  
 Every Wednesday—  
 7:00 p.m.—Bible study.

**NORTH SHARON BIBLE REFORMED**  
 Sylvan and Washburne Rds.  
 The Rev. William Easlen, Pastor  
 Saturday, Dec. 31—  
 10:00 a.m.—Sunday school.  
 11:00 a.m.—Worship service.  
 6:00 p.m.—Senior High Youth meeting.  
 Youth choir.  
 7:00 p.m.—Evening worship service. (Nursery available.) All services interpreted for the deaf.  
 Every Wednesday—  
 7:00 p.m.—Bible study and prayer meeting. (Nursery available.) Bus transportation available: 428-7222.

**CHELSEA CHRISTIAN MEN'S FELLOWSHIP PRAYER BREAKFAST**  
 Chelsea Hospital Cafeteria  
 First Saturday Each Month—  
 8:00 a.m.—Breakfast.  
 8:30-10:00 a.m.—Program.

**CHELSEA HOSPITAL MINISTRY**  
 Every Sunday—  
 10:00 a.m.—Morning service, Chelsea Community Hospital Cafeteria.

**Methodist—**  
**SALEM GROVE UNITED METHODIST**  
 3500 Nottan Rd.  
 The Rev. Dale B. Ward, Pastor  
 Every Sunday—  
 9:30 a.m.—Sunday school.  
 10:30 a.m.—Morning worship.

**FIRST UNITED METHODIST**  
 Parks and Territorial Rds.  
 The Rev. Larry Nichols and The Rev. David Goldsmith, Pastors  
 Every Sunday—  
 9:15 a.m.—Morning worship.  
 10:00 a.m.—Sunday school.

**WATERLOO VILLAGE UNITED METHODIST**  
 8118 Washington St.  
 The Rev. Larry Nichols and The Rev. David Goldsmith, Pastors  
 Every Sunday—  
 10:00 a.m.—Sunday school.  
 11:15 a.m.—Worship service.

**FIRST UNITED METHODIST**  
 128 Park St.  
 The Rev. Dr. David Truran, Pastor  
 Inspiration Line: 475-1852.  
 Wednesday, Feb. 1—  
 12:00 noon—Mature Minglers, in the Education Building.  
 3:30 p.m.—Praise choir.  
 6:30 p.m.—Rainbow Ringers.  
 7:15 p.m.—Tithingabulators.  
 7:15 p.m.—Carolers.  
 8:00 p.m.—Chancel choir.

Thursday, Feb. 2—  
 6:30 p.m.—Share and Study Group will meet in the Education Building.  
 Sunday, Feb. 5—  
 9:00 a.m.—Worship service, crib nursery.  
 9:00 a.m.—High School Choir.  
 10:00 a.m.—Worship service. Crib nursery for children up to the age of two and church school classes for all pre-schoolers.  
 10:30 a.m.—Kindergartners, first, and second graders leave for class session.  
 11:00 a.m.—Church school for kindergartners through grade school.  
 11:00 a.m.—Church school for adults.  
 12:00 noon—Church school classes conclude.  
 Tuesday, Feb. 7—  
 7:30 p.m.—Council on Ministries.  
 Wednesday, Feb. 8—  
 3:30 p.m.—Praise choir.  
 6:30 p.m.—Rainbow Ringers.  
 7:15 p.m.—Tithingabulators.  
 8:00 p.m.—Chancel choir.

**NORTH LAKE UNITED METHODIST**  
 14111 North Territorial Rd.  
 The Rev. David Strobe, Pastor  
 Every Sunday—  
 9:00 a.m.—Church school. Nursery available.  
 10:00 a.m.—Worship service. Nursery available.  
 11:15 a.m.—Fellowship Hour.  
 7:00 p.m.—Youth Fellowship.

**CHELSEA FREE METHODIST**  
 7656 W. Main  
 Meart Bradley, Pastor  
 Wednesday, Feb. 1—  
 7:00 p.m.—Mid-week service.  
 Thursday, Feb. 2—  
 7:00 p.m.—Evangelism class.  
 7:30 p.m.—Growth group.  
 Friday, Feb. 4—  
 Ladies fellowship and outreach.  
 Sunday, Feb. 5—  
 9:45 a.m.—Sunday school.  
 10:00 a.m.—Hospital ministry.  
 11:00 a.m.—Morning worship service.

**SHARON UNITED METHODIST**  
 Corner Pleasant Lake Rd. and M-52  
 The Rev. Evans Bentley, Pastor  
 Every Sunday—  
 10:00 a.m.—Sunday school.  
 11:00 a.m.—Worship service.

**Presbyterian—**  
**FIRST UNITED PRESBYTERIAN**  
 Unadilla  
 William D. Kuenzli, Pastor  
 Every Sunday—  
 11:00 a.m.—Worship service.

**Christian Scientist—**  
**FIRST CHURCH OF CHRIST SCIENTIST**  
 1823 Washburn Ave., Ann Arbor  
 Every Sunday—  
 10:30 a.m.—Sunday school, morning service.

**Mormon—**  
**CHURCH OF JESUS CHRIST OF LATTER-DAY SAINTS**  
 Chelsea Branch-Rebekah Hall  
 Every Sunday—  
 9:30 a.m.—Sacrament.  
 10:50 a.m.—Sunday school.  
 11:40 a.m.—Priesthood.

**Baptist—**  
**CHELSEA BAPTIST**  
 357 Wilkinson St.  
 The Rev. Barry Hampton, Pastor  
 Every Sunday—  
 10:00-10:45 a.m.—Church school.  
 10:50 a.m.—Morning worship.  
 11:20 a.m.—Junior church school.  
 6:00 p.m.—Evening fellowship.  
 Every Wednesday—  
 7:00 p.m.—Mid-week Bible study and prayer.

**GREGORY BAPTIST**  
 The Rev. W. Truman Cochran, Pastor  
 Every Sunday—  
 9:45 a.m.—Sunday school.  
 11:00 a.m.—Morning worship.  
 6:00 p.m.—Young people.  
 7:00 p.m.—Evening worship.  
 Every Wednesday—  
 7:00 p.m.—Youth group.

**FELLOWSHIP BAPTIST**  
 The Rev. Larry Mattis, The Rev. Roy Harrison, pastors.  
 682-7038  
 Every Sunday—  
 3:00 p.m.—Worship service at the Rebekah Hall.

## Kozminski Trial Started

(Continued from page one)

cross-examination by defense attorneys.

Lawyer Ivan Barris of Detroit, who represents Ike Kozminski, indicated he plans to introduce at least 10 witnesses.

An unusual feature of the trial is that each of the three Kozminskis is represented by a different attorney, none of whom are associated in legal practice.

After Barris made several statements to the press during the early days of the trial, Judge Joiner slapped a gag order on all attorneys involved, requiring that they make no public statements.

Both Fulmer and Molitoris, as well as the Kozminskis, are expected to testify later in the trial.

## Master Gardener Program Offered

How would you like to improve your gardening skills while helping others in your community? If so, the Master Gardener program is just for you.

The Master Gardener program is a 10-week training program held by the Washtenaw Co-operative Extension Service. Participants will gain knowledge in all facets of gardening—vegetables, houseplants, trees and shrubs, fruit and lawns. At the conclusion of the class, students must pass a comprehensive test.

Participants are required to donate 30 hours of their time during the gardening season to community projects. These range from giving garden talks and demonstrations, answering garden questions in the Extension office on the phone, working with youth or seniors on gardening projects, writing articles, or maintaining an exhibit garden at the County Service Center.

Meetings are held for 10 consecutive Wednesdays starting Feb. 1 through April 4 in the Washtenaw County Service Center. Class times are 10 a.m. to 3 p.m. with an hour break for a sack lunch. The fee is \$30, including materials. To apply for the class, call 973-9510 and ask for a registration form. Enrollment is limited.

## Landscape Architecture Professor Will Speak At Botanical Gardens

Sunday, Feb. 12, at 3:00 p.m. the Friends of the Matthaei Gardens will sponsor a program by Charles Cares, professor of landscape architecture and director of Arboretum. This will be a general meeting in the auditorium of the gardens, 1800 N. Dixboro Rd., Ann Arbor.

Professor Cares recently spent a sabbatical leave in Taiwan and his topic will be "Chinese Inspiration in Landscape Design." The public is invited.



**ENRICHMENT PROGRAM:** A pre-school enrichment program for future enrollees in the Chelsea elementary schools included a visit to McDonald's restaurant where Beth Sayder showed them how all those billions of hamburgers are put together and served.

## McDonald's Will Salute Olympic Games

Olympic spirits will fly high next week as Chelsea McDonald's salutes the Olympic Games.

McDonald's Olympic flag will be raised at McDonald's, Main St., on Feb. 7, the same day the Olympic flame will be lighted in Sarajevo, Yugoslavia, to begin the 1984 Winter Olympics.

"This is our tribute to the spirit of the Olympics," said Dane Gamble, Chelsea McDonald's manager. "We will also have a free breakfast for everyone involved in the celebration."

McDonald's is an official sponsor of the Summer Olympics to be held in Los Angeles this summer. McDonald's built the \$4 million

Olympic swim stadium, which will be used for aquatic events. All are welcome to join in the flag-raising ceremony.

## WICKER PLUS HOME PARTY PLAN

Love Wicker?

Host a party in February and receive a special gift.

NO ORDERING, COLLECTING OR DELIVERY.

For Details Call  
**DEBBIE WINTERS, 475-9463**  
 or  
**DIANE TURNER, 426-7316**

## Warm her heart on a cold day

Here's a valentine gift that will last a lifetime... A Love Chest by Lane. Just as wanted whether she's 16 or 60. Stylings in both traditional and contemporary. Chest shown now sale priced at just \$179.



**Merkel**  
 FURNITURE & CARPETING  
 Chelsea Ph. 475-8621  
 Open Monday and Thursday Until 8:30

## A Friendly Church



Active Christian fellowship in church-school, worship, music and caring.

### WORSHIP SCHEDULE:

Service's 9:00 and 10:00 am.  
Church School for all ages.

For complete schedule call the church office at 475-8119

## First United Methodist Church

128 Park Street  
Chelsea

Dr. David W. Truran, Pastor



Edward Curtis, M.D.

## CHELSEA PEDIATRIC CLINIC

1200 S. Main  
475-1376Hours: 9 a.m.-5 p.m. Mon.-Fri.  
9 a.m.-Noon Sat.

Phone Answered 24 Hrs. Daily



William Graves, III, M.D.

EXPERIENCE:  
 STAFF:  
 FACULTY:  
 MEMBERS:

24 years in private practice of Pediatrics.  
 St. Joseph Mercy Hospital.  
 Mott Children's Hospital, Ann Arbor.  
 University of Michigan Medical School.  
 American Academy of Pediatrics.

## A VIEW from the CLOCK TOWER

Bill Mullendore



When village clerk Evelyn Rosentreter told me a year ago that fewer than 200 ballots would be cast in the March village election, I thought she was joking. She wasn't. Exactly 198 of Chelsea's more than 2,000 registered voters turned out. Contested council seats were decided by fewer than 130 votes.

That, to me, is shameful. It doesn't speak for a community whose people talk a lot of pride and are preparing to celebrate their sesquicentennial this summer.

If the individual citizen can truly make a difference in government, it is at the local level. A single vote may not mean too much among the tens of millions cast in a national election for president, although there have been some contests back through history in which a relatively few votes made the difference. I can also recall very narrow state elections for governor, and I was present for a couple of coin-flips that broke ties in races for the Legislature.

A vacancy on the village council was decided by a single vote in 1974, 104 to 103. You can't get much closer than that.

A contest has developed for village president in the upcoming March 12 election, and there are more candidates than available seats on the village council. That situation should serve to get local citizens interested, and I hope it does. I would dislike to see anybody elected by a minority of a couple of hundred voters.

I know most of the people who are running for village offices, and I like them without exception. In no way am I going to take sides publicly in any race. A couple of candidates have asked me to sign nominating petitions, which I declined to do. A newsman can't show any political favoritism (or any other kind of favoritism, for that matter).

Believe me, I will go out and vote, and I hope everybody else eligible will do the same.

An election should not be a popularity contest based on who has the most friends. It should be decided on honest differences of opinion among those running. No two people think exactly alike, and no two individuals would conduct themselves in public office in exactly the same way. No two have the same mix of background and experience. Voters need to look at the differences, decide who would do the job best, and choose accordingly.

Serving in a village elective office is a labor of love and self-sacrifice. Nobody is going to make any money performing it. The token amounts of money paid break down into pennies per hour of service. You could earn more doing just about anything else except pure volunteer work.

That raises a question about local politics: Why do people get into it?

A long time ago I asked myself that question in connection with school board members, who put in more time and take more grief for less reward than any other group of public servants I know. The answer has to be dedication and a desire to do something, maybe make a difference. Village officials fall into the same category. There isn't much glory to be earned and certainly not enough money to make it worthwhile financially.

What I am saying is that the candidates merit the attention and respect of us citizens. The very least we can do is consider their qualifications, weigh their ideas, and then take the time to vote for those we believe are best.

There are more than 2,000 registered voters in Chelsea. I hope there will be more than 2,000 ballots cast on March 12.

## CRAZY - J'S CERAMICS

FEBRUARY SPECIAL:

Firing 40% of purchase price  
(with receipt)

Classes available days and evenings

Please call Joanne

at 426-4903 M - F, 9-5; Sat., 2-6



# smiles

They have a way of showing the true feelings we share for one another.

We believe funeral service should reflect these feelings of love.

**COLE-BURGHARDT**

FUNERAL CHAPEL

214 East Middle Street

Member The International Order Of The Golden Rule

## Tentative Events Told For Sesquicentennial

The tentative agenda for the final two days of the Chelsea Sesquicentennial celebration - June 30-July 4 has been set. The preliminary program for the first three days was announced last week.

Paul Bollinger will be chairman of Agriculture Day, July 3. Events will take place at the fairgrounds and will consist of a display of farm machinery, new and old, including steam engines and horse-powered equipment. Bollinger is also planning a plowing contest and a cross-cut wood sawing competition, and rides around the fairgrounds on horse-driven wagons.

Industry Day is also scheduled July 3, and Dave McAllister is the chairman. Events will include tours of Chelsea Milling, Book-Crafters and Chrysler Proving Grounds.

Veretta Whittaker, Pat Sober and Cindy Bradbury are chairing Ladies Day, also on July 3. They have tentatively planned a luncheon and fashion show, and are seeking help from any women's group interested in working on this project.

Climax of the Sesquicentennial will occur on the Fourth of July. Pat Merkel is the chairman of Independence Day, and has planned the traditional Legion barbecue and an ice cream social by the Knights of Columbus Auxiliary. A log-rolling contest will be held on the pond at the fairgrounds, and there will be a water ball contest among fire departments in the area.

During the week, there will be a show of "lost arts" at the fairgrounds. Included will be weaving, butter-making, tin-smithing and candle-dipping. Senior citizens will assist merchants in appropriate window displays.

On March 31, the "Burial of the Razor" will be held on the library grounds. This will be the signal for the men of the community to begin growing beards. Various organizations in the community

will be holding "wakes" during the afternoon hours.

Brothers of the Brush and Belles chapters will be forming soon. Any churches, factories, organizations and individuals are encouraged to form chapters and junior chapters of the Brothers and Belles. Chapter certificates will be available sometime in February at a community meeting.

Sesquicentennial T-shirts will be available for sale at Vogel's, which will carry children's sizes, and at Strieter's, which will have adult sizes.

For additional information or questions, contact Anne Merkel at 475-3272 after 5 p.m.

About 4.2 trillion gallons of rain and snow fall on the contiguous 48 states on a typical day.

## Those 'First Robins' Were Here All Winter

Last week's mild weather brought a flock of calls to The Standard to report sightings of "first robins."

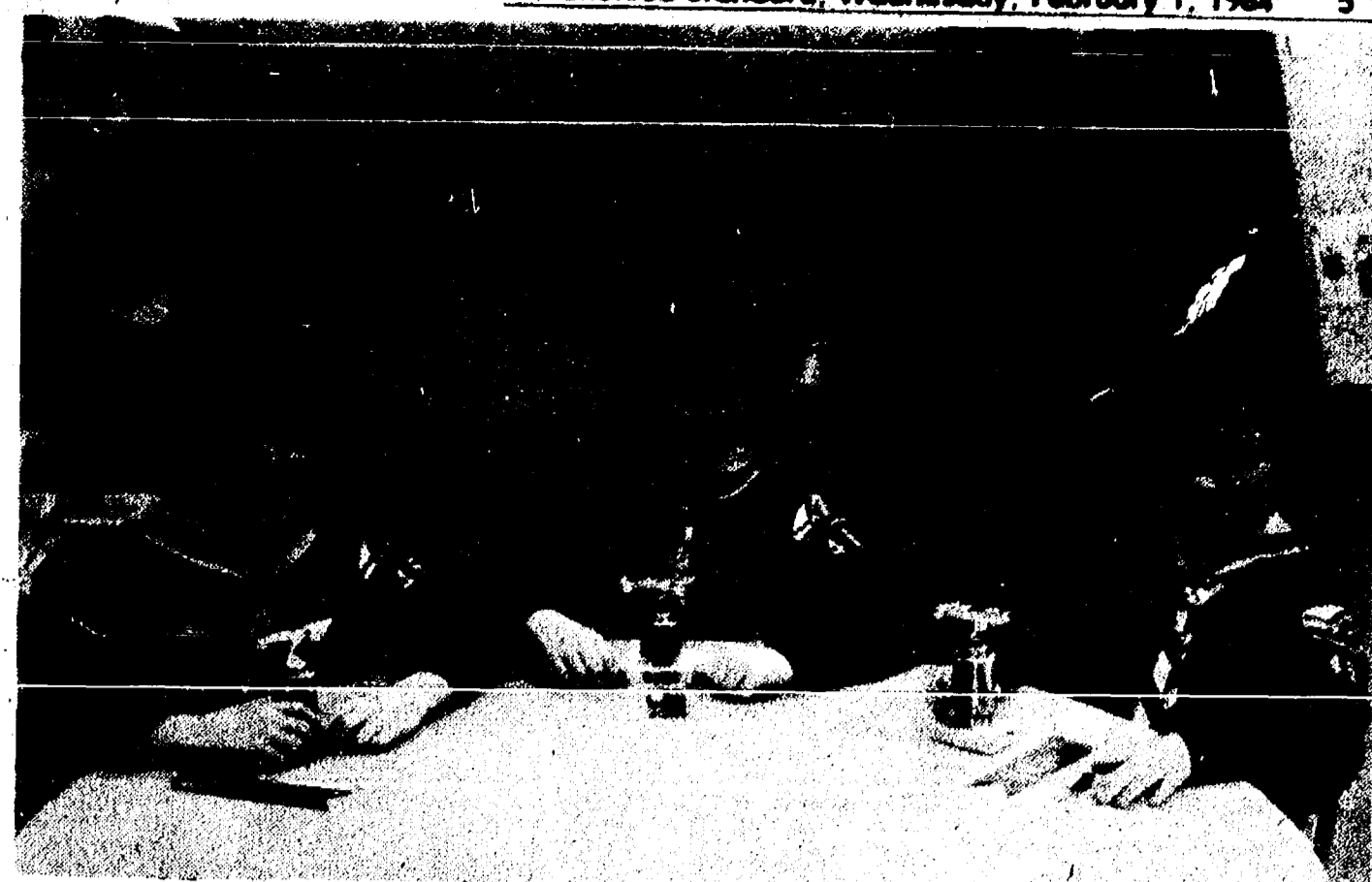
One caller, former postmaster Richard Schaules of 14450 Island Lake Rd., said he had "at least a dozen robins" at his backyard bird feeder. Other reports were of singles and pairs of robins.

Badly as people may want spring to come after this cold and harsh winter, the fact is that robins are not a reliable sign of the softer season's arrival.

The cold facts are that by no means all robins migrate south in the fall. Many of them stay around through the winter, retreating to dense woods where they find shelter and food.

A spell of mild weather will bring them out into more exposed areas, such as yards where bird-feeding stations are maintained. When it turns cold again, they go back to shelter to wait for spring, like the rest of us.

Migratory robins generally show up during the first 10 days of March. By that time the stay-at-home males may have staked out



PINEWOOD DERBY WINNERS: Brian Andress (below) placed first in the annual Pinewood Derby sponsored by Cub Scout Pack No. 455. In top photo are (left to right) Dirk Colby,

Paul Urbanek and David Burkel. Dirk and Paul were second and third in the competition and David won the prize for best design.

## Garage, Contents Destroyed in Fire With \$40,000 Loss

A fire in a pole barn-type garage on Joslin Lake Rd. last Wednesday evening did about \$40,000 worth of damage, Chelsea fire chief Paul Hankerd said.

The building and its contents, which consisted of stored farm equipment, were largely destroyed, Hankerd said. The machinery included a sprayer, a wagon and a planter.

The fire of undetermined origin broke out in the west end of the building and spread quickly.

Malcolm Reinhardt of Joslin Lake Rd. was listed as owner of the building and Laurence Noah of Werkner Rd. as owner of the machinery.

## Phillip Frame on Cooley Dean's List

Phillip Frame, son of William and Barbara Frame of 13880 McKinley Rd., has been named to the dean's list at Cooley Law School, where he is a second-year student.

He is a 1977 graduate of Chelsea High school and a 1981 graduate of Eastern Michigan University where he majored in business administration.

The Earth is covered with 326 million cubic miles of water—of which only 3 percent is fresh water.



## PHIL'S SERVICE

Philip C. Musolf, Owner-Operator

889 S. Main St., Chelsea

Ph. 475-3596

## COMPLETE AUTO SERVICE

- ★ Tune-Ups
- ★ Brakes
- ★ Shocks
- ★ Struts
- ★ Front End Repairs
- ★ Cooling System Repairs
- ★ Exhaust Systems
- ★ Engine & Transmission Replacement
- ★ Engine and Carburetor Repairs

Mon. thru Fri., 8 a.m. to 8 p.m. Sat., 8 a.m. to 5 p.m.

## Jiffy market

Big Enough To Serve You . . . Small Enough To Know You!

Corner of Sibley and Werkner Rds. - Chelsea, Michigan 48118

PHONE 475-1701

Sale Prices Good Feb. 1-5, 1984

Complete Fresh Meat Dept. - U.S.D.A. Choice Beef - The Finest of Fresh Pork

U. S. D. A.

**Round  
Steak**

Full \$1.98 lb.  
Cut



FRESH  
GROUND  
ALL-BEEF



**HAMBURGER**

lb. \$1.49

Hamburger you will enjoy!

YOUNG PORK - LEAN - TENDER

**Quartered Pork Loins**

1/4 PORK LOIN  
SLICED INTO  
9 to 11 CHOPS

\$1.59 lb.

ECKRICH  
ALL-BEEF  
**FRANKS**  
\$1.59 lb.

ECKRICH  
**SMOK-Y  
LINKS**  
10-OZ.  
PKG. \$1.39

ECKRICH  
**SMORGAS-PAC** - 1 lb.  
or  
**HAM SMORGAS-PAC**  
12 oz. \$1.99

Have A Coke  
& Smile  
**COCA-COLA**  
2-LITER BOTTLES  
Plus Deposit \$1.39

FARMLAND BULK-SLICED

**SLAB BACON**

Random  
Weights

lb. \$1.49

## FARM MAID SPECIALS

HOMOGENIZED

**MILK** . . . . . gal.

\$1.98

**Low-Fat  
MILK**  
gal. \$1.69

**SOUR  
CREAM** 99¢  
Pt.  
Cn.

**CHIP  
DIPS**  
8-Oz.  
Cn. 49¢

**COTTAGE  
CHEESE**  
1 lb.  
Cn. 99¢

**Orange  
Juice**  
1/2 gal. \$1.19

HOLSUM - KING SIZE

**WHITE BREAD**

24-Oz.  
1 lb., 8 oz.

**79¢**

FRESH MEATS - GROCERIES - PRODUCE - BEER - WINE - LIQUOR

Open 7 a.m. Morning to 6 p.m. Nights - 7 Days A Week

## Do you have rent or royalty income?

## H&R Block can make the new tax laws work for you.

105 S. MAIN

Open Monday through Saturday, 9-6. Phone 475-2752  
OPEN TODAY - APPOINTMENTS AVAILABLE

**H&R BLOCK®**  
THE INCOME TAX PEOPLE

## SUPER "LEVI'S" SALE

CORDUROY JEANS

Brown - Beige - Navy - Grey

**FLARE BOTTOM  
BLUE-JEANS**

Reg. \$22.00

**Now \$9.95**

LIMITED TIME ONLY

**Strieter's Men's Wear**  
Since 1914

1984	February	1984
S	M	T
1	2	3
4	5	6
7	8	9
10	11	12
13	14	15
16	17	18
19	20	21
22	23	24
25	26	27
28	29	30

# COMMUNITY CALENDAR

## Monday--

Chelsea Charms Baton Booster Club meeting Room No. 118, high school, Monday, Feb. 6 at 7:30. Members please bring any used baton items, modeling clothes or accessories for sale. 35-2

Parent-Teacher South meets the second Monday of each month in the South School Library at 15 p.m.

Lima Township Board meets the first Monday of each month. advx14tf

Chelsea Kiwanis Club meets every Monday, 6:30 p.m. at Chelsea Community Hospital.

Chelsea School Board meets the first and third Mondays of each month, 8 p.m., in the Board Room.

Chelsea Lioness, second Monday of each month at the Meeting Room in the Citizens Trust on M-52, Chelsea, at 7:30 p.m. Call 475-1791 for information.

Parents Anonymous Group, Chelsea, a self-help group for abusive or potentially abusive parents, Mondays, 7-9 p.m. Call 475-9176 for information.

Chelsea Recreation Council 7 p.m., 2nd Monday of the month, Village Council chambers. 35tf

## Tuesday--

Woman's Club of Chelsea, 8 p.m. second and fourth Tuesdays at McKune Memorial Library. For information call 475-2857.

American Business Women's Association 6:30 p.m. at the Chelsea Hospital fourth Tuesday of each month. Call 475-9244 for information.

Lima Township Planning Commission, third Tuesday of each month, 8 p.m., Lima Township Hall.

Chelsea Village Council, first and third Tuesdays of each month. advtf

Sylvan Township Board regular meetings, first Tuesday of each month, 7 p.m., Sylvan Township Hall, 112 W. Middle St. advtf

Lions Club, first and third Tuesday of every month, 6:45 p.m., at the K of C Hall. Ph. 475-2831 or write P.O. Box 121, Chelsea.

Chelsea Rebekah Lodge No. 130 meets the first and third Tuesday of each month, at 7:30 p.m.

Chelsea Jaycees, first Tuesday of each month. For more information call Wendall Wagner, 475-2571.

Chelsea Rod and Gun Club regular meeting, second Tuesday of each month at the clubhouse, Linsag Rd. 49tf

## Wednesday--

Chelsea Citizens Against Drugs, 7:30 p.m. Wednesday, Feb. 1, basement of Citizens Trust, Chelsea-Manchester Rd.

VFW Post 4076 meeting second Wednesday of month, 7:30 p.m., VFW Hall, 105 N. Main.

Chelsea Communications Club, fourth Wednesday of each month, 8 p.m., Chelsea Lanes basement meeting room.

New Beginning, Grief Group 1st, 3rd (5th) Wednesday each month, 7:30-9 p.m., Family Practice Center, 775 S. Main St., Chelsea.

Lima Dexter Extension, 10:30 a.m., Wednesday, Feb. 8 at home of Blythe Johnson, 115 S. Freer Rd., Chelsea. Hostesses are Phyllis Vallencourt and Blythe Johnson. Program conducted by Jane Schairer.

The Children's Center at Chelsea Community Hospital has openings in the following programs: (1) Infant-Toddler Program, ages 3 months to 2 1/2 years; (2) Pre-School Program, ages 2 1/2 years to 5 years; (3) Pre-Kindergarten Program, for the winter semester; (4) School-age Program. There is also a drop-in service available from 8:30 a.m. until 5:30 p.m. For further information contact Carla Van Den Eschert, Ann Teahan or Anne Daniels at 475-1311, ext. 405, or ext. 406. advx35

## Thursday--

ACATS-Assoc. for Creative and Academically Talented Students will meet Feb. 2, 7:30, LGI Room, Beach Middle school. Topic: Chelsea Schools Testing program. Everyone welcome.

Chelsea Community Farm Bureau, Thursday, Feb. 9, at home of Mr. and Mrs. Norman Hinderer, 7:30 p.m. Pot-luck.

Chelsea High School Class of 1964 is planning a 20-year reunion. A meeting will take place, Thursday, Feb. 2, at Jeanene Riemenschneider's at 7:30 p.m. For further information call days: Kay 475-1910, or eves: Jeanene 475-1469.

McKune Memorial Library will have a story hour for 3-5-year-olds each Thursday. Story hour will begin at 9:15 a.m. and end at 10 a.m. Cheryl Ford will be the storyteller.

Lyndon Township Planning Commission, 8:00 p.m. the second Thursday of each month. adv28tf

Knights of Columbus Women's Auxiliary, second Thursday of each month, 8 p.m. at K. of C. Hall, 20750 Old US-12.

Horse meeting Thursday, Feb. 2, 7 p.m. at Dexter Mill. For further information call 426-4621.

## Friday--

Senior Citizens meet third Friday of every month, pot-luck dinner, games and cards. 6 p.m. at Senior Citizen Activities Center at North School.

Rogers Corners Farm Bureau group, Friday, Feb. 10 at 8 p.m. at home of Edwin and Amanda Horning.

## Saturday--

Community card party first Saturday of each month, 7:30 p.m., North school cafeteria. \$1.50 per person. Cash prizes, refreshments. Sponsored by Chelsea Senior Citizens. Everyone welcome.

## Misc. Notices--

North Lake Co-Op Nursery school is taking enrollments for the 1983-84 school year for 3- and 4-year-old sessions. We offer classroom assisting and two options for non-assisting. For further information call Nancy Muntange, 475-1080. adv15tf

Chelsea Co-op Nursery is accepting applications for the 1983-84 school year. Three, four, and some late-birthday five-year-olds are eligible. Classroom assist and non-assist programs are available. Please call Karen at 475-7161 or Janet at 475-9370 for information. xadv24tf

Faith in Action: hours, 9-4, Monday through Friday. Call 475-3305. Services provided: food, clothing, limited financial assistance.

Faith in Action provides food, clothing and limited financial assistance based on need, as well as other services. The House is located behind the Chelsea Hospital or call 475-3305.

Home Meals Service, Chelsea. Meals served daily to elderly or disabled. Cost per meal, \$2.25 for those able to pay. Interested parties call Ann Feeney, 475-1493.

Chelsea Social Service, 475-1581, 2nd floor of Village Offices. Thursdays, 10 to 4, or if an emergency need at other times, call Linda at 475-7405 or Jackie at 475-1925.

Sexual assault counseling for victim, family, friend. Assault Crisis Center, 40009 Washtenaw, Ann Arbor, 994-1616, no charge.

Please Notify Us In Advance of Any Change in Address

**PERM SPECIAL**

**\$25.00** including haircut

Good thru February

**CHILDREN'S HAIRCUTS PRICED EQUIVALENT TO AGE**

AGE	PRICE
2 YRS.	\$2
3 YRS.	\$3
4 YRS.	\$4
5 YRS.	\$5
6 YRS.	\$6
7 YRS.	\$7
8 YRS.	\$8
9 YRS.	\$9
UP TO 10 YRS	\$10

**EAR PIERCING \$7.00**

Req. \$10.00 (Includes Earrings)

**OPEN EVENINGS By Appt.**

**HIS-N-HER IMAGES**

8066 Main St. Dexter 426-8878

**MORTGAGE SALE--Default** having been made in the terms and conditions of a certain mortgage made by MATTIE ODESSA SMITH of Washtenaw County, Michigan, Mortgagee, to Commercial Mortgage Corporation, a Michigan Corporation, Mortgagee, dated the 12th day of May, 1981, and recorded in the office of the Register of Deeds for the County of Washtenaw and State of Michigan, on the 13th day of May, 1981, in Liber 1800 of Washtenaw County Records, on page 821, which said mortgage was thereafter assigned to Alta Kinsman or Donald E. Kinsman, WFROS, 311 W. Board Linden, Michigan 48401 by assignment date 19th of July, 1981, and recorded July 21, 1981 in the office of the Register of Deeds for said County of Washtenaw on Liber 1809 of Washtenaw County Records on page 356, on which mortgage there is claimed to be due, at the date of this notice, for principal and interest, the sum of \$23,824.59.

And no suit or proceedings at law or in equity having been instituted to recover the debt secured by said mortgage or any part thereof. Now, therefore, by virtue of the power of sale contained in said mortgage, and pursuant to the statute of the State of Michigan in such case made and provided, notice is hereby given that on Thursday, the 1st day of March, 1984, at 10:00 o'clock A.M., Local Time, said mortgage will be foreclosed by a sale at public auction, to the highest bidder, at the western entrance to the County Building in Ann Arbor, Michigan (that being the building where the Circuit Court for the County of Washtenaw is held), of the premises described in said mortgage, or so much thereof as may be necessary to pay the amount due, as aforesaid, on said mortgage, with the interest thereon at fourteen and 1/2 percent (14 1/2%) per annum and all legal costs, charges and expenses, including attorney fees allowed by law, and also any sum or sums which may be paid by the undersigned, necessary to protect its interest in the premises. Which said premises are described as follows:

All that certain piece or parcel of land situated in the Twp. of Ypsilanti in the County of Washtenaw, State of Michigan, and described as follows, to-wit:

Lot 475, WESTWILLow UNIT 5, as recorded in Liber 13 of Plats, Pages 22 and 23, Washtenaw County Records.

During the six months immediately following the sale, the property may be redeemed. Dated at Southfield, Michigan, January 4, 1984.

**ALTA KINSMAN or DONALD E. KINSMAN**  
Assignees of Mortgage  
E. MARIA KEYS, Representative for  
DIAMOND MORTGAGE CORPORATION  
Servicing Corporation for Commerce  
Mortgage Corporation  
22077 Greenfield, Ste. 104  
Southfield, Michigan 48075  
Jan 18-25 Feb 1-15

**MORTGAGE SALE -- Default** having been made in the terms and conditions of a certain mortgage made by THOMAS J. HOGARTH, a single man, Mortgagee, to Standard Federal Savings and Loan Association, a Michigan Corporation, Mortgagee, dated September 11, 1978, and recorded in the office of the Register of Deeds for the County of Washtenaw and State of Michigan, on September 26, 1978, in Liber 1874, on Page 457, of which said mortgage, on which mortgage there is claimed to be due, at the date of this notice, for principal and interest, the sum of Forty-Six Thousand, Five Hundred Seventy and 13/100 Dollars (\$46,517.13).

And no suit or proceedings at law or in equity having been instituted to recover the debt secured by said mortgage or any part thereof. Now, therefore, by virtue of the power of sale contained in said mortgage, and pursuant to the statute of the State of Michigan in such case made and provided, notice is hereby given that on Thursday, February 23, 1984, at ten o'clock A.M., local time, said mortgage will be foreclosed by a sale at public auction, to the highest bidder, at the western entrance to the County Building in Ann Arbor, Michigan (that being the building where the Circuit Court for the County of Washtenaw is held), of the premises described in said mortgage, or so much thereof as may be necessary to pay the amount due, as aforesaid, on said mortgage, with the interest thereon at Nine and Three-Quarters percent (9 3/4%) per annum and all legal costs, charges and expenses, including attorney fees allowed by law, and also any sum or sums which may be paid by the undersigned, necessary to protect its interest in the premises, which said premises are described as follows:

All that certain piece or parcel of land situated in the Township of Northfield in the County of Washtenaw, State of Michigan, and described as follows:

That part of the Northeast 1/4 of Section 17, Town 1 South, Range 6 East, Northfield Township, Washtenaw County, Michigan; described as beginning at a point distant North 89° 22' 00" West along the North and South 1/4 line of Section 17, 1315.51 feet and North 89° 50' 00" East along the centerline of Six Mile Road, 1084.40 feet from the Center Post of said Section 17 and proceeding thence North 89° 50' 00" East along the centerline of Six Mile Road, 1084.40 feet; thence South 89° 18' 30" East 857.34 feet; thence South 89° 48' 40" West 329.87 feet; thence North 0° 22' 00" West 59.12 feet; thence North 89° 50' 00" West 318.17 feet; thence North 89° 50' 00" East 121.84 feet; thence North 0° 22' 00" West 132.12 feet; thence North 74° 41' 01" East 48.24 feet; thence North 25° 18' 58" East 31.50 feet; thence North 0° 22' 39" West 96.54 feet; thence North 0° 22' 00" West 33.00 to the point of beginning.

During the Twelve months immediately following the sale, the property may be redeemed. Dated at Troy, Michigan, November 30, 1983.

**STANDARD FEDERAL SAVINGS AND LOAN ASSOCIATION,**  
a federal association  
Mortgage  
RONALD J. PALMER  
Attorney for Mortgagee  
2401 West Big Beaver Road  
Troy, Michigan 48064  
Jan 11-18-25 Feb 1-8

**MORTGAGE SALE**  
Default having been made in the terms and conditions of a certain mortgage made by PERI and PAT J. GAGALIS, husband and wife, of Ann Arbor, Michigan, to Great Lakes Federal Savings & Loan Association, of the City of Ann Arbor, Washtenaw County, Michigan, a corporation organized under the Home Owners' Loan Act of 1933, of the United States of America, as amended, Mortgagee, dated the 18th day of September, 1980, and recorded in the office of the Register of Deeds for the County of Washtenaw and State of Michigan, on the 19th day of September, 1980, in Liber 1812 of Washtenaw County Records, on page 685, on which mortgage there is claimed to be due, at the date of this notice, for principal and interest, the sum of One Hundred Seventy-Eight Thousand One Hundred Eighty and 00/100 (\$178,180.00) dollars, and an arrearage in the sum of Ten Thousand Six Hundred Ninety Six and 99/100 (\$10,696.99) dollars.

And no suit or proceedings at law or in equity having been instituted to recover the debt secured by said mortgage or any part thereof. Now, therefore, by virtue of the power of sale contained in said mortgage, and pursuant to the statute of the State of Michigan in such case made and provided, notice is hereby given that on Thursday, the 23rd day of February, 1984, at 10 o'clock A.M., Local Time, said mortgage will be foreclosed by a sale at public auction, to the highest bidder, at the western entrance to the County Building in Ann Arbor, Michigan (that being the building where the Circuit Court for the County of Washtenaw is held), of the premises described in said mortgage, or so much thereof as may be necessary to pay the amount due, as aforesaid, on said mortgage, with the interest thereon at Twelve and 1/2 percent (12 1/2%) per annum and all legal costs, charges and expenses, including attorney fees allowed by law, and also any sum or sums which may be paid by the undersigned, necessary to protect its interest in the premises.

Said premises are situated in the Township of Lodi, County of Washtenaw, State of Michigan and described as:

Beginning at the north 1/4 corner of Section 8, T3S, R10E, Lot 1st day of Washtenaw County, Michigan; thence N 88° 49' 05" E 730.00 feet along the north line of said Section and the centerline of Scio Church Road; thence S 00° 49' 00" E 703.99 feet; thence S 88° 49' 05" E 730.00 feet; thence S 88° 49' 05" E 730.00 feet; thence N 00° 30' 40" W 528.00 feet along the north and south 1/4 line of said Section to the Point of Beginning. Being a part of the west 1/2 of the Northeast 1/4 of Section 3, T3S, R10E, Lot 1st day of Washtenaw County, Michigan, having the use of an easement for the installation and maintenance of tile fields over a 70 foot wide strip of land having a north line described as follows: Commencing at the north 1/4 corner of Section 3; thence S 88° 49' 05" E 730.00 feet along the north line of said Section and the centerline of Scio Church Road; thence S 00° 49' 00" E 703.99 feet to the POINT OF BEGINNING; thence S 88° 49' 05" W 297.00 feet to the Point of Termination.

During the six months immediately following the sale, the property may be redeemed. Dated at Ann Arbor, Michigan, January 16, 1984.

**GREAT LAKES FEDERAL SAVINGS & LOAN ASSOCIATION,**  
Mortgage  
LAIRD & CHIN, By: Sheila Schwartz  
Attorneys for Mortgagee  
401 Lakes Federal Savings Bldg.  
401 E. Liberty Street  
Ann Arbor, Michigan 48104  
Jan 25-Feb 1-15-22

**MORTGAGE SALE -- Default** having been made in the terms and conditions of a certain mortgage made by LUCAS DE VRIES and MARY DE VRIES, his wife, to Standard Federal Savings and Loan Association, a federal association, of Troy, Oakland County, Michigan, formerly Wayne Federal Savings and Loan Association, Mortgagee, dated November 1, 1973, and recorded in the office of the Register of Deeds for the County of Washtenaw and State of Michigan, on November 14, 1973, in Liber 1461, on Page 389, of Washtenaw County Records, on which mortgage there is claimed to be due, at the date of this notice, for principal and interest, the sum of Forty-Six Thousand, Five Hundred Seventy and 13/100 Dollars (\$46,517.13).

And no suit or proceedings at law or in equity having been instituted to recover the debt secured by said mortgage or any part thereof. Now, therefore, by virtue of the power of sale contained in said mortgage, and pursuant to the statute of the State of Michigan in such case made and provided, notice is hereby given that on Thursday, February 23, 1984, at ten o'clock A.M., local time, said mortgage will be foreclosed by a sale at public auction, to the highest bidder, at the western entrance to the County Building in Ann Arbor, Michigan (that being the building where the Circuit Court for the County of Washtenaw is held), of the premises described in said mortgage, or so much thereof as may be necessary to pay the amount due, as aforesaid, on said mortgage, with the interest thereon at Eight and One-Half percent (8 1/2%) per annum and all legal costs, charges and expenses, including attorney fees allowed by law, and also any sum or sums which may be paid by the undersigned, necessary to protect its interest in the premises, which said premises are described as follows:

All that certain piece or parcel of land situated in the Township of Freedom in the County of Washtenaw, State of Michigan, and described as follows:

Beginning in the N. and S. 1/4 line of section 12, T. 3. S. R. 4. E., on the N. bank of a ditch and at a point 14 chains and 14 links of the 1/4 post between sections 1 and 12 and running N. 14 chains and 14 links to said 1/4 stake; thence E. on the line between sections 1 and 12, seventeen chains, 7 links to the N. W. side of the aforesaid ditch; thence S. 48 deg. 45' W. along the N. W. bank of the ditch to the PLACE OF BEGINNING, being a part of the N. W. 1/4 of the N. E. 1/4 of section 12, T. 3. S. R. 4. E., Freedom Township, Washtenaw County, Michigan.

During the Twelve months immediately following the sale, the property may be redeemed. Dated at Troy, Michigan, October 30, 1983.

**STANDARD FEDERAL SAVINGS AND LOAN ASSOCIATION,**  
a federal association  
Mortgage  
RONALD J. PALMER  
Attorney for Mortgagee  
2401 West Big Beaver Road  
Troy, Michigan 48064  
Jan 11-18-25 Feb 1-8

**MORTGAGE SALE--Default** having been made in the terms and conditions of a certain mortgage made by JAMES G. TANCEUSZ a/k/a GREGORY TANCEUSZ, a single man, and ADAM J. TANCEUSZ, a single man of Ypsilanti, Washtenaw County, Michigan, Mortgagees, to Michigan National Bank-Ann Arbor, Ann Arbor, Michigan, Mortgagee, dated the 4th day of September, 1980, and recorded in the office of the Register of Deeds for the County of Washtenaw and State of Michigan, on the 28th day of October, 1980, in Liber 1779 of Washtenaw County Records, on page 41, and recorded August 20, 1981 in Liber 1812 of Washtenaw County Records, on Page 685, on which mortgage there is claimed to be due, at the date of this notice, for principal and interest, the sum of Fifteen Thousand Nine Hundred Eighty Six and 87/100 (\$15,986.87) Dollars.

And no suit or proceedings at law or in equity have been instituted to recover the debt secured by said mortgage or any part thereof. Now, therefore, by virtue of the power of sale contained in said mortgage, and pursuant to the statute of the State of Michigan in such case made and provided, notice is hereby given that on Thursday, the 23rd day of February, 1984, at 10 o'clock A.M., Local Time, said mortgage will be foreclosed by a sale at public auction, to the highest bidder, at the western entrance to the County Building in Ann Arbor, Michigan (that being the building where the Circuit Court for the County of Washtenaw is held), of the premises described in said mortgage, or so much thereof as may be necessary to pay the amount due, as aforesaid, on said mortgage, with the interest thereon at fifteen percent (15%) per annum and all legal costs, charges and expenses, including attorney fees allowed by law, and also any sum or sums which may be paid by the undersigned, necessary to protect its interest in the premises. Which said premises are described as follows:

All of that certain piece or parcel of land situated in the Township of Ypsilanti in the County of Washtenaw, State of Michigan, and described as follows, to-wit:

Commencing at the Southwest corner of Section 32, Town 3 South, Range 7 East; thence East 286 feet; thence North 810 feet; thence West 268 feet; thence South 810 feet to the Place of Beginning, being in the West 1/2 of the Southwest 1/4 Section 32, Ypsilanti Township, Washtenaw County, Michigan.

During the six months immediately following the sale, the property may be redeemed. Dated at Clawson, Michigan, January 11, 1984.

**MICHIGAN NATIONAL BANK --**  
Ann Arbor  
Ann Arbor Michigan  
Mortgage  
DANIEL B. BARON  
1400 West 14 Mile Road  
Clawson, Michigan 48017  
Attorney for Mortgagee  
Jan 11-18-25 Feb 1-8

**MORTGAGE SALE--Default** having been made in the terms and conditions of a certain mortgage made by AYESHA NADIRAH RASHIED, formerly known as FRANKIE J. SHOWS of Ann Arbor, Michigan, Mortgagee, to Michigan National Bank-Ann Arbor, a National Banking Association, Mortgagee, dated the 9th day of February, 1981, and recorded in the office of the Register of Deeds for the County of Washtenaw and State of Michigan, on the 6th day of March, 1981, in Liber 1793 of Washtenaw County Records, on page 41, on which mortgage there is claimed to be due, at the date of this notice, for principal and interest, the sum of Nine Thousand Seven Hundred Thirty Seven and 84/100 Dollars (\$9,737.84).

And no suit or proceedings at law or in equity have been instituted to recover the debt secured by said mortgage or any part thereof. Now, therefore, by virtue of the power of sale contained in said mortgage, and pursuant to the statute of the State of Michigan in such case made and provided, notice is hereby given that on Thursday, the 9th day of February, 1984, at 10:00 o'clock A.M., Local Time, said mortgage will be foreclosed by a sale at public auction, to the highest bidder, at the western entrance to the County Building in Ann Arbor, Michigan (that being the building where the Circuit Court for the County of Washtenaw is held), of the premises described in said mortgage, or so much thereof as may be necessary to pay the amount due, as aforesaid, on said mortgage, with the interest thereon at seventeen percent (17%) per annum and all legal costs, charges and expenses, including the attorney fees allowed by law, and also any sum or sums which may be paid by the undersigned, necessary to protect its interest in the premises, which said premises are described as follows:

All of that certain piece or parcel of land situated in the City of Ann Arbor in the County of Washtenaw, State of Michigan, and described as follows, to-wit:

Lot 18, Colonial Village, as recorded in Liber 17 of Plats, pages 16 and 17, Washtenaw County Records.

Parcel II

A part of Lot 17, Colonial Village, as recorded in Liber 17 of Plats, pages 16 and 17, Washtenaw County Records, said part being more particularly described as: Beginning at the NW corner of said Lot 17; thence Ely along the N line of said Lot 17, a distance 70 feet; thence to the S line of said Lot 17; thence N to the SW corner of said Lot 17; thence W to the place of beginning.

During the six months immediately following the sale, the property may be redeemed. Dated at Clawson, Michigan, December 28, 1983.

**MICHIGAN NATIONAL BANK--**  
ANN ARBOR  
ANN ARBOR MI. Mortgage  
KURT R. VILJOEN  
1400 W. Fourteen Mile Road  
Clawson, MI 48017  
Jan 4-11-18-25 Feb 1

A daughter, Jessica Lea, Friday, Jan. 27, to Rod and Tammy Sweeny of Grass Lake. Maternal grandfather is Arthur Starr of Pinckney. Maternal grandmother is Marilyn Charboneau of Pinckney. Paternal grandfather is Frank and Nancy Sweeny of Chelsea. Joshua, age 20 months, is the brother of Jessica.

A son, Nicolas Clark, Thursday, Jan. 26, to Scott and Cynthia Strudger of Dexter. Maternal grandparents are Mr. and Mrs. James Bradbury of Dexter. Paternal grandfather is Walter Strudger of Rush Lake and grandmother is Margaret Strudger of Howell. Daniel, age 3 is the brother of Nicolas.

A son, Christopher Richard, Jan. 20, to Carol and John Strahler, 203 Lincoln St. Maternal grandparents are Gertrude and Frank Potozki of Chelsea. Paternal grandfather is Ann Strahler of Pittsburgh, Pa. Christopher has a brother Eric, 2 1/2 years old.

A daughter, Emily Marie, Jan. 18 at St. Joseph Mercy Hospital, Ann Arbor, to James and Joyce Lindstrom of 9820 Waterloo-Munith Rd., Grass Lake. Paternal grandparents are Joe and Dorothy Lindstrom of Waterloo. Maternal grandparents are Philip and Rose McGibney of Chelsea. Emily has a sister, Jayne Lynn.

A daughter, Karrie Louise, Jan. 17, at St. Joseph Mercy Hospital, Ann Arbor, to Linda and Tony Hafner, Chelsea. Maternal grandparents are Peg and Walter Hamilton, Jr., Chelsea. Paternal grandparents are Elaine and Charles Hafner, Chelsea. Great-grandmothers are Clara Ferry, Harrison, and Mary Crockett, Chelsea. Great-grandfathers are Robert Landis, Waynetown, Ind. and Walter Hamilton, Sr., Fla.

A daughter, Audri Rose, Thursday, Jan. 5, to Mark and Denise Houle of Munith. Maternal grandparents are Joyce and James Campbell of Stockbridge. Paternal grandparents are Mary Houle of Chelsea and the late Raymond Houle. Maternal grandmother is Evelyn Gyurkovitz of Michigan Center. Paternal great-grandmother is Mrs. Lillian Houle of Chelsea. Audri has one sister, Kari Denise, 8 and one brother, Kevin David, 10.

A daughter, Kari Elizabeth, Dec. 17 at St. Joseph Mercy Hospital, Ann Arbor, to Thomas Richard and Debra Ann Ceo of 13702 Aberdeen Dr., Gregory.

**MARGIE'S UPHOLSTERY**

FREE ESTIMATES

- Large Selection of Materials
- Upholstery Supplies
- Repair Service

Pick-Up and Delivery Available

MARJORIE SMITH

Ph. 1 (517) 536-4230

Call Collect between 8 a.m.-6 p.m. Monday thru Saturday

6245 Brooklyn Rd., Napoleon

**Palmer**

**MICHIGAN'S OLDEST FORD DEALER**

**\$115.00\***

**1984 ESCORT FRONT WHEEL DRIVE HATCHBACK**

Purchase plan 48 month lease, total of payments \$5580.40 with approved credit. Customer pays first month's payments and \$125 refundable security deposit on delivery.

**Palmer**

**FALS**

FOR ADJUSTED LEASING SYSTEM

OPEN: Mon., Tues., Thurs. 'til 9 p.m., Sat. 'til 1 p.m.  
In Washtenaw County since April 15, 1912

**CHELSEA 475-1301**

**THE CAPTAIN'S TABLE**

**FINE FOODS AND COCKTAILS**

Join Us for Our Daily  
**LUNCHEON AND EVENING SPECIALS**

HOURS: Monday thru Saturday . . . 7 a.m. to 9 p.m.

8093 Main St. Dexter 426-3811

**Juke Box Rentals**

for:

- ★ REUNIONS
- ★ RECEPTIONS
- ★ PARTIES

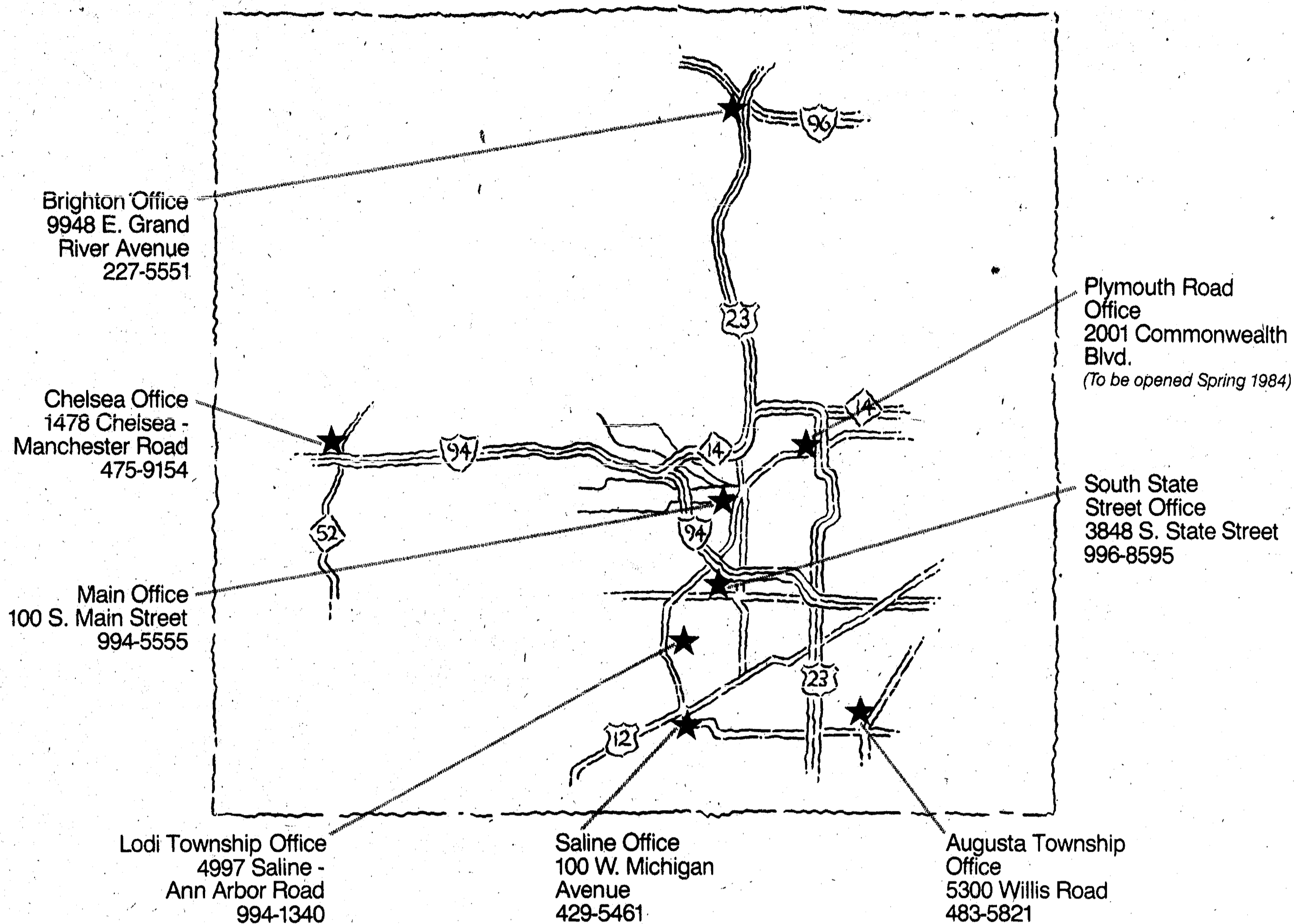
. . . every special event

**Zemke**

Operated Machines

**(313) 662-1771**

Ours is definitely a marriage of convenience.



# We didn't just get bigger. We got better.

The merger of Ann Arbor Trust and Citizens Bank of Saline has resulted in a number of benefits, not the least of which is being closer to you.

Citizens Trust has seven convenient offices in Washtenaw and Livingston Counties: two in Ann Arbor, one each in Brighton and Chelsea,

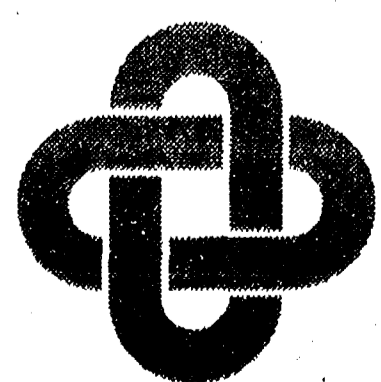
and three in Saline and surrounding townships. That's seven *full-service* offices where you can apply for a loan. Open an account. Or discuss your other financial requirements.

And in addition to convenient locations, all our offices are staffed by courteous professionals

dedicated to making banking a pleasure.

Check the map above for the address and phone-number of the Citizens Trust office nearest you. And please note: We'll soon be opening an eighth office in Plymouth Park near Green Road on the north side of Ann Arbor.

**Ann Arbor Trust and Citizens Bank of Saline have tied the knot.**



## CitizenTrust

Downtown Ann Arbor • Augusta Township • Brighton • Chelsea • Lodi Township • Saline • S. State St., Ann Arbor

MEMBER FDIC



## From the SUPERINTENDENT'S DESK

By Raymond E. Van Meer  
Superintendent of Schools

### ★ Strengthening Instruction Skills . . .

Ten teachers and administrators from the Chelsea School District recently had the opportunity to be involved in instructional skills workshops. Chelsea, Dexter, Manchester and Whitmore Lake school districts co-operatively hired consultant Dennis Sparks, and each district sends 10 participants to the workshops. The workshops center on the four elements of instruction: selecting the objective near the current level of difficulty, teaching to the objective, monitoring learning and making adjustments in teaching, and using principles of learning—motivation, retention, application, participation and reinforcement.

The Chelsea Board of Education is very pleased with the reports from teachers and administrators who have taken part in the first five workshops. The workshops started with a two-day session in August. Three more days of instruction came in September, October and November. The Board of Education has committed further expenditures to allow two more sessions of training during the latter part of the 1983-84 school year. The second sessions were scheduled to begin Friday and Saturday, Jan. 20-21. At the end of this school year, approximately 30 teacher and administrators will have been given training techniques.

Teachers and administrators who have participated in the first phase have indicated with over-

whelming response that it is the best workshop geared to teaching that they have ever encountered. I am personally pleased with the motivation of teachers. The Chelsea schools are fortunate to have many master teachers. To be thought of as being good, and having the willingness to become better, is a fine testimonial to the teaching staff. I am also pleased that the Board of Education has committed the district to placing further emphasis on teachers and administrators attending these workshops.

In the past six years there has been a strong emphasis on curriculum co-ordination in the schools. Curriculum guides have been established and grade level procedures have been identified. This was necessary and certainly has been beneficial to our curriculum direction. However, what happens in the classroom is crucial to good learning. I am very excited about the enthusiasm generated by staff members who have taken part in the training sessions. To be more effective in the classroom means greater opportunities for learning for all students. Instructional skills training may be the most significant thing that has happened to this school system in many years. The Board of Education has indicated that we will be placing a high priority on instructional skills training for the next few years for all our staff members.

## South School Fun Fair Scheduled Feb. 4

South Elementary school's annual fun fair will be held from 11 a.m. to 4 p.m. Saturday, Feb. 4. The event is the annual major fund-raiser for the new equipment at the school.

There will be games for everyone from kindergarten age on up through adults, with prizes for all. Included will be a cake walk, a fun house, and a clown make-up booth.

Prizes will include a set of prints from the Dale Fisher Gallery, a bicycle, stuffed toys, jigsaws, a trouble light, a watch, an eight-track tape player, and gift certificates from area merchants.

New this year will be demonstrations and sales of basket and loom weaving and other heritage crafts.

The "Hamburglar" from McDonald's will be on hand, as will representatives of the Chelsea police and fire departments, a dentist, a nutritionist and members of the Lions Club conducting eye tests.

Lunches and snacks will be available, and there will also be a bake sale.

Proceeds from past South school fun fairs have bought bleachers, carpeting, playground equipment, kitchen sets for kindergarten classes, and a computer.



LEADER OF THE PACK: Sylvester Wojciecki, principal of South school, has taken up cross-country skiing, and he obviously has a lot

of support from pupils who follow him around during recess hours. The popular principal will retire at the end of this school year.

## First Round Completed In Cribbage Tourney

David Kruse led the annual Chelsea cribbage tournament after the first round of preliminary play with an 8-2 mark. Gini Boyer, Ray Dotts and Glenn Boyer were in a three-way tie for second place at 7-3.

The tournament is being played at the VFW Hall, 105 N. Main St. There are 22 entrants.

After three rounds of preliminary play—a total of 30 games—the top eight winners will compete in the final round for four prizes. Ties for the last qualifying spots in the finals will be broken, if necessary, on the basis of

points scored in losing games. Results after the first night of play:

	W.	L.
David Kruse	8	2
Gini Boyer	7	3
Ray Dotts	7	3
Glenn Boyer	7	3
Glenn Schleicher	6	4
Elmer Vasas	6	4
Ginny Wheaton	6	4
Wally Buss	6	4
Duane Boyer	6	4
Rheta Collins	5	5
Richard Dotts	5	5
Al Schaffer	5	5
Skip Schlup	5	5
Harriette Haight	5	5
Fremont Boyer	4	6
Norman Allen	4	6
Tom Haight	4	6
David Brennan	4	6
Jo Anderson	3	7
Mary Vasas	3	7
Jim Hoffmeyer	3	7
Tom Winans	1	9

## Cleary's Livingston Campus Booming

For the first time in its four-year history, enrollment at Cleary's Livingston campus has risen above that of its sister campus in Ypsilanti. With a total winter term enrollment of 465 students, Livingston's expanding student population exceeds Ypsilanti's total enrollment of 464 by one student.

Enrollment at Cleary-Livingston rose 11 percent over the winter 1983 figure of 418. This continues the trend of rapidly rising enrollments at the campus since it opened in 1979. Credit-hour totals came to 3,733; showing a 12 percent increase over last winter's 3,324.

A new building was dedicated last fall at the Livingston campus, to accommodate the increasing number of students. The building tripled the overall size of the facility, and includes medical, data processing, and word processing laboratories, as well as classrooms, student service offices, and lounges. A new library, which greatly expands the available library space at the campus, is also included in the structure.

## Rep. Gary Owen Will Speak at WCC on Feb. 3

Gary Owen, Speaker of the Michigan House of Representatives, will go to Washtenaw Community College Friday, Feb. 3, to talk with students at the College and other constituents. The public is welcome to attend. From 10 to 11 a.m. Representative Owen will answer students' and the public's questions in the College Theatre, Room LA 1, of the Liberal Arts and Science Building. A reception in the Board Room (second floor of the Student Center Building) at 11:30 will close his day at WCC.

BARBARA M. WEHR, D.D.S.  
JOHN C. WEHR, D.D.S.  
FAMILY DENTISTRY

9477 N. Territorial, Dexter  
In North Territorial Family Clinic  
426-4635

Monday-Friday, 9 a.m.-5 p.m.  
Evening & Saturday appointments available

## CATS

CHELSEA AREA  
TRANSPORTATION  
SYSTEM

Transportation for the Senior Citizen  
65 years & older, & the Handicapped.

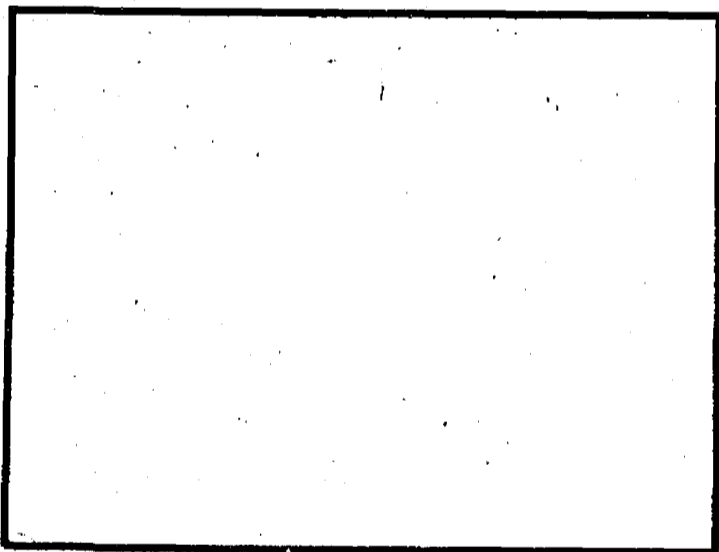
Advance reservations are required. For morning transportation call the preceding afternoon between 1 p.m. and 3 p.m. For afternoon transportation call in the morning from 9 a.m. to 11 a.m.

CALL 475-9494

between 9-11 a.m. or 1-3 p.m., Mon. thru Fri.

Service hours are 9 a.m. to 4:30 p.m. daily, Sat., 9-12.

## IS YOUR WALL A BLANK?



## COME TO OUR WALLCOVERING SALE AND SAVE 30% - 35%

Thybonny turns nothing walls into something special. Let our collection of sale books show you how to do it at savings. Over 100 books including Thomas Strahan, J. Josephson, Hatema, James Seaman, Benchmark, Kingfisher, Thibaut, Raintree, Pervel, Ultima, Dura, Mohr, Wall-Tex, Imperial, Sellers-Josephson, York, Thybonny. Sale orders must be placed before noon, Feb. 20. Come look us over now.

*Merkel*

HOME FURNISHINGS  
PHONE 475-8621

Use your Visa or Mastercard

Merkel's will be closed for inventory, Feb. 1, 1984.

## Clearance

## SALE

LADIES  
WINTER  
SLEEPWEAR  
AND SELECTED  
SWEATERS  
30% OFF

MEN'S and LADIES  
WOOLRICH  
PARKAS  
20% OFF

CLOSE-OUT on SELECTED  
TABLE  
LINENS  
BATH  
TOWELS  
30% OFF

HATS and  
MITTENS  
20% Off

50% Off  
LEG  
WARMERS

WINTER SPORTSWEAR  
UP TO 40% OFF

CHILDREN'S  
HEALTH-TEX  
UP TO 50% Off

CHILDREN'S  
OUTERWEAR  
25% OFF

ALL SPORTCOATS  
and BLAZERS 20% Off

ARROW  
LONG-  
SLEEVED  
DRESS  
SHIRTS  
20% OFF

LONG-SLEEVED SHIRTS:  
KNITS, RUGBYS, VELOURS,  
TURTLENECKS, ACRYLICS  
CUT'N SEWN, FLANNELS  
25% OFF

PANTS: OPEN-END POLY,  
WOOL BLEND, TRI-BLEND, CORDUROY  
20% OFF

BOYS' AND MEN'S  
CORDUROY  
JEANS  
20% OFF

WINTER  
OUTERWEAR  
20% OFF

30% OFF BOYS' AND MEN'S  
SWEATERS

ALTERATIONS  
ON SALE ITEMS  
AT COST

WHILE SUPPLY LASTS

MOON 25%  
BOOTS OFF

FLANNEL

PAJAMAS  
25% OFF

OSHKOSH  
WINTERWEAR  
25% OFF

CHILDREN'S  
SWEATERS  
30% OFF

OPEN MONDAY EVENINGS UNTIL 8:30 FOR YOUR SHOPPING CONVENIENCE.

## VOGEL'S & FOSTER'S

# Chelsea American Legion

# WINTER CARNIVAL

**Fri., Sat. & Sun., Feb. 3-4-5**  
**Cavanaugh Lake**  
**EUCHRE TOURNAMENT**  
 Friday, Saturday 7:30 p.m.  
 \$2.00 entry fee  
**PRIZES**  
**FREE CONCERT**  
 Sunday, 2 p.m.  
 Tom Murray and Friends  
**FISHING DERBY**  
 Sat. & Sun.  
 Prizes awarded at 5 p.m. Sunday

## Straub 'Confident' Chelsea To Keep Its Courtroom

"I'm confident that Chelsea will keep its 14th District courtroom," Commissioner Martin L. Straub of Dexter township said following his reappointment to the county board's special "space needs" committee.

Straub, who represents west Washtenaw county interests on the Board of Commissioners along with George Merkel of Chelsea, will serve on the committee together with Meri Lou Murray of Ann Arbor and Mary Egnor of Ypsilanti. Egnor has been re-elected chair of the board for an unprecedented third term. Murray is vice-chair.

"The proposal has been made that we centralize all 14th District courtrooms in a new building to be constructed in the Hogback Rd. Service Center (mid-way between Ann Arbor and Ypsilanti)," Straub noted.

"There might be some long-run savings, but consolidation would cost a lot of money up front, and we don't have it to spend. The courtrooms in Chelsea and Saline will stay where they are for now.

"The only real court space issue we have to decide right now is whether to establish a courtroom in Ypsilanti township, which we are being pushed to do. The township has offered to lease the space at a very favorable cost."

Straub said the concept of court centralization appeals to him because it has the potential to save money, but added that the issue of public convenience is also important in his thinking.

(Continued on page 11)

## Koenn Promises Fletcher Rd. Rail Crossing Analysis

The Washtenaw County Road Commission is "going to take a careful look at" the Fletcher Rd. crossing over the Conrail railroad tracks, commissioner Herman Koenn of Chelsea said last week.

"We haven't had a meeting since the accident (in which a Chelsea man was killed when his pick-up truck was hit by a freight train on Jan. 6)," Koenn said, "but I certainly intend to bring the matter up and have it analyzed."

Koenn revealed that, when the Dexter-Chelsea Rd. bridge over Mill Creek was replaced last summer, he recommended that the level of the road be raised to provide more visibility at the Fletcher Rd. rail crossing.

The bridge is located just west of Fletcher Rd. "If we had raised the road then to put it more nearly on a level with the railroad tracks, we could have solved a lot of the problem," Koenn said. "It wasn't done, I suppose because it would have cost more."

A few feet east of the Mill Creek bridge, Fletcher Rd. dead-ends into Dexter-Chelsea Rd. from the south. The railroad is perched on a high embankment several feet above the level of both roads. Drivers crossing the railroad from either direction have to be

nearly on top of them before they can see approaching train traffic. "It's too late now to do anything about that," Koenn said. "The new bridge is there, and it fixes the level of Dexter-Chelsea Rd. We've got to look at other possibilities."

Koenn said he doubted that Conrail would agree to lower the railroad grade and added there "would be a lot of opposition to closing off Fletcher Rd. south of the crossing, thus denying access to and from Dexter-Chelsea Rd."

Such a closing was proposed several years ago, Koenn recalled, and was rejected because of strong objections from Lima township residents. "I'm sure we would have more of the same if we suggested that today," he said.

Koenn indicated that the best available practical solution may be to install gates and signals at the Fletcher Rd. crossing, which is presently unguarded and marked only by a confusing set of warning signs.

"We're going to talk about it, look into it and see what can be done," Koenn promised. "I know it's a dangerous situation, and I'm confident anybody who looks at it will agree. Something needs to be done."

# The Chelsea Standard

Section 2 Chelsea, Michigan, Wednesday, February 1, 1984 Pages 9-18



**GETTING READY TO PLAY:** When Earl Heller and John Popovich prepare to play euchre by cutting the cards, they don't fool around. Somehow, that euchre deck looks a little bit thick. Two evenings of euchre will be featured at the American Legion's Winter Carnival at Cavanaugh Lake this weekend.

## Ice No Problem This Year For Legion's Winter Carnival

Lack of ice won't be a problem this weekend as the Chelsea American Legion Post 31 stages its annual Winter Carnival at Cavanaugh Lake.

Believe it or not after this harsh winter, some events had to be cancelled a year ago because mild weather had made the ice unsafe. The only concern this time is that there might be too much ice for fishing derby entrants to cut holes through it.

Headquartered at the Legion Post Home, 1700 Ridge Rd., Cavanaugh Lake, the carnival will open at 6 p.m. Friday. First scheduled event is the start of a two-evening euchre tournament beginning at 7:30.

Last year's euchre competition drew 160 players and proved so popular that it has been extended to two nights. Entry fee is \$2 each night. Prizes will be awarded for most games won and most lone hands played and made.

The fishing derby will begin at 7 o'clock Saturday morning and continue through 5 p.m. Sunday. Prizes will be awarded for first, second and third places in perch, bluegill and sunfish, crappie, and pike divisions. Entry fee is \$2.

There will be a special youth division in the fishing derby, with prizes for perch and panfish and an entry fee of 50 cents.

A guided cross-country skiing tour through parts of the Waterloo Recreation Area will begin at 1 p.m. Saturday and take about two hours. Participants are asked to sign in at the Legion post. Bob Rohrkemper will be the guide.

For those who prefer their winter sports indoors, Jill Flin-toft will entertain Saturday afternoon with a "sing along or listen" piano performance.

The traditional Saturday night dance has been given up this year in favor of a second evening of euchre, by popular demand. Play will begin at 7:30 p.m.

The fishing derby will continue on Sunday, beginning at 8 a.m. It will end at 5 p.m., and prizes will be awarded half an hour later after the measurements are made.

On Sunday afternoon a musical group headed by Tom Murray will perform from 2 to 5 p.m. with several other local musicians assisting.

The carnival will end officially at 6 o'clock Sunday evening, following presentation of fishing derby prizes.

Snowmobiling will be available throughout the carnival. Refreshments and snacks will be served at the Legion post.

The Winter Carnival is the Chelsea American Legion's major money-raising event of the year. Proceeds will be used to carry on the post's community activities.

The full program:

**Friday, Feb. 3—**  
 6:00 p.m.—Carnival begins.  
 7:30 p.m.—Euchre tournament.

**Saturday, Feb. 4—**  
 7:00 a.m.—Fishing Derby begins, \$2 fee, 12 and under 50 cents. Cavanaugh Lake only.

**1:00 p.m.—**Cross-country skiing in the Waterloo Recreation Area. Leave from the Legion.  
**2-5 p.m.—**Piano player on the upper deck. Enjoy the panoramic view of Cavanaugh Lake. Sing along or listen.  
**7:30 p.m.—**Euchre tournament. \$2 entrance fee.  
**Sunday, Feb. 5—**  
 8:00 a.m.—Fishing Derby continues.  
 2-5 p.m.—Music by Tom Murray and friends.  
 5:00 p.m.—Fishing Derby ends.  
 5:30 p.m.—Awarding of prizes.  
 6:00 p.m.—Carnival ends.  
 Snowmobiling, snacks, refreshments.

**Local Students Make Siena Dean's List**

Three Chelsea students have been named to the dean's list at Siena Heights College, Adrian, for the fall semester. They are Mary F. Boylan of 245 Park St., Donald R. Schrotenboer of 17255 Carolina Trace, and Michelle L. Weber of 175 Orchard St.

## Simplicity

# Pre-season Treason.

The factory would shoot us if they knew what we did with their suggested retail prices.

After all, feature by feature, Simplicity mowers and tractors already were the best values. Now they're even better. But not for much longer. So, come in and cash in today.

Don't tell, we've cut them up to \$1000

## CHELSEA HARDWARE

GARDEN 'N' SAW ANNEX  
 120 S. MAIN ST., CHELSEA PH. 475-1121

## HOME MORTGAGE LOANS ALL FORMS AND SIZES

**We have one just right for you!**

Ideas of style and comfort for a home are truly individual. Whether you've decided to choose an older home or build a new home, be assured of individualized home mortgage financing with us.

Home ownership pride can be yours. Financing tailored to your individual ability to repay, plus personalized service is yours, when you choose us for your home mortgage lender. Come in and talk to our home lending specialists, today!

# CSB CHELSEA STATE BANK

Member F.D.I.C.

Branch Office 1010 S. Main Phone 475-1355 Main Office 305 S. Main

# SPORTS

## It's Same Old Story As Bulldog Cagers Start Strong, Fade

Chelsea's varsity basketball team has had a tendency all season long to start strong, then fade. The Bulldogs did it again last Friday night, and the habit cost them a 69-58 home-court loss to Saline in a game that they could and perhaps should have won.

The defeat put an end to any Chelsea hopes to come back and challenge for the Southeastern Conference championship. They are 3-3 in the SEC, and struggling. Away games against Dexter and Lincoln this week provided tests to determine whether the Bulldogs can salvage anything from a thus far disappointing season.

Chelsea got off to a fine start against a very good Saline team and took a 32-28 lead into the locker room at half-time following a close and exciting 16 minutes of basketball. From there on, it was all Saline.

The Bulldogs managed to score just six points in the third quarter while the visitors were putting up 16 and turning the game around. The Hornets dominated a loosely played last period to seal the victory.

"We just can't seem to put together four consistent quarters of basketball," coach Paul Ash said after the game. "We play well for awhile, then lose our intensity, get down, and don't come back."

"We didn't run our offense at all well during the second half, and we just plain fell asleep on defense. Saline got several easy baskets on inside lay-ups that they should never have the chance to shoot."

"When we miss a couple of shots on offense we get down on ourselves, start to play hesitantly, and everything comes apart."

Give credit to Saline. The young Hornets—whose varsity squad does not include a single senior—showed why they have been tabbed as the team to beat in the SEC during the next couple of years. They played smart, well disciplined basketball and took advantage of the opportunities offered them.

Saline used a "spread" offense—the old four-corners-and-one-to-excellent effect, time and again springing somebody loose underneath the basket for undefended lay-ups against their bigger but slower opponents.

The Hornets likewise executed their zone defense well, sticking with it despite hot early Bulldog shooting that threatened to break the formation open but never quite did.

Marty Steinhauer paced the Bulldogs to their early lead with sharp outside shooting. He couldn't miss during the first quarter, connecting on six straight attempts. Marty finished the game with 22 points and a flock of assists and rebounds, an excellent all-around performance despite a gimpy knee that obviously slows him down.

Eric Schaffner scored 14 and David Kiel 10. Nobody else had more than four.

The Bulldogs had a 46-35 edge

in rebounding, and their 48 percent shooting average on 23 of 48 attempts was good enough to win most games. What those statistics don't show is that Chelsea turned the ball over an uncounted but large number of times on passes that alert Hornet defenders picked off.

"We may have been attempting one pass too many while trying to get the ball in close," Ash said. "We came down the floor several times and lost the ball without getting a shot. When our shooting went sour in the third quarter, the boys were trying to

pass the ball off instead of taking the shots they had open. That happens sometimes when you run into a streak of missed shots. Nobody wants to take a chance on another miss, and so they try to pass the ball to somebody else. If you throw it around enough times against a good defense, you eventually lose it."

The Bulldogs played at Dexter last night, and will travel to Willis to take on Lincoln Friday. Earlier in the season, when things were going well, Chelsea beat both in home contests.

## JV Basketball Drop Tough Game to Saline

Saline is considered to have the best junior varsity basketball team in the Southeastern Conference, and showed why last Friday night with a strong comeback behind fourth quarter effort that produced a 60-51 victory over the Chelsea JV's.

"We played our best game of the season," Chelsea coach Marlin Wilson said, "but Saline played a little bit better. They were just about perfect down the stretch. I'm proud of the way our kids played. It's no disgrace to be beaten by a team like that."

"What I have to wonder about is where Saline is going to find spots for all their talented boys to play next winter. They don't have a senior on this year's varsity, and all of their JV starters are ready to move up."

In last Friday night's game Chelsea got ahead with some sharp early shooting, dropped

slightly behind, battled back, and took a one-point lead early in the final period. Then the visitors took command, sinking a couple of key field goals to regain the lead and force Chelsea to foul to get the ball.

"We fouled the Saline players that we thought couldn't shoot well from the line," Wilson said, "and they came up with eight out of eight in one-and-one situations. Any time a team can do that in the clutch, it is going to win."

"We weren't shooting badly. They just were not missing anything, and they were playing very good defense besides."

Dan Bellus led the Bulldogs with 14 points. Ken Martin and John Jedele had eight each, and Kevin Maynard seven.

The loss left the JV's with a 6-5 season record and an optimistic coach. "We have come a long way this season," Wilson said.

## Freshman Cagers Play Best Games of Season

Chelsea's freshman basketball team played its best two games of the season last week, even though it lost one of them, coach Ted Hendricks said.

"I was really proud of the way the boys played," Hendricks said. "They have come a long way since the start of the season, and they performed very well in both games."

The frosh lost a one-point decision, 57-56, to Jackson County Western there on Tuesday night despite a red-hot 57 percent shooting from the floor.

"Western hit only 28 percent, but they made 19 of 30 from the foul line while we were shooting four out of 10. We were a little bit too aggressive on defense, and the officiating was kind of strange," Hendricks said.

"We had a chance to win during the last 15 seconds but missed a couple of shots on which fouls should have been called but weren't. It was an unusual game. Many of our kids were in foul trouble early, and that hurt."

Matt Steinhauer scored 24

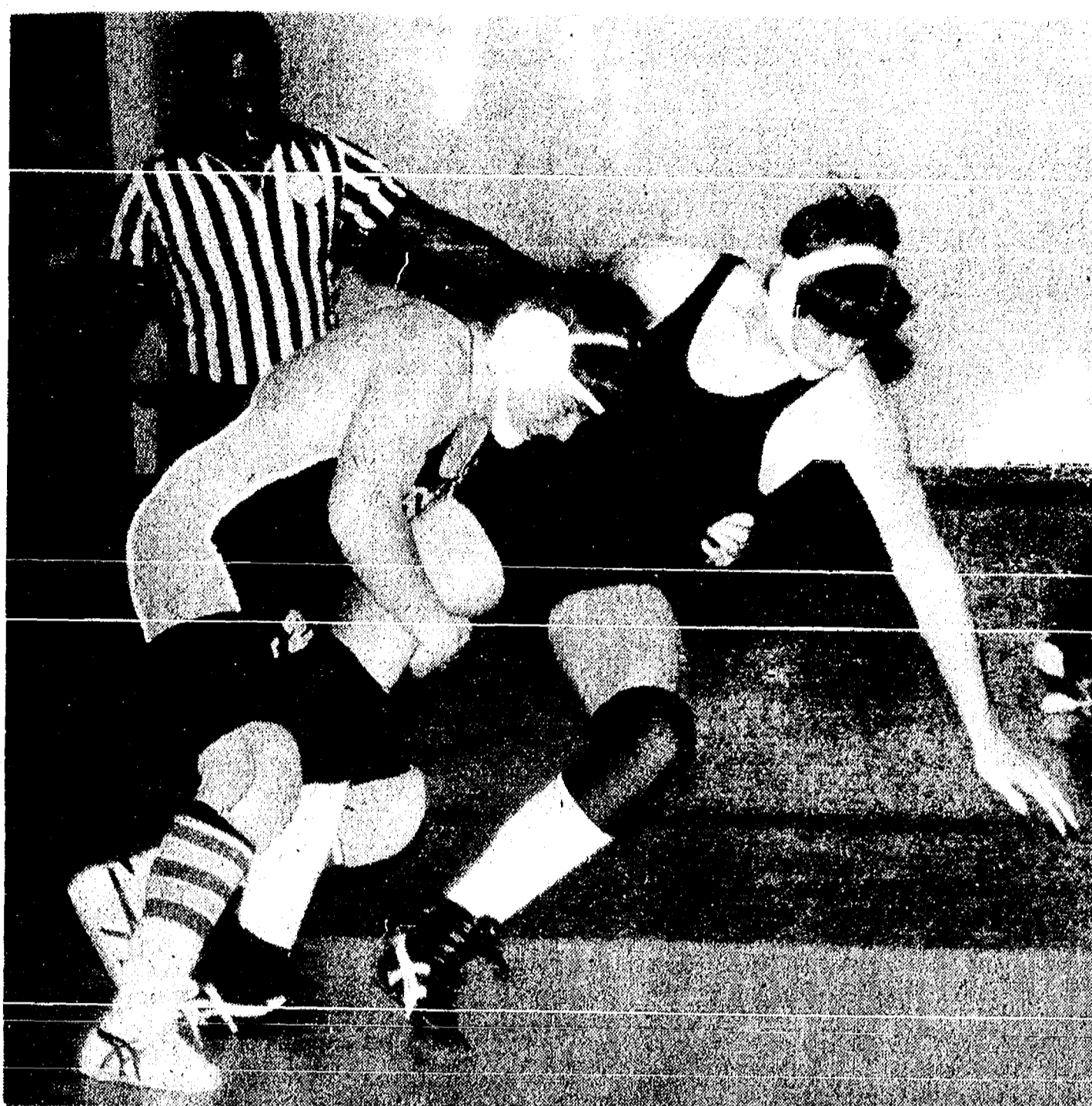
points and pulled down nine rebounds. Matt Bohlender was 10 and seven. Jon Lane was credited with only three points but had nine rebounds, five assists, three steals, three held balls for jumps, and one blocked shot while playing what Hendricks called an outstanding all-around game.

The following night the frosh avenged an earlier 25-point loss to Jackson Lumen Christi by winning a return match, 48-42, here, with an effort that Hendricks called "super pleasing."

The frosh used a 2-1-2 zone defense to good effect against their bigger opponents and again shot well, hitting 55 percent from the floor.

Mark Bareis was the big gun with 23 points, 12 rebounds, six assists, two steals and a blocked shot, a fine performance all over the court. Steinhauer scored 17.

"It was an excellent game for us," Hendricks said. "I feel good about this team. The boys have worked hard all season long, and now the results are showing."



SCORES TAKEDOWN: Steve Wingrove (left) has provided some needed strength in the upper weight divisions on the improving Chelsea varsity

wrestling team. He normally grapples in the 167-pound class. Here he is shown taking down an opponent during a match last week.

## Chelsea Wrestlers Win Three Meets In Week's Action

Chelsea's varsity wrestling team had one of its better weeks last week with three straight dual meet victories.

The Bulldog grapplers defeated Jackson Northwest, 33-31; South Lyon, 44-25; and Tecumseh, 55-18. They are 3-1 in the Southeastern Conference and shooting for a second-place finish behind Saline which everybody concedes is unbeatable in SEC competition.

An item of bad news is that Mark Rosentreter, one of Chelsea's top wrestlers, apparently is lost for the season with a recurring knee injury. "I'm not entirely certain about his status," coach Kerry Kargel said, "but it doesn't look good."

Results of the three meets: Chelsea 33, Jackson Northwest 31; Doug Harden (98) lost 11-1 decision.

Pete Hanna (105) won by fall in 56.

Bob Torres (112) won 11-7 decision.

## Beach Wrestling Team Beats Dexter, 54-27

The Beach school junior varsity wrestlers defeated Dexter, 54-27, last week, winning a number of matches by default as Dexter failed to put up entrants in several weight classes. The boys are undefeated for the season with a 4-0 dual meet record.

Robert Kornexl recorded a pin to run his individual record to 6-1.

"The kids are learning how to wrestle," coach Pat Clarke said. "I'm satisfied with their progress, and I hope it continues during the final two weeks of the season."

Meet results, with defaults recorded as falls, were:

Eric Worthing (68) pounds, won by fall.

Dave Bable (75) won by fall.

Rick Finch (82) won by fall.

Randy Dale (89) lost by fall.

Ken Wright (96) won by fall.

Robert Kornexl (103) won by fall in 1:58.

Joe Kosogi (110) lost 8-3 decision.

Paul Kennedy (117) lost by fall.

Rob Finch (124) lost by fall.

Jerrold Fletcher (131) lost 6-4 decision.

Scott Marentay (138) lost 5-2 decision.

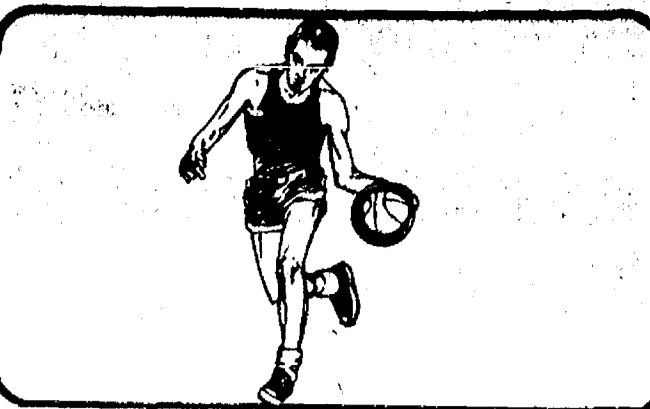
Tom Bennett (147) won by fall.

Bobby Rawson (157) won by fall.

Tony Flintoft (169) won by fall.

Randy Ferry (heavyweight) won by fall.

Other pins were scored in exhibition matches by Todd Therkow, Brant Snyder, Marty Heller, Matt Schwieger, Dwayne Elkins, Sam Eisenbeiser, Randy



## Jeff Dils Helps Hope to National Ranking Leadership

The Hope College basketball team is ranked first in the nation in NCAA Division III, and Chelsea's Jeff Dils is contributing to the success. Hope was 12-0 on the season after the week of Jan. 23, and was averaging better than 90 points a game.

Dils, a junior, doesn't start but comes off the bench and has played in every Hope game. He has shot better than 47 percent from the field and connected on 77 percent of his free throws, while collecting his share of rebounds and assists.

Hope has been winning games by such scores as 121-48, 95-66, 101-96 (triple overtime) and 95-66.

## Eighth-Graders Split Final Pair Of Cage Contests

The eighth-grade basketball team wound up its year with a 4-5 mark after losing last week to Saline, 37-23, and then rebounding to defeat Tecumseh, 44-28.

"We just couldn't get untracked against Saline," said coach Jim Tallman, "and we couldn't score. Saline was good, as they always are, but we should have done better."

The Tecumseh game was a different story as the eighth-graders wound up on a high note. "I was impressed with the way the boys played," Tallman said. "Especially in that unusually small and dark gym down there. Their floor is about as long as ours is wide."

Against Saline, Greg Boughton had six points, John Cattell five, and Tim Anderson and Phil Thomson four apiece.

Cattell led the scoring at Tecumseh with 11, followed by Matt Monroe with 10, Clay Hurd eight and Anderson six.

## Seventh-Grade Cagers End Year With 5-4 Record

Chelsea's seventh-grade basketball team ended its season with a 5-4 record following losses to Saline and Tecumseh last week by scores of 35-20 and 41-37. Both games were played away from home.

Coach Ron Lacro wasn't happy about the Saline contest, in which his boys just couldn't put the ball in the basket, but was pleased with the effort against Tecumseh even though the result was a defeat.

"They got down by 10 points at the half and then made a tremendous effort to come back," Lacro said, "and I'm proud of them. They are a good group of kids, and you will be hearing more about them in the years ahead."

Leading scorer in the Saline game was Junior Morseau with eight, followed by Larry Nix with six, and Loren Keezer, Alan Beckwith and John Collins two each.

Collins' 16 points topped the scoring against Tecumseh. Morseau had 14. Jeff Marshall four, Nix two and David Adams one.

Ferry, Rick Niethammer, Shane Keezer and Shawn Brown.

Telephone your club news to 475-1371

## UNADILLA STORE AND DELI

CENTENNIAL STORE SINCE 1873

CENTENNIAL STORE SINCE 1873

13329 UNADILLA RD. UNADILLA, MICH.  
498-2400

SUNDAY THROUGH THURSDAY, 10 a.m. to 10 p.m.  
FRIDAY & SATURDAY, 10 a.m. to 11 p.m.

WE TAKE FOOD STAMPS

WE TAKE FOOD STAMPS

**DELI IS TEMPORARILY CLOSED**

**Renie had an accident. Please bear with us. In the meantime we still have big subs, Stewart sandwiches and stuffed pizzas.**

**ICE FISHERMEN—Live Bait • Mousies, Waxworms, Minnows, Fishing Poles, Tear Drops, etc.**

**ALSO WE HAVE GROCERIES • LIQUOR • BEER • WINE • POP • FISHING NEEDS • ETC.**

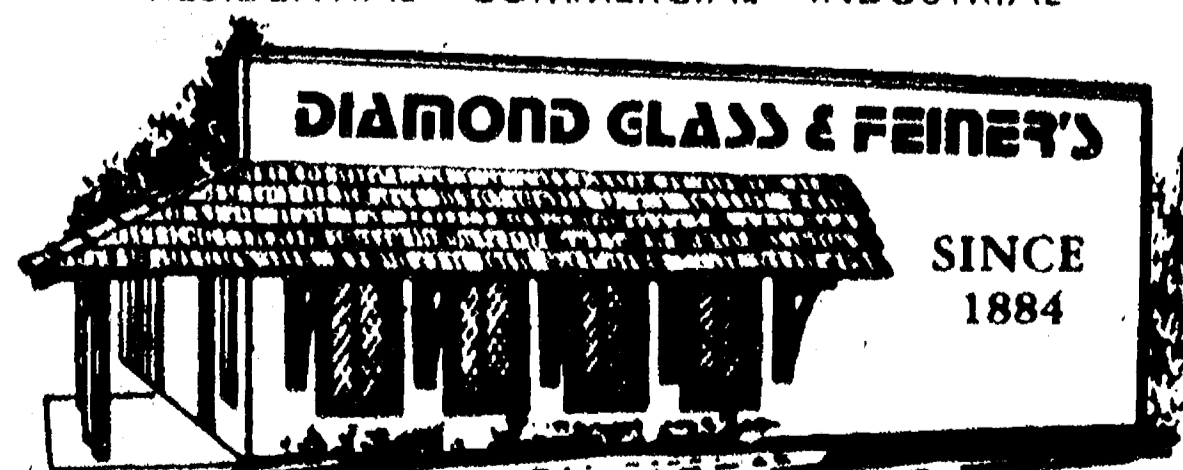
CHECK OUT ALL OUR LATEST MAGAZINES & BEST SELLER BOOKS

**HAND-DIPPED ICE CREAM CONES**

**LIQUOR SALES ON SUNDAY AFTERNOONS**

## SAFETY & PLEXIGLASS

MIRRORS • GLASS — SCREEN REPAIR  
DOORS & FRAMING • INSULATED GLASS  
SHOWER ENCLOSURES  
RESIDENTIAL • COMMERCIAL • INDUSTRIAL



Ph. 769-2722  
2350 W. LIBERTY, ANN ARBOR

Open Monday-Friday, 8 a.m.-5:30 p.m.  
Saturday, 9 a.m.-3 p.m.

24-HOUR EMERGENCY BOARD-UP SERVICE • CALL 769-2722 AFTER HOURS

# BOWLING

## Chelsea Lanes (Mixed)

Standings as of Jan. 27

	W	L
Ten Pins	100	47
S. Michigan Food Service	85	61
Washenaw Carpet Clean	85	61
Touch of Class	80 1/2	66 1/2
Ann Arbor Centerless	79 1/2	67 1/2
Vogel's Party Store	78	71
Schneider's Grocery	74	73
Shaklee	74	73
B & B	73 1/2	73 1/2
Wild Four	73	74
Chelsea Woodshed	70	77
Malloy Litho	64 1/2	82 1/2
Blue Gills	64	82
Warboys	63	84
Howlett Hardware	60	87
Alley Oops	53	94

## Chelsea Lanes Bantams

Standings as of Jan. 27

2 The Starliners	33	18
3 Road Runners	32	19
4 The A Team	29	22
5 Knight Riders	27	24
6 Starlits	25	26
7 The Care Bears	25	26
8 Q-Berts	24	27
9 Blondies	24	27
Games of 50 and over: A. Sweet, 65; White, 61; D. Taylor, 70; E. Hodges, 69; A. Richard, 62; K. Fowler, 78; B. Martell, 100; 78; D. Allen, 64; M. McCabern, 73; C. White, 111, 111; E. GreenLeaf, 56, 119; 100; M. Stewart, 70; J. Sanders, 74; Series of 120 and over: D. Taylor, 132; Martell, 183; D. Allen, 130; C. White, 122; E. GreenLeaf, 206; J. Navin, 151; M. Stewart 127; M. Sanders, 130.		

## Super Six League

Standings as of Jan. 25

	W	L
Chelsea Milling	82	58
Wonder Women	78	64
Three-N-Three	72	70
Night Owls	72	68
Bloopers	64	76
Highly Hopefuls	54	86

## Chelsea Lanes Jr. Major

Standings as of Jan. 27

	W	L
Weekend Warriors	46	30
Village Hair Forum	42 1/2	33 1/2
Gutter Dusters	39 1/2	36 1/2
Tuff Harders	38	38
Kid Power	37 1/2	38 1/2
Team No. 3	37	39
Arroyo	32	44
Security Guard and Lock	31 1/2	44 1/2

## Afternoon Delights

Standings as of Jan. 24

	W	L
Phantoms	47	27
Pinola Dinos	43	31
Marx	41	43
External Optimists	41	43
Arroyo	40	44
Split Seconds	37	47
Tri Turkeys	32	52

## Chelsea Suburban League

Standings as of Jan. 27

	W	L
D. D. DeBurring	94	56
Flow Ezy	88 1/2	62 1/2
After Hours Lock Service	88	66
Dana P.T.O. Gals	88	66
Chelsea Lanes	81	73
Woodshed	78	76
Discount Tire	78	76
Frisinger Realty	87	67
Edwards Jewelers	87	67
Chelsea Assoc. Builders	87	67
Jiffy Market	80 1/2	83 1/2

## Rolling Pin League

Standings as of Jan. 24

	W	L
Silverware	49	35
Tea Cups	48	36
Coffee Cops	45 1/2	38 1/2
Grinders	44	40
Brooms	44	40
Blenders	44	40
Jellyrollers	41	43
Jellypops	41	43
Pops	41	43
Beaters	40	44
Kookie Cutters	39	45
Happy Cookers	39	45
Troopers	38 1/2	45 1/2

## Nite Owl League

Standings as of Jan. 23

	W	L
Chelsea Lanes	103	51
Chelsea Lions	93	61
Charles Trinkle & Sons	81	73
Broderick Shell	77	77
Print Shop	77	77
Springer Agency	63	81
Village Bakery	63	81
Unpackaging	59	85

## Super Six League

Standings as of Jan. 25

	W	L
Chelsea Milling	82	58
Wonder Women	78	64
Three-N-Three	72	70
Night Owls	72	68
Bloopers	64	76
Highly Hopefuls	54	86

## Chelsea Suburban League

Standings as of Jan. 27

	W	L
D. D. DeBurring	94	56
Flow Ezy	88 1/2	62 1/2
After Hours Lock Service	88	66
Dana P.T.O. Gals	88	66
Chelsea Lanes	81	73
Woodshed	78	76
Discount Tire	78	76
Frisinger Realty	87	67
Edwards Jewelers	87	67
Chelsea Assoc. Builders	87	67
Jiffy Market	80 1/2	83 1/2

## Rolling Pin League

Standings as of Jan. 24

	W	L
Silverware	49	35
Tea Cups	48	36
Coffee Cops	45 1/2	38 1/2
Grinders	44	40
Brooms	44	40
Blenders	44	40
Jellyrollers	41	43
Jellypops	41	43
Pops	41	43
Beaters	40	44
Kookie Cutters	39	45
Happy Cookers	39	45
Troopers	38 1/2	45 1/2

## Nite Owl League

Standings as of Jan. 23

	W	L
Chelsea Lanes	103	51
Chelsea Lions	93	61
Charles Trinkle & Sons	81	73
Broderick Shell	77	77
Print Shop	77	77
Springer Agency	63	81
Village Bakery	63	81
Unpackaging	59	85

## Super Six League

Standings as of Jan. 25

	W	L
Chelsea Milling	82	58
Wonder Women	78	64
Three-N-Three	72	70
Night Owls	72	68
Bloopers	64	76
Highly Hopefuls	54	86

## Chelsea Lanes Jr. Major

Standings as of Jan. 27

	W	L
Weekend Warriors	46	30
Village Hair Forum	42 1/2	33 1/2
Gutter Dusters	39 1/2	36 1/2
Tuff Harders	38	38
Kid Power	37 1/2	38 1/2
Team No. 3	37	39
Arroyo	32	44
Security Guard and Lock	31 1/2	44 1/2

## Afternoon Delights

Standings as of Jan. 24

	W	L
Phantoms	47	27
Pinola Dinos	43	31
Marx	41	43
External Optimists	41	43
Arroyo	40	44
Split Seconds	37	47
Tri Turkeys	32	52

## Chelsea Suburban League

Standings as of Jan. 27

	W	L
D. D. DeBurring	94	56
Flow Ezy	88 1/2	62 1/2
After Hours Lock Service	88	66
Dana P.T.O. Gals	88	66
Chelsea Lanes	81	73
Woodshed	78	76
Discount Tire	78	76
Frisinger Realty	87	67
Edwards Jewelers	87	67
Chelsea Assoc. Builders	87	67
Jiffy Market	80 1/2	83 1/2

## Rolling Pin League

Standings as of Jan. 24

	W	L
Silverware	49	35
Tea Cups	48	36
Coffee Cops	45 1/2	38 1/2
Grinders	44	40
Brooms	44	40
Blenders	44	40
Jellyrollers	41	43
Jellypops	41	43
Pops	41	43
Beaters	40	44
Kookie Cutters	39	45
Happy Cookers	39	45
Troopers	38 1/2	45 1/2

## Nite Owl League

Standings as of Jan. 23

	W	L
Chelsea Lanes	103	51
Chelsea Lions	93	61
Charles Trinkle & Sons	81	73
Broderick Shell	77	77
Print Shop	77	77
Springer Agency	63	81
Village Bakery	63	81
Unpackaging	59	85

## Chelsea Suburban League

Standings as of Jan. 27

	W	L
D. D. DeBurring	94	56
Flow Ezy	88 1/2	62 1/2
After Hours Lock Service	88	66
Dana P.T.O. Gals	88	66
Chelsea Lanes	81	73
Woodshed	78	76
Discount Tire	78	76
Frisinger Realty	87	67
Edwards Jewelers	87	67
Chelsea Assoc. Builders	87	67
Jiffy Market	80 1/2	83 1/2

## Rolling Pin League

Standings as of Jan. 24

	W	L
Silverware	49	

Ads  
Taken  
Until  
10 a.m.  
Monday

# PUT IT IN THE WANT ADS FOR RESULTS

Just  
Phone  
475-1371

## Automotive 1

**Palmer Motors**  
Since April  
1912  
Buy With  
Confidence  
Michigan's Oldest  
Ford Dealer

1975 PLYMOUTH Sports Van.  
12 pass., runs great.  
1975 CHEVROLET 2-door.  
Great transportation.  
1977 THUNDERBIRD  
A real black beauty.  
1978 GRAND PRIX 2-dr.  
LJ model.  
1979 FORD F-150 Pick-up.

**We Buy Used  
Cars & Trucks**

1979 THUNDERBIRD.  
White and right.  
1980 MONTE CARLO 2-dr.  
6-cyl. with air.  
1981 FUTURA 2-dr.  
Sharp with air!  
1981 FORD F-100  
Only 40,000 miles.  
1982 FIREBIRD SE  
Fully equipped.

**Buy...Sell...  
Consign...**

1981 GMC PICKUP 6-cyl.  
25,000 miles.  
1982 MUSTANG GL 2-dr.  
Automatic with air.  
1982 RELIANT  
4-dr. Only 25,000 miles.  
1983 MUSTANG GL 3-door  
Demonstrator.  
1983 ESCORT 4-door GL  
Demonstrator.

**Palmer Motors**  
We Value Our  
Reputation  
70 Years Proves it!

Display Lot Open  
Mon. & Thurs. Even. 11:30  
Tues., Wed., Fri. 11:30  
Saturday 11:30

CHELSEA

475-1800 475-3650

## BODY SHOP

COMPLETE FULL TIME  
Estimates Available  
**PALMER FORD**

222 S. Main 475-1301  
351f  
ESCORT L '83 station wagon, 2-  
tone charcoal, power steering,  
5-speed manual, AM/FM stereo,  
electric defroster, undercoat, low  
bucket recliner seats, ES warranty,  
59,000 miles. \$6,400. Ph. 426-2788.  
x35

## AUTOMOBILE

82 CHEVY 10 Durango Pick-up,  
saddle tan, power brakes, power  
steering, posi-traction, V-6 engine,  
4-speed, manual transmission, new  
Goodyear radial tires, AM/FM stereo  
cassette radio, 32,000 miles. Loaded  
with many other options.  
1-(313)429-2755. x37-3

## Automotive 1

**Grohs Chevy**  
"Ride With A Winner!"  
7120 Dexter-Ann Arbor Rd.  
**USED CARS**

1984 CELEBRITY Eurosport, Demo.  
10,000 miles. Loaded.  
1982 CAPRICE 4-dr. sedan.  
1982 FAIRMONT Futura. Sharp!  
1981 CITATION 4-dr., auto.  
1982 OLDS CIERA  
1981 CHEVETTE 4-dr.  
Auto, transmission.  
1981 Z-28 CAMARO  
1979 AMC 3-dr. Spirit.  
1981 CITATION 2-dr.  
Low mileage.  
1982 CAVALIER 4-dr.  
1976 CAMARO 6-cyl., auto.  
1977 BUICK SKYHAWK  
1978 MALIBU Wagon, Auto., air.  
1978 IMPALA 2-dr. 47,000 miles.

## USED TRUCKS

1980 FORD 3/4-ton 4x4 with blade.  
1981 CHEVY 3/4-ton 4x4 with blade.  
1979 GMC 3/4-ton 4x4 with air.  
1979 CHEVY 3/4-ton automatic.  
1979 DODGE 3/4-ton Pickup.  
1977 CHEVY 44 Pickup.  
1977 DODGE Maxivan 3/4-ton.  
1981 JEEP CJ7.  
1974 CHEVY 1-ton dump truck  
with plow.

## SERVICE AND QUALITY IS OUR NAME!

Largest Selection of New  
4-Wheel Drive Vehicles

**DEXTER-426-4677**

Open daily 11:00 AM  
Mon. & Wed. 11:00 AM  
Saturdays 9-1 PM

## Farm & Garden 2

**Dairyland Seed Corn**  
MAGNUM, FUTURA  
V-44 ALFAFA.  
DRS SOY BEANS, and more.  
EARLY ORDER DISCOUNTS  
(313) 475-3390

## Recreation Eqpt. 3

CROSBY Fiberglass Boat — 15'8" with  
50 h.p. Johnson, electric start out-  
board motor, (needs overhaul) and  
trailer. Ph. 475-1371. x20f

## For Sale 4

**WATER SOFTENER** — Sears. Good  
condition. \$150. Girl's Huffy  
26" J-speed bike, excellent condi-  
tion. \$50. 475-8240. x35

**FOR SALE** — 1980 Skyline mobile  
home. Three bedrooms, fireplace,  
1 1/2 baths. (517) 596-2218. x36-2

**FOR SALE** — 7 h.p. Simplicity riding  
lawnmower, \$400; 5 1/2 h.p. Clinton  
outboard motor, \$200; Singer sewing  
machine, cabinet, \$100; woman's  
oak rocking chair, \$35; a butternut  
straight back chair, cane seat, \$35;  
4 ten-gallon crocks, \$15 ea.; 10-in.  
circular saw, extra blade & dittos,  
\$250; bench jig saw, \$25. Ph.  
475-8528. x35

**FOR SALE** — Solid walnut bedroom  
suite, very good condition, 4 pcs.  
plus kingsize headboard with frame,  
\$350; kingsize bedspread, used 3  
times, \$40; 3 living room lamps, \$20  
ea.; upright piano, needs work, \$50.  
Call 426-2414 after 4:30. x35

## For Sale 4

**WEDDING STATIONERY** — Prospective  
brides are invited to see our  
complete line of invitations and wed-  
ding accessories. The Chelsea Stand-  
ard, 300 N. Main. Ph. 475-1371. x8f

**WOOD** — Oak mixture, 4"x8"x8  
cords, \$70 cord, 7 cord minimum,  
semi load, or 3 cord 4"x8"x16"-18"  
split \$140 delivered in area.  
313-475-7631. x29f

**USA BUILDINGS** — Agricultural-  
commercial, full factory warranty,  
all steel-clear span, smallest building  
30'x40'x10', largest 70'x135'x16'. 3',  
40', 50', 60 ft. widths. In various  
lengths. Call 24 hours 1-800-482-4242  
extension 540. Must sell cheap im-  
mediately. Will deliver to building  
site. x36-7

**WILD GAME RECIPES** — "How To  
Change Wild Game and Wild Fowl  
into Tempting Dishes." Also secrets  
of stuffing, gravy and sauces for  
dressing game. Set of recipes  
available for \$1. Write P.O. Box 189,  
Grass Lake, MI. 49320. x35-4

## 1/2 off Needlecraft Kits

**INVENTORY CLEARANCE**  
— Candlewicking  
— Counted Cross Stitch  
— Embroidery  
— Soft Sculpture  
— Crochet  
— Latch Hook  
— Trapunto  
— Plastic Canvas Kits  
— Dazzle Aire Yarn by Caron  
3 oz. 4-ply 50' per skein;  
(limit 12 skein per customer)  
— Macrame  
— Maxi Cord, hundred yard, 7  
and 8 mm. \$2.99 per skein (Limit 6)

Monday thru Friday, 9 a.m.-4:30 p.m.

**John Alan Enterprises**

221 Jackson Industrial Drive  
1 block west of Zeeb on Jackson  
turn south at "Soups On" restaurant

x34f

**POLE BARN** for sale — To be dis-  
mantled and relocated. Call  
(313) 498-2561, evenings. x34f

**MARY KAY COSMETICS**, 35% dis-  
count. (517) 596-2184. x36-2

**KI KEROSENE** available at Chelsea  
Hardware. x39-5

**Antiques 4c**

**WANTED** — Fostoria sherbet glasses  
with Heather design. Ph. Helen M.  
475-1371 or 662-0524. x41f

**Valentine Sale  
FIRESIDE ANTIQUES  
1196 SOUTH MAIN  
CHELSEA**

475-9390

**STORE-WIDE SALE  
20% OFF**

FEBRUARY 2nd - Feb. 17th

OPEN: Thurs. and Fri., Noon  
to 5 p.m., Saturday, 10 a.m. - 5 p.m.  
x37-3

## Real Estate 5

**NEW TRI-LEVEL** on your improved lot.  
Three bedrooms. \$33,900.  
453-8175. x35-4

## CLASSIFIED ADVERTISING

**RATES**  
Ad Rates:  
10 words or less \$1.00  
when payment accompanies order  
7" per word over 10  
Card of Thanks & Memoriams  
50 words \$2.50  
when payment accompanies order  
7" per word over 50  
Add \$1.00 per insertion  
if changed.  
\$1.00 charge for tear-  
sheets and duplicate in-  
voice on any ad under  
\$5.00.  
Deadline for ads in  
classified section is noon  
Saturday. Copy received  
between noon Saturday  
and 10 a.m. Monday may  
appear under a separate  
heading on another page.  
Any change or cancella-  
tion in advertising made  
after noon Saturday may  
not appear in that week's  
issue.  
All advertisers should check their  
ad the first week. The Standard  
cannot accept responsibility for  
errors on ads received by  
telephone but will make every ef-  
fort to make them appear correct-  
ly. Refunds may be made only  
when erroneous ad is cancelled  
after the first week that it ap-  
pears.

## CLASSIFICATIONS

**Automotive** ..... 1  
**Motorcycles** ..... 1a  
**Farm & Garden** ..... 2  
**Equipment, Livestock, Feed**  
**Equipment** ..... 3  
**Boats, Motors, Mobile Homes,**  
**Snowmobiles, Sports**  
**Equipment**  
**For Sale (General)** ..... 4  
**Auction** ..... 4a  
**Garage Sales** ..... 4b  
**Antiques** ..... 4c  
**Real Estate** ..... 5  
**Land, Homes, Cottages**  
**Animals, Pets** ..... 6  
**Lost & Found** ..... 7  
**Help Wanted** ..... 8  
**Situation Wanted** ..... 8a  
**Babysitter** ..... 9  
**Wanted** ..... 10  
**Wanted To Rent** ..... 10a  
**For Rent** ..... 11  
**Houses, Apartments, Land**  
**Misc. Notices** ..... 12  
**Bus. Services** ..... 13  
**Financial** ..... 14  
**Bus. Opportunity** ..... 15  
**Card of Thanks** ..... 16  
**In Memoriam** ..... 17  
**Legal Notices** ..... 18

## COUNTRYSIDE FLEA MARKET

Brogan Rd. &  
4905 East Main St. (M-106)  
Stockbridge  
**HAND-MADE  
CABBAGE PATCH DOLLS**  
Antiques, large appliances,  
furniture, tools, household goods,  
toys, and more.  
Sat. - Sun., 9-5  
Dealers Wanted x32f

## Real Estate 5

**Exciting 2-BEDROOM CONTEMPORARY** home on 3 acres backing to  
State Land. 2 1/2-car garage with lift  
storage. Waterloo Rec Area. 20 min.  
from Chelsea. \$55,000.

**CHELSEA AREA** — Sugar Loaf Lake-  
front, 3-bedroom, year-round home,  
has been nicely remodeled with a  
rustic flair. Artesian well is an "ex-  
tra" on this property. \$45,000. Owner  
will finance with \$9,000 down.

**WATERLOO REC AREA** — 1.5 acres,  
wooded, sloping land. Grass Lake  
schools. \$10,000. L.C. possible.

**CHELSEA SCHOOLS** — 4.1 acres with  
hundreds of mature pine trees. View  
of quiet lake. Northwest of Chelsea.  
\$19,500. L.C. possible.

**5 ACRES** — Waterloo Rec Area, rolling  
land, side boundary includes  
edge of pretty pond. Stockbridge-  
Munith schools. \$13,500. L.C. possi-  
ble.

**GRASS LAKE SCHOOLS** — Pretty  
country setting, 10 acres rolling land  
with pond possible in center of prop-  
erty. On county maintained road, 1/4  
mile off blacktop. \$18,500. L.C. possi-  
ble.

**LAKEFRONT 22 ACRES** — Close to I-94  
in Waterloo Rec Area. Former  
children's camp has 550 ft. sandy  
beach. Lots of shade trees and hills.  
Large lodge-type building has fire-  
place and stage, plus full drive-in  
basement. Near golf course, hiking  
trails and bridge paths. This property  
could be divided into 4 mini estates.  
Chelsea schools. \$200,000.

**WATERLOO REALTY**  
355 Clear Lake  
JOANN WARYWODA, BROKER  
Phone 475-8674

Evenings and Sundays  
Carol Warywoda 475-2372  
Sue Lowe 1-517-522-5252  
x35

## THORNTON

475-9193

**NEW LISTING!** Well decorated  
4-bedroom ranch on almost 1 1/2  
acres. 2 1/2-car garage, super terms  
possible. Dexter schools. \$69,900.

**REDUCED** — Very nice 1,800 sq. ft.  
home at edge of Chelsea Village.  
Perfect for young executive couple.  
Great for entertaining. Fireplace, 2  
bedrooms and 2 baths. \$65,000.  
Terms.

**NEW LISTING!** Beautiful contem-  
porary situated upon 5 1/2 wooded  
lots fronting on Blind Lake. Cathedral  
ceilings. Quality throughout featur-  
ing 3 bedrooms and 2 1/2 baths. Great  
Room, and much more. \$107,000.

**WOODED SECLUSION!** Very private  
4-bedroom bi-level on 11 acres! Brick  
fireplace in living room. 2-car attach-  
ed garage. Chelsea schools. \$84,500.

**NEW LISTING!** Older home in Village  
of Chelsea. 2 bedrooms. New copper  
plumbing. Some new wiring. New  
decks and porches. Full basement. A  
good value at \$53,900!

**Eves**  
Norma Kern 475-8132  
George Knickerbocker 475-2646  
Lang Ramsay 475-8133  
Daria Bohlander 475-1478  
Steve Esaudes 475-7411  
Helen Lancaster 475-1198  
35f

**YOUR OWN SWISS CHALET** —  
Situated on 20 acres with over 5,000  
pines. Possibility for Christmas Tree  
Farm.

**UNIQUE 3-BEDROOM, 3-bath cedar**  
and brick "chalet" situated on one  
fenced acre. Hot water heater and 2  
fireplaces. Seller is offering 11%  
land contract.

**VERY COMFORTABLE 3-bedroom**  
with new furnace for hot water heat,  
all new electrical, hardwood floors,  
new pump and drainfield. Located  
near Sugar Loaf Lake on one plus  
acres.

**PARTIALLY EARTH SHELTERED** brick  
ranch with heat pump for efficient  
heating and cooling. Nicely  
decorated in earth tones with  
fireplace and two full baths. Ex-  
cellent access to I-94.

**DEXTER SCHOOLS** — Custom built  
3-bedroom ranch on 5 wooded acres.  
Seller will consider offer with closing  
as far ahead as six months.

**BOYCE ROAD** — Very nice 3-bed-  
room ranch on approximately 3  
acres. Open floor plan. Fantastic  
view of countryside from all direc-  
tions.

**LOVELY NEW COLONIAL** on 3 acres.  
Centrally located between Ann Ar-  
bor and Chelsea; Chelsea schools.  
\$94,900.

**NEED A MOTHER-IN-LAW'S** apart-  
ment? This is the place for you. Ple-  
nity of room for 2 homes under one  
roof. Priced right at \$59,000.

**CHOICE BUILDING SITES** also  
available—with very good terms.

The first states to have equal  
pay legislation for women were  
Michigan and Montana, in 1919,  
according to "Labor Firsts in  
America," a publication of the  
U. S. Department of Labor.

## WANTED

## STANDING

## TIMBER

Cash Paid In Advance

**Maple Rapids  
Lumber Mill, Inc.**

Ph. (517) 676-1329

## Real Estate 5

**FRISINGER**

475-8681

**BEAUTIFUL 5-acre wooded setting**  
has this immaculate 3-bedroom  
ranch with walk-out lower level,  
solar heating and green house,  
sauna, 2 baths, wood burner, pond,  
stream, 22'x28' pole barn, family  
room. Quality plus! \$98,500.

**CHELSEA** — Located in the Pines on 3  
acres, 2,800 sq. ft. 4 bedrooms, 3  
baths, study, family and dining  
rooms, fireplace. Needs some work.  
Priced to sell, \$85,000.

**REMODELED FARM HOME** on 2 acres  
1 mi. west of the Village of Chelsea.  
3 bedrooms, family and dining  
rooms, 18'x24' barn, gas heat, 2-car  
garage. \$57,900.

**VILLAGE OF CHELSEA** — Excellent  
brick 3-bedroom ranch on 2.4 acres,  
2 baths, recreation room, dining l.,  
2-car garage and nice large pole  
barn. Washington St. location.

**LANEWOOD** — Nice 1,950 sq. ft. 3  
bedrooms, 2 1/2 baths, family room,  
quality kitchen, large deck, fenced  
back yard, 2-car garage, freshly  
decorated. Immediate occupancy.  
\$78,900.

**BUILDING SITES:** Many to choose  
from, 2 ac, 5 ac, and 10 acres.

**FARMS:** 83 acres Grass Lake, 93  
acres South Lyon, 10 acres Chelsea.

**REALTORS**  
Bob Koch 475-4754  
Kathy Frisinger 475-2621  
Herman Koenn 475-2621  
Jack Wellnitz 475-7373  
x33f

## McKERNAN REALTY, INC.

475-8424, Chelsea Office

20179 McKernan Rd.

(517) 522-4739

Grass Lake Office  
300 E. Michigan Ave.

RESIDENTIAL-FARMS-COMMERCIAL

**PIERSON &  
RIEMENSCHNEIDER  
INC.**

115 South Street

475-9101 (Office)

475-2064 eves.

475-1469 eves.

**LOVELY & CHARMING** century old  
home on 10 plus acres—perfect for  
the active family. 3,111 sq. ft. in-  
cludes 5 BR's, 2 1/2 baths, formal din-  
ing room, fireplace. Full bsmt. In-  
ground pool. Additional 10 ac.  
w/barns available. \$125,000.

**HOME CLOSE TO Middle & High**  
schools would be excellent for the  
family w/teens. Formal dining room,  
full bsmt. Nice yard. 2-car garage.  
Need some TLC. \$54,900.

**SCENIC, ROLLING** country setting for  
this nice 3-yr.-old home on 10 ac.  
Pole barn on property. Good mini-  
farm. \$75,000.

**CHELSEA VILLAGE** — Property is zoned  
high density multiple—only va-  
cant multiple lot in Village. Give us a  
call about details.

**Animals, Pets 6**

**FOR INFORMATION ABOUT, or to**  
make an appointment with The  
Humane Society of Huron Valley  
Society and Spay/Neuter Clinic please phone  
(313) 662-4365, 10 a.m. to 4 p.m.  
Monday through Friday. x30f

**FREE PUPPIES** to good homes. 1 male,  
black and white, 1 female, black.  
Shepherd and Labrador. Please call  
1-(517)522-8920. x32f

**BEAUTIFUL PUPPIES FREE** to good  
homes — Black Labrador mix, 8  
weeks old, 5 males, 3 females.  
1-(517)851-7737 after 5 p.m. x37-3

**Lost & Found 7**

**FOR LOST OR FOUND PETS** —  
Phone The Humane Society of  
Huron Valley at 662-5585 between 11  
a.m. and 5 p.m. Sunday through  
Saturday; closed holidays. 3100  
Cherry Hill Rd., Ann Arbor. x38f

**LOST** — Strayed or stolen from Harr  
Rd. in Waterloo area. Medium-  
sized dog—gray, black saddle and  
mask. Answers to Harvey. Call Joyce  
at 475-1311, ext. 327. x35

**FOUND** — Child's necklace on Main  
St., Chelsea. Owner identify.  
475-1735. x35

**Help Wanted 8**

**ABILITIES ADD \$\$\$**  
Able to Type 55 wpm?  
Typists/General Office  
Account Clerks/Data Entry  
Arbor Temporaries, 761-5252  
x41

**EFFICIENT, experienced typist** for  
setting type on computer. Part-  
time. Call 475-1371. The Chelsea  
Standard for appointment for inter-  
view. x33f

**WALKATHON Co-ordinator:** March of  
Dimes seeks self-starter to co-  
ordinate event in Dexter-Chelsea  
area. \$100 per week, 5 weeks,  
various hours. Write MOD, 2200 S. In-  
dustrial Hwy., Ann Arbor, MI 48104.  
x35

**HELP WANTED, male or female** for  
hog farrowing operation. Ph.  
475-7326. x35

**WOOD CUTTERS** wanted. Ph.  
665-3434. x35

**WANTER TO HIRE** former Rockwell  
Spring employees. Call  
(614)299-2110, Capital Spring Co.,  
Columbus Ohio 43211. x35

**LADIES EARN FEE** LENGERIE —  
Have an Undercover Wear show.  
Call 475-2466 for details. x38-4

## Help Wanted 8

**APPRENTICESHIP OPPORTUNITY**

Applications for the Electrical Ap-  
prenticeship will be available at the  
Carpenters' Hall, 5300 W. Michigan  
Ave., Ypsilanti, Michigan in the Elec-  
trical Workers Business Office from  
8:00 a.m. to 4:30 p.m., Monday, Feb.  
13 thru Friday, Feb. 24, 1984.

Applicants must be residents of  
Washtenaw or Jackson county or  
Unadilla, Putnam, Hamburg, or  
Green Oak Township of Livingston  
county or Onondaga, Leslie, Stock-  
bridge, or Bunker Hill Township of  
Ingham County. In addition, applica-  
nts must have been a resident of the  
above geographical area for the  
twelve months prior to the date of  
application. Applicants from outside  
the above geographical area will  
NOT be accepted.

At the time of application, applicants  
must be at least



## OUT IN THE OPEN

By BILL MULLENDORE



Appointment of three new members to the Michigan Natural Resources Commission on Jan. 10 should have been front-page headline news in daily newspapers all over the state, but wasn't.

I had to wait until last week to find out by reading a bi-weekly paper devoted to reporting conservation and environmental news that the appointments had been made. None of the local dailies gave the story any prominence, nor did the DNR bother to send out a news release that reached me, and I'm on the mailing list.

Ordinarily, I don't dwell on the short-falls of my fellow journalists. We all have our good and bad days, and we all miss some stories that we should have been alert to. What bugs me about this one is that everybody missed it. Someone working for the wire services or on a newspaper copy desk should have been awake.

Next to the governor's office and the Legislature, the Natural Resources Commission is the most important agency of state government. Its actions affect more people in more ways than those of any other administrative body. The decisions of those seven people determine just about anything you do from the time you drink a glass of water in the morning until you eliminate and flush it down the toilet later in the day. You can't get much more basic than that.

The commission, and the Department of Natural Resources it controls, decide how you are going to dispose of your garbage and trash, what kind of outdoor recreation you are going to enjoy when and where, the quality of the air you are going to breathe, the public lands you are going to use for what purposes, the oil and gas and other minerals that are going to be extracted from underground Michigan.

That's just a partial list. It's in-

tended only to show that the public needs to pay attention to the seven citizens appointed to make the decisions which vitally concern everybody.

The three new appointees to the Natural Resources Commission are Marlene J. Fluharty of Mt. Pleasant, O. Stewart Myers of Bileley in Newaygo county, and Raymond Poupore of Warren.

They replace Paul Wendler, Jacob Hoefler and Hilary Snell. Except for Myers, who has been active in Michigan United Conservation Clubs, the proposed new commissioners are unknowns. Poupore has no apparent credentials whatever except that he is a representative of organized labor. Fluharty is vice-chair of the Michigan Environmental Review Board.

The appointments are subject to Senate confirmation, and my hope is that they will be subjected to close scrutiny, including public hearings, that might get the Michigan press off its collective duff and let the public know who these people are.

With these three appointments Gov. Blanchard has taken control of the Resources Commission in a bold and unprecedented political stroke. If approved by the Senate, the three newcomers will give the governor a hand-picked 6-1 majority on the commission, which means he can do whatever he wants to. He has the leverage and can dictate the votes.

Of most immediate interest is whether Blanchard will choose to keep Ronald O. Skoog as director of the DNR. Blanchard made it plain last summer, when a 4-3 commission vote gave Skoog the job, that he opposed the appointment and that he intended to get rid of the commissioners who made it. He has dumped three of them.

Skoog accepted the job against the odds, and has been given good marks by just about everybody—

sportsmen, environmentalists, legislators, the press, even members of the governor's staff. The word out of Lansing is that Blanchard and Skoog have held some personal meetings and have developed "mutual respect" for each other, whatever that means.

The impression here is that Skoog has not managed to get his name on the list of the governor's favorite people, and that he will be fired as soon as Blanchard can find a reason to do it. Skoog is walking a tight-rope, and one wrong move will cost him his job.

Blanchard holds the hole cards, six of the seven commission votes. He can call and cash in any time he wants to, and my guess is that he will do it soon. Blanchard is not the kind of politician who wants anybody exercising authority out from under his personal thumb. Skoog appears to be a dedicated, non-political conservationist. The two philosophies are bound to clash, probably soon, and Blanchard has all the advantages.



**SWIMMING TEAM MEMBERS:** Mike Coffman and Eric Bell are members of the Chelsea High school boys swimming team which has so far

posted a good season. Coffman posted a state qualifying time last week.

## Cage Play Ends for Beach Girls

The Beach school girls sixth grade basketball teams completed their six-week intramural season this week. The program was divided equally between time spent on individual skills and playing games with other Beach teams.

League play ended with a tie for first place with three teams having 4-2 records.

Those teams were: Melissa Johnson, captain; Jill Nowatski, Katie Peckham, Stacie Scott, and Stacy Carruthers.

Tiffany Moore, captain; Amy Thomson, Vicki Bullock, Kim Roberts and Barb Scriven.

Sharme Petty, captain; Allison Brown, Sarah Grau, Teresa Burskey, and Lori Johnson.

The other team in the girls league was Heidi Boyer, captain, and Lisa McGlinnen, Becca Burkel, Amy Martin, and Stacie Guenther.

Leading scorers were Stacie Scott, Sarah Grau, Tiffany Moore, Stacie Guenther, Lisa McGlinnen and Kim Roberts.

The intramural director this year was Ann Schaffner, assisted by Cindy Bradbury and John Schaffner.

Don't forget to renew your Chelsea Standard subscription!

## Howdy Holmes Going To New Racing Team

Howdy Holmes has ended his association with the Domino Pizza automobile racing team and will be driving for Mayer Motor Racing Co. of Farmington this year. He is the son of Howard Holmes, president of Chelsea Milling Co.

Holmes' decision to make a change was prompted by a disappointing number of car failures during the 1983 racing season. Holmes drove to a sixth-place finish in the Indianapolis 500 last Memorial Day, but very little went right for him after that.

Holmes will be driving a brand-new March Cosworth racing car being specially built for him in England. It's the same type of car he has been driving and which has been dominating Indy-car racing in recent years, but Holmes hopes the new one will work better.

Although he didn't come right

out and say so, Holmes obviously was unhappy with the car preparation and maintenance work done by the Douglas Sherson racing team of Adrian, which works under the Domino's Pizza banner.

"We had a lot of car trouble, and we just couldn't finish enough races," Holmes said. "I decided it was time to make a change."

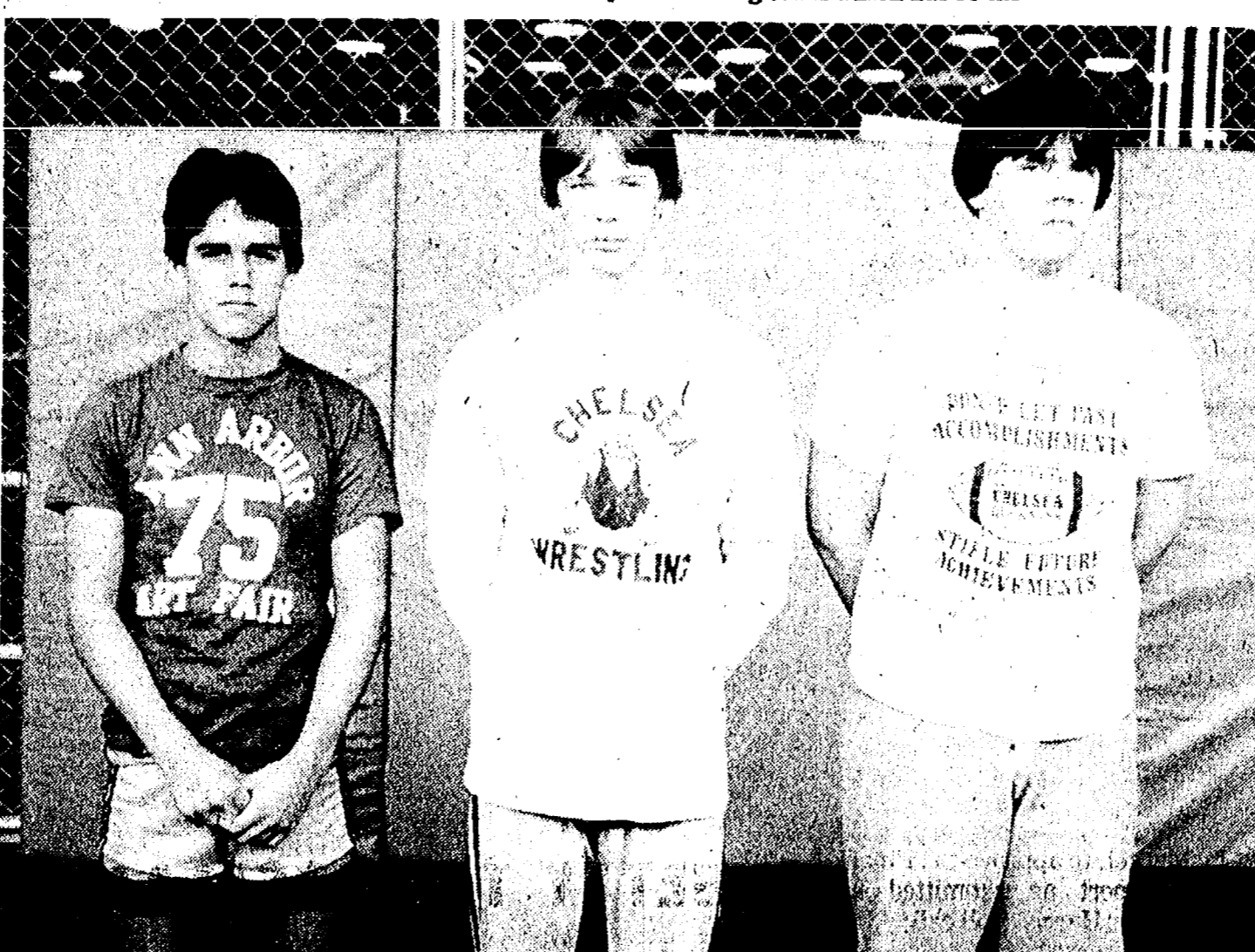
Since the beginning of this century, the U. S. population has increased about 200 percent, while per capita water use has increased 500 to 800 percent.

A piece of chalk in your silver chest will absorb moisture and retard tarnishing.

**RON KRULL CONSTRUCTION**  
426-2317 - Dexter  
BLOCK - BRICK - CONCRETE  
EXCAVATING

**SNOW REMOVAL**  
Driveways, Parking Lots, etc.

CALL  
**Ron Krull Construction Co.**  
426-2317



**VARSITY WRESTLERS:** Steve Rosentreter, Mark Edick and Jeff Larson (left to right) are members of the Chelsea wrestling team, and have contributed to the Bulldogs' success this season.

### SEC ROUN-UP:

## Milan Has Scare But Holds

Milan had a scare on its home court against a tough and determined Tecumseh team but hung on to win, 53-50, last Friday night and maintain its commanding two-game lead in the Southeastern Conference.

Tecumseh came within a point of pulling off the upset of the season in the SEC, using a slow-down strategy to hold the Big Reds far below their 70-plus per game scoring average. It almost worked.

Down 51-50 with 20 seconds to go, Tecumseh had the last-shot

opportunity but drew a controversial travelling call on a play which apparently had produced the winning basket.

A couple of free throws by Milan's Ron Dingman, Jr., boosted the final score to 53-50.

In other games, floundering Chelsea lost to rapidly improving Saline, 69-58, and Lincoln defeated Dexter, 51-46, in a close game that Dexter led most of the way before Lincoln came on strong in the fourth quarter.

Lincoln's victory put the Railsplitters in sole possession of second place in the conference

standings and gave them an edge for drawing a first-round bye in the tournament that will conclude the SEC season.

### SEC STANDINGS

	SEC	Points	Season
Milan	6-0	28	9-2
Lincoln	4-2	8	9-3
Chelsea	3-3	6	6-4
Tecumseh	2-4	4	4-7
Saline	2-4	4	3-8
Dexter	1-5	2	5-6

## Legal Concerns Of Women Subject Of Short Course

The legal concerns of women are the focus of Women and the Law, to be offered through Washtenaw Community College's women's studies program beginning Feb. 9.

Jean King, Ann Arbor attorney, will teach the special short course. With an emphasis on individual cases and legislative process, Women and the Law will examine legal aspects of credit, employment, sex discrimination, insurance, sexual harassment and the Equal Rights Amendment.

The one-credit class will meet each Thursday from 7:30 p.m. to 10 p.m. for seven weeks. Sessions will meet in the Family Education Building on the College's main campus at 4800 East Huron River Dr., Ann Arbor.

For more information call WCC staff at 973-3483.

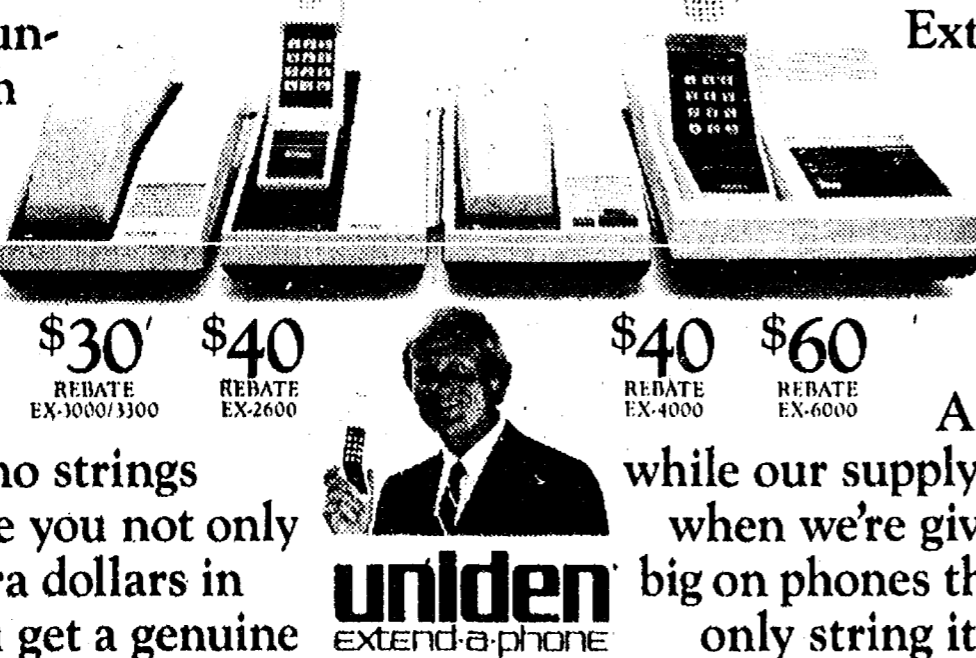
The first states to have equal pay legislation for women were Michigan and Montana, in 1919, according to "Labor Firsts in America," a publication of the U. S. Department of Labor.

**MICHAEL W. BUSH**  
C.P.A., P.C.  
CERTIFIED PUBLIC ACCOUNTANT  
6790 Dexter-Townhall Rd., Dexter  
Ph. 426-4556  
**INCOME TAXES CONSULTING**

Monday-Friday, 9 a.m. - 5 p.m.  
Evening & Saturday appointments available

## UNIDEN'S CORDLESS REBATES. NO STRINGS ATTACHED.

If you're still undecided on which cordless phone to buy, we have a most persuasive offer: The Uniden® Cordless Rebate. It's the rebate with no strings attached, because you not only get 30 to 60 extra dollars in your pocket, you get a genuine



Extend-A-Phone®... one of the best-selling cordless telephones in America. But you'd best see us before April 30, 1984, or while our supply lasts. After all, when we're giving rebates this big on phones this good, we can only string it out for so long.

\$30 REBATE EX-3000/3100

\$40 REBATE EX-2600

\$40 REBATE EX-4000

\$60 REBATE EX-6000

uniden extend-a-phone



For Sales & Service . . .

**HEYDLAUFF'S**

Open Mon. Evenings til 8:30

T. Fri. til 5:30. Sat til 4:00

113 N. Main St., Chelsea

Ph. 475-1221



**RAINBOW TOURS INVITE YOU!**  
JOIN THEM ON EUROPEAN HOLIDAY  
JUNE 15th — JUNE 30th  
Visit Germany, Austria, Switzerland, France.  
COST: \$1,795 per person

Includes all transportation, hotels, sightseeing, breakfast and dinner each day.  
Travel with people you know.

CONTACT: REV. R. J. RATZLAFF.  
663-1981

**KLINK EXCAVATING**  
For ALL Excavating Needs  
475-7631

Plus - Beach Sand, Fill  
ASPHALT

State Licensed and Insured

**JERRY HANSEN & SONS**  
ROOFING & SIDING COMPANY

Phone (313) 994-4232  
P. O. Box 2123, Ann Arbor, Mich. 48106

ALL TYPES OF ROOF REPAIRS, SIDING, GUTTERS,  
DOWNSPOUTS, INSURANCE WORK

27 Years Experience

**DRAINS and SEWERS**  
CLEANED ELECTRICALLY

SINKS  
SUMPS  
TOILETS



FLOOR  
DRAINS

MAIN  
LINES

STORM  
SEWERS

PROMPT SERVICE

SEPTIC TANKS-Cleaned, Installed, Repaired  
DRAINFIELD & OTHER EXCAVATING

• RESIDENTIAL • COMMERCIAL • INDUSTRIAL

**BOLLINGER SANITATION SERVICE**  
PHONE (313) 475-2097

## Dexter Township Board Proceedings

**Regular Meeting of the Dexter Township Board**  
Date: Tuesday, Jan. 17, 1984.  
Place: Dexter Township Hall.  
Present: Arlene Howe, William Eisenbeiser, Julie Knight, Doug Smith, Jim Drolett.  
Meeting called to order by the supervisor, Arlene Howe. Agenda approved.  
Moved by Knight, supported by Smith, to approve the minutes of the Jan. 3, 1984 meeting. Carried.  
Treasurer's Report—Monthly and quarterly reports given. Clerk's Report.  
Moved by Drolett, supported by Knight, to pay the bills as submitted. Carried.  
Zoning Inspector's Report—Enclosed.  
Zoning Report by Tom Ehman.  
Washtenaw County Board of Commissioners' Report by Jim Drolett.  
Health Department Report by Doug Smith.  
Portage-Base Line Lake onsite Sewage Report by Doug Smith.  
Moved by Eisenbeiser, supported by Drolett, to have the Supervisor send a letter to the District Court requesting information on traffic ordinance violations in Dexter Township. Carried.  
Sheriff's Dept. Report received and filed.  
Moved by Drolett, supported by Eisenbeiser, to adjourn the meeting. Carried.  
Meeting adjourned.  
Respectfully submitted,  
William Eisenbeiser,  
Dexter Township Clerk.

## Lyndon Township Board Proceedings

**Regular Meeting**  
Jan. 17, 1983  
Lyndon Township Board Meeting, January 17, 1984, Lyndon Township Hall, 7:30 p.m.  
Meeting called to order by supervisor and minutes approved as read.  
Zoning violations discussed and action taken.  
Moved and carried to reappoint George Coash, E. Jay Hopkins, and Richard Menge to the Board of Appeals for another three years.  
Reports from Planning Commission and Treasurer presented.  
Moved and carried to pay bills totaling \$7,248.55 from General

## Chelsea Village Council Proceedings

**January 3, 1984**  
Regular Session.  
The meeting was called to order at 7:30 p.m. by President Merkel.  
Present: President Merkel, Clerk Rosentreter and Administrator Weber.  
Trustees Present: Radloff, Merkel, Steele, Keezer, Satterthwaite and Riemenschneider.  
Others Present: Police Chief Aello, Civil Defense Director Schantz, Stanley Weir, Cecil Clouse, Emmett Hanked, Robert Steger and Bill Mullendore.  
The minutes of the regular meeting of December 20, 1983 were read.  
Motion by Satterthwaite, supported by Keezer, to approve the minutes as read. Roll call: Ayes all. Motion carried.  
Police Chief Aello submitted the Police Department Report for the month of December 1983.  
Civil Defense Director Schantz discussed a request by Communications Club for an antenna tower.  
President Merkel appointed Trustee Steele to work with Civil Defense Director Schantz on obtaining more concrete information in regards to antenna tower.  
Bids for the 1983/84 audit were opened.  
Motion by Satterthwaite, supported by Radloff, to review bids and postpone action until the next council meeting of January 17, 1984. Roll call: Ayes all. Motion carried.  
Administrator Weber discussed Alternative Power Sources/Industrial Rate.  
Motion by Keezer, supported by Merkel, to hold the 1984 regular sessions of the Village Council on the first and third Tuesdays of each month at 7:30 p.m. in the Council Chambers of

Fund and \$94.91 from Federal Revenue Sharing.  
Annual Road Commission meeting to be held on January 20, 1984 at 9:00 a.m. at the Road Commission office.  
The State notified the township that Kathleen Dyer of 18504 M-52 withdrew her application for an Adult Foster Care Family Home.  
Nine-month Budget Review presented.  
Moved and carried to adjourn.  
Linda L. Wade, Clerk.

the Municipal Building, 104 E. Middle Street. Roll call: Ayes all. Motion carried.  
Motion by Satterthwaite, supported by Radloff, to hold a public hearing on the request of Hatch Stamping Company to establish a Plant Rehabilitation District and an Industrial Development District on February 7, 1984 at 7:30 p.m. Roll call: Ayes all. Motion carried.  
Motion by Keezer, supported by Radloff, to authorize payment of bills as submitted. Roll call: Ayes all. Motion carried.  
Motion by Radloff, supported by Keezer, to adjourn. Roll call: Ayes all. Motion carried. Meeting adjourned.  
Evelyn Rosentreter, Village Clerk.

**January 17, 1984**  
Regular Session.  
The meeting was called to order at 7:30 p.m. by President Merkel.  
Present: President Merkel, Clerk Rosentreter and Administrator Weber.  
Trustees Present: Steele, Radloff, Merkel, Keezer, Satterthwaite and Riemenschneider.  
Others Present: Ishmael Picklesimer, Emmett Hanked, Sergeant Lenard McDougall, Fred Harris, Lee Fahrner, Stanley Weir, Cecil Clouse, Keith Boylan, David Bulson, Brenda McGibney, JoAnne Alber, Steven Everett, David Oesterle, Erick Hammer, JoAnne Oesterle, Tina Kenney, Rosemary Harook, Tom Schulte, Luther Kusterer, Civil Defense Director Schantz, Bill Mullendore, Fire Chief Hanked, Robert A. Steger and Peter Flintoff.  
The minutes of the regular meeting of January 3, 1984 were read.  
Motion by Keezer, supported by Riemenschneider, to approve the minutes as read. Roll call: Ayes all. Motion carried.  
Fire Chief Hanked submitted the Fire Department Report for the month of December 1983.  
Superintendent of the Department of Public Utilities Hafner submitted the Activity Report for the Department of Public Utilities for the month of December 1983.  
Treasurer Mary Harris submitted the Financial Report for the month of December 1983.  
Motion by Keezer, supported by Merkel, to approve the Financial Report as submitted by Treasurer Harris. Roll call: Ayes all. Motion carried.  
Motion by Keezer, supported by Merkel, to approve the Budget Report for the month of December 1983 as submitted by Administrator Weber. Roll call: Ayes all. Motion carried.  
Lee Fahrner reviewed the contract documents for improvements to the landfill.  
Motion by Keezer, supported by Steele, to advertise for bids on construction of a solid waste landfill cell per plans and specifications as prepared by Washtenaw Engineering. Roll call: Ayes all. Motion carried.  
Motion by Merkel, supported by Keezer, to accept the Proposal from Cummins and Barnard, Inc., dated January 6, 1984 to perform an Electric Power Supply Alternative Study. Roll call: Ayes all. Motion carried.  
Motion by Keezer, supported by Merkel, to table action on the bids for the 1983/84 village audit until the February 7, 1984 meeting. Roll call: Ayes all. Motion carried.  
Motion by Satterthwaite, supported by Radloff, to enter into an agreement with other units of government which have granted franchises to Clear Cablevision, Inc. (Saline, Milan, Dexter, Dundee, Manchester and Clinton) to establish a commission to study the concept of one or more jointly operated and funded local origination channels to transmit programs to all respective communities. Roll call: Ayes all. Motion carried.  
Motion by Radloff, supported by Satterthwaite, to accept a bid of \$350.00 for a 1970 1/2 ton Chevrolet truck. Roll call: Ayes all. Motion carried.  
Motion by Keezer, supported by Riemenschneider, to set a date of February 7, 1984 for a public hearing to amend the Zoning Ordinance to zone 2 plus acres along the east side of Freer Road to RS-1. (Application No. 83-04) Roll call: Ayes all. Motion carried.  
Motion by Keezer, supported by Satterthwaite, to appoint Administrator Weber as the village contact to co-ordinate efforts to comply with Federal Revenue Sharing Regulations. Roll call: Ayes all. Motion carried.  
Motion by Radloff, supported by Keezer, to authorize payment of bills as submitted. Roll call: Ayes all. Motion carried.  
Motion by Keezer, supported by Merkel, to adjourn. Roll call: Ayes all. Motion carried. Meeting adjourned.  
Evelyn Rosentreter, Village Clerk.



The fuzz on tennis balls isn't there by chance—it gives the ball action when the ball hits the court. It also slows the flight of the ball.

## - NOTICE - Sylvan Township Taxpayers

Sylvan Township Treasurer will be at Sylvan Township Hall, 112 W. Middle St., Chelsea, to collect Sylvan Township Taxes every Wednesday and Friday from 1 to 5 p.m., and Saturdays from 10:00 a.m. to 3:00 p.m. during the months of Dec., Jan., and Feb.

PAYMENTS WILL BE ACCEPTED BY MAIL  
Receipt Will Be Returned

All Dog Licenses must be paid to Sylvan Township Treasurer before March 1, 1984, to avoid penalty.

Dog License \$10. With proof of spaying or neutering, \$5. Blind and deaf citizens with Leader Dog, no charge. Senior Citizen, 65 years or older, \$5.

Rabies Vaccination papers must be presented in order to obtain license.

**FRED W. PEARSALL**  
SYLVAN TOWNSHIP TREASURER  
PHONE 475-8890

## - NOTICE - Lima Township Taxpayers

In December, I will be at my home, 13610 Sager Rd., to collect Lima Township taxes. Every Friday from 9 a.m. to 5 p.m. and every Saturday from 9 a.m. to 1 p.m. In January and February I will collect Lima Township taxes on Saturdays from 9 a.m. to 1 p.m. Feb. 24th I will be at the Chelsea State Bank from 9 a.m. to 12 Noon and 1 to 5:30 p.m. Evenings and other dates by appointment.

Payments may be made by mail. Receipt will be returned.

All Dog Licenses must be paid to Lima Township Treasurer before March 1, 1984, to avoid penalty.

Dog License \$10. With proof of spaying or neutering, \$5. Blind and deaf citizens with Leader Dog, no charge. Senior Citizen, 65 years or older, \$5.

Unexpired rabies vaccination papers must be presented in order to obtain dog licenses.

**BETTY T. MESSMAN**  
LIMA TOWNSHIP TREASURER  
13610 Sager Rd. Ph. 475-8483

## NOTICE LYNDON TOWNSHIP TAXPAYERS

I will be at 17301 M-52 to accept taxes and issue dog licenses every Tuesday from 10:00 a.m. to 5:00 p.m. and every Friday from 9:00 a.m. to 5:00 p.m. during the months of December, January, and February. I will be available at Lyndon Townhall on Saturday, February 4 and 11 from 9:00 a.m. to 12:00 p.m. to accept payment of taxes and issue dog licenses.

Payments by mail will be accepted

Dog license fees are as follows:

Regular dog license \$10.00  
Spayed or Neutered dog license (with written proof) \$ 5.00  
Blind and Deaf Citizens with Leader Dogs \$ 0.00  
Senior Citizens 65 years and older \$ 5.00

Rabies Vaccination Papers must be presented

**JANIS KNIEPER**

LYNDON TOWNSHIP TREASURER

17301 M-52 Phone 475-3686 Chelsea, Mi. 48118

## — NOTICE — DEXTER TOWNSHIP TAXPAYERS

I will be at Dexter Township Hall, 6880 Dexter-Pinckney Rd., Dexter, to collect Dexter Township taxes on the following days: every Tuesday and Friday from 9 a.m. to 4 p.m. for months of December, January and February. Also, on Saturday, Dec. 31, and Wednesday, Feb. 29, 1984, from 9 to 4.

Those who wish may send check or money order. Receipts will be returned by mail.

All dog licenses must be paid to the Dexter Township Treasurer before March 1, 1984 to avoid penalty.

Dog Licenses \$10. If spayed or neutered, \$5. Proof of altering required. Senior Citizens pay only \$5 for dog licenses.

Unexpired rabies vaccination papers must be presented in order to obtain dog licenses.

**JULIE A. KNIGHT**

Dexter Township Treasurer  
6880 Dexter-Pinckney Rd. Ph. 426-3767

## NOTICE

### To Village Property Owners and Occupants of Property

Per Chelsea Village Ordinance No. 6, all village property owners and/or occupants of property are required to remove snow and ice from the public sidewalk in front of their premises.

**CHELSEA VILLAGE COUNCIL**

## REGISTRATION NOTICE

-FOR-

### VILLAGE ELECTION Monday, March 12, 1984

To the Qualified Electors of the

### VILLAGE OF CHELSEA

COUNTY OF WASHTENAW, STATE OF MICHIGAN

Notice is hereby given that in conformity with the "Michigan Election Law," I, the undersigned Clerk, will upon any day, except Sunday and a legal holiday, the day of any regular or special election or primary election, receive for registration the name of any legal voter in said Township, City or Village not already registered who may APPLY TO ME PERSONALLY for such registration.

### NOTICE IS HEREBY GIVEN THAT I WILL BE AT MY OFFICE February 14, 1984 - Last Day

From 8 o'clock a.m. until 8 o'clock p.m.  
The Thirtieth day preceding said Election  
As provided by Section 498, Act. No. 116,  
Public Acts of 1954. As Amended

at the Chelsea Municipal Bldg.  
104 E. Middle St.

From 8 o'clock a.m. until 8 o'clock p.m. on said day for the purpose of REVIEWING the REGISTRATION and REGISTERING such of the qualified electors in said TOWNSHIP, CITY or VILLAGE as SHALL PROPERLY apply therefor.

The name of no person but an ACTUAL RESIDENT of the precinct at the time of registration, and entitled under the Constitution, if remaining such resident, to vote at the next election, shall be entered in the registration book.

### ELECTOR UNABLE TO MAKE PERSONAL APPLICATION, PROCEDURE

SEC. 504. Any elector who is unable to make personal application for registration because of physical disability or absence from the township, City or Village in which his legal residence is located may be registered prior to the close of registration before any election or primary election by securing from the Clerk of the Township, City or Village in which is located his legal residence duplicate registration cards, and executing in duplicate the registration affidavit before a notary public or other officer legally authorized to administer oaths, and returning such registration cards to the Clerk of the Township, City or Village before the close of office hours on the last day of registration prior to any election or primary election. The notary public or other officer administering the oath shall sign his name on the line for the signature of the registration officer and designate his title.

### UNREGISTERED PERSONS NOT ENTITLED TO VOTE

SEC. 491. The inspectors of election at any election or primary election in this State, or in any District, County, Township, City or Village thereof, shall not receive the vote of any person whose name is not registered in the registration book of the Township, Ward or Precinct in which he offers to vote. (As provided under Act 116, P. A. 1954.)

### TRANSFER OF REGISTRATION, APPLICATION, TIME

SEC. 506. Any registered elector may upon change of residence within the Township, City or Village cause his registration to be transferred to his new address by sending to the Clerk a signed request, stating his present address, the date he moved thereto, and the address from which he was last registered, or by applying in person for a transfer. The Clerk shall strike through the last address, ward and precinct number and record the new address, ward and precinct number on the original and duplicate registration cards, and shall place the original registration card in proper precinct file. Such transfers shall not be made after the 30th day next preceding any election or primary election, unless such 30th day shall fall on a Saturday, Sunday or a legal holiday in which event registration transfers shall be accepted during the following day.

### TRANSFER OF REGISTRATION ON ELECTION DAY

SEC. 507. Any registered elector who has removed from one election precinct of a Township, City or Village to another election precinct of the same Township, City or Village and has not recorded such removal with the local Clerk shall execute a transfer of registration request, listing the new residence address thereon over his signature, with the election board in the precinct in which he is registered at the next ensuing primary or election. The inspector of election in charge of the registration records shall compare the signature thereon with the signature upon the applicant's registration record and, if the signatures correspond, then the inspector shall certify such fact by affixing his initials upon said request. The applicant for transfer, after having signed an application to vote as provided in Section 523 of this act, shall then be permitted to vote in such precinct for that primary or election only. The application for transfer shall be filed with the Township, City or Village Clerk who shall transfer such voter's registration in accordance with the application. When the name of any street in a Township, City or Village has been changed, it shall be the duty of the Township, City or Village Clerk to make the change to show the proper name of street in the registration records, and it shall not be necessary for the elector to change his registration with respect thereto in order to be eligible to vote.

**EVELYN ROSENTERE**  
Village Clerk

## CONSOLIDATED REPORT OF CONDITION OF CHELSEA STATE BANK

of Chelsea-Michigan 48118 And Foreign and Domestic Subsidiaries, at the close of business December 31, 1983 a state banking institution organized and operating under the banking laws of this State and a member of the Federal Reserve System. Published in accordance with a call made by the State Banking Authorities and by the Federal Reserve Bank of this District.

ASSETS	
Cash and due from depository institutions	\$ 8,940,000
U. S. Treasury securities	9,989,000
Obligations of other U. S. Government agencies and corporations	6,784,000
Obligations of States and political subdivisions in the United States	8,643,000
All other securities	84,000
Federal funds sold and securities purchased under agreements to resell	2,300,000
a. Loans, Total (excluding unearned income)	\$28,474,000
b. Less: Allowance for possible loan losses	206,000
c. Loans, Net	28,268,000
Bank premises, furniture and fixtures, and other assets representing bank premises	809,000
All other assets	1,392,000
<b>TOTAL ASSETS</b>	<b>\$67,209,000</b>
LIABILITIES	
Demand deposits of individuals, partnerships, and corporations	\$ 6,721,000
Time and savings deposits of individuals, partnerships, and corporations	47,733,000
Deposits of United States Government	14,000
Deposits of States and political subdivisions in the United States	4,005,000
Certified and officers' checks	341,000
Total Deposits	\$58,814,000
a. Total demand deposits	\$ 7,121,000
b. Total time and savings deposits	51,693,000
Interest-bearing demand notes (note balances) issued to the U. S. Treasury and other liabilities for borrowed money	132,000
All other liabilities	1,112,000
<b>TOTAL LIABILITIES (excluding subordinated notes and debentures)</b>	<b>\$60,058,000</b>
EQUITY CAPITAL	
Common Stock	
a. No. shares authorized	16,000
b. No. shares outstanding	16,000 (par value)
Surplus	2,000,000
Undivided profits and reserve for contingencies and other capital reserves	4,351,000
<b>TOTAL EQUITY CAPITAL</b>	<b>\$ 7,151,000</b>
<b>TOTAL LIABILITIES AND EQUITY CAPITAL</b>	<b>\$67,209,000</b>

**MEMORANDA:**  
Deposits of state money - Michigan 18,000  
Time certificates of deposit in denominations of \$100,000 or more 5,450,000  
Average for 30 calendar days ending with report date:  
a. Total deposits \$58,814,000  
J. Paul G. Schaible, Jr., Executive Vice President & Cashier of the above-named bank do hereby declare that this report of condition has been prepared in conformance with the instructions issued by the Board of Governors of the Federal Reserve System and is true to the best of my knowledge and belief.

PAUL G. SCHAIABLE, JR.

We, the undersigned directors, attest the correctness of this report of condition and declare that it has been examined by us and to the best of our knowledge and belief has been prepared in conformance with the instructions issued by the Board of Governors of the Federal Reserve System and is true and correct.

**PAUL E. MANN**  
**DAVID H. STRIETER**  
**ROBERT L. DANIELS**  
Directors

## + AREA DEATHS +

### William L. Eder

**Jackson**  
(Formerly of Chelsea)  
William L. Eder, 52, of Jackson, formerly of Chelsea, died last Saturday at St. Joseph Mercy Hospital, Ann Arbor.

He was born Aug. 11, 1931, in Chelsea, the son of George and Elsie (Casterline) Eder, and was married on Sept. 3, 1971, to Dolores M. Keezer, who survives. Mr. Eder had been a resident of Jackson for the past 12 years and was retired from the Federal Screw Works in 1979 after 28 years. He was a member of St. Mary's Catholic church of Chelsea.

Surviving besides his widow are a step-daughter, Pam Risner of Jackson; a granddaughter, Candice; three brothers, Charles, James and Thomas Eder, all of Chelsea; four sisters, Mrs. Robert (Pat) Schantz and Mrs. Gerald (Regina) Kenney, both of Chelsea, Mrs. James (Kay) Schook of Manchester and Rosine Eder of Chelsea; an aunt, Sister Helen Marie Eder of Adrian; and an uncle, Russell Casterline of Ann Arbor, and several nieces and nephews.

Mass of the Resurrection was held yesterday at St. Mary's church with the Rev. Fr. David Philip Dupuis officiating. Burial was in Mt. Olivet Cemetery Chelsea.

Arrangements were made by the Staffan-Mitchell Funeral Home, Chelsea.

### SCHOOL LUNCH MENU

Thursday, Feb. 2—Ravioli, buttered green peas, bread and butter, applesauce, milk.

Friday, Feb. 3—Cheese and sausage pizza, tossed salad with dressing, butterscotch pudding, fresh fruit, milk.

Monday, Feb. 6—Chicken patty on bun, tater tots, vegetable sticks, pear half, milk.

Tuesday, Feb. 7—Homemade Italian spaghetti, warm French bread with butter, broccoli, sliced pineapple, milk.

Wednesday, Feb. 8—Chicken gumbo soup with crackers, deli turkey sandwich, dill pickles, fresh fruit, milk.

Thursday, Feb. 9—Tacos with sauce, lettuce, tomato and cheese, buttered corn, fruit punch, sliced peaches, milk.

### Rose B. Venne

527 Wilkinson St.  
Chelsea

Rose B. Venne, 73, of 527 Wilkinson St., Chelsea, died at her home last Friday.

She was born Oct. 10, 1910, in Canada, the daughter of Alfred and Eva (Gauthier) Venne, and had been a resident of Chelsea for 18 months, coming from Detroit. She was retired from the Cadillac Division of General Motors Corp.

Surviving are a brother, Ed Venne of Windsor, Ontario; two sisters, Bertha Robert of Southfield and Sister Paula Venne of Sudbury, Ontario, and several nieces and nephews.

Mass of the Resurrection was held Monday at St. Mary's Catholic church with Miss Venne's nephew, the Rev. Fr. Darin Robert, chaplain of University of Michigan Hospital, officiating. Burial was in Mt. Olivet Cemetery.

Arrangements were made by the Staffan-Mitchell Funeral Home.

### Rose Mary Laier

1140 S. Lima Center Rd.  
Chelsea

Mrs. Rose Mary Laier of 1140 S. Lima Center Rd., Chelsea, died Jan. 20 at her home at the age of 82.

She was born March 3, 1901, in Sylvan township, the daughter of George and Barbara (Doerfer) Merkel, and was a life-long resident of Chelsea. She was a member of St. Mary's Catholic church, the Altar Society, and the Michigan Milk Producers Association.

Survivors include five sons, Carl W. A. Edward, Robert F. and Donald A., all of Chelsea, and Thomas A. of Milan; two daughters, Sister Helen Z. Laier of Chelsea and Mrs. Theresa M. Trumbull of Pinellas Park, Fla.; and a brother, Joseph T. Merkel, Sr., of Chelsea and five grandchildren. She was preceded in death by two brothers and three sisters.

Mass of the Resurrection was held yesterday at St. Mary's Catholic church with the Rev. Fr. D. Philip Dupuis and the Rev. Fr. Joseph Rinaldo officiating. The

rosary was recited Monday at the Staffan-Mitchell Funeral Home, Chelsea.

Burial was in Mt. Olivet Cemetery, Chelsea.

### Peter Godzik

13123 Island Lake Rd.  
Chelsea

Peter Godzik of 13123 Island Lake Rd., Chelsea, Dexter township, died Wednesday, Jan. 25 at University of Michigan Hospital. He was 75 years of age.

He was born April 4, 1908 at Lorain, O., the son of John and Theodora Zavinsky Godzik.

He had been a resident of Dexter township for the past 3½ years, coming from Detroit. He was a member of St. Joseph's Catholic church of Dexter and during the summer of St. Nicholas of Lark Lake.

He was preceded in death by his wife, Helen on March 22, 1981.

He is survived by one son, Edward P. Godzik of Lake Orion; a daughter, Mrs. Frederick (Stella) Glassford of Chelsea;

four brothers, Michael of Pellston, Anthony of Levering, John of Petoskey, Alex of Canada; three sisters, Mrs. John (Mary) Coveyou of Petoskey; Mrs. Ed (Anna) Cembrowicz of Pellston; Mrs. Edward (Stella) Bochenek of Lincoln Park; five grandchildren and several nieces and nephews.

He was also preceded in death by a brother Walter, and two sisters, Helen Pyjar and Angie Lukasiak.

Friends were received at the Hosmer Funeral Home in Dexter Saturday where a rosary was recited in the evening at 8 o'clock.

Mr. Godzik was taken to Winchester-Hallead Funeral Home at Petoskey where a rosary was recited Sunday at 8 p.m. Funeral services were held Monday, Jan. 30 at 11 a.m. at St. Francis Catholic church in Petoskey with the Rev. Fr. Medard Buvala officiating. Burial will take place at St. Nicholas Cemetery at Lark Lake.

## Births Page Six



MARY KATHRYN WEBER is retiring as a full-time teacher at South Elementary school after 22 years beginning in 1962, and was pictured with some of her pupils at a retirement party held for her at

the school last week. She isn't giving up teaching completely and hopes to be back at the school frequently as a substitute.

## Fair Board Turns Down Scout-O-Rama Request

The Chelsea Community Fair Board has turned down a request to hold a Boy Scout-O-Rama at the fairgrounds in late May because its buildings will be filled with vehicles until June 1.

"We lease rental parking space for cars, trucks, trailers, boats and other vehicles," fair board spokesman John Wellnitz explained. "The leases generally run from Oct. 1 through June 1."

Except for the activities building, which is available throughout the year, our buildings are full of stored vehicles. We make a little

money by leasing the space."

The decision to deny the Scout-O-Rama was made at the Jan. 24 meeting of the fair board.

Present were president Bill Stoffer, vice-president Jerry Herrick, secretary Mary Ann Guenther, executive vice-president Lloyd Grau, and directors Richard Bollinger, Harold Gross, Gary Houle, John Klink, Jeff Layher, Joe Merkel, Bill Nixon, Mark Stapish, Tom Dault and Jerry Heydlauff.

Items discussed included the treasurer's report for last year's

operation, suggestions for an audit, prices for daily and season tickets, and ideas for this year's fair entertainment and program. The 1984 fair dates are Aug. 28-Sept. 1.

## SPAGHETTI SUPPERS

Every Saturday Night

Feb. 4-11-18-25 and March 3-10-17-24-31

MASONIC TEMPLE

113 West Middle, Chelsea

\$3.50 adults - children ½ price

# TGIF

S M T W T F S

**THANK GOODNESS  
IT'S FEBRUARY...  
MAGNAVOX  
REBATE MONTH**

The newest in America.  
The biggest in the world.

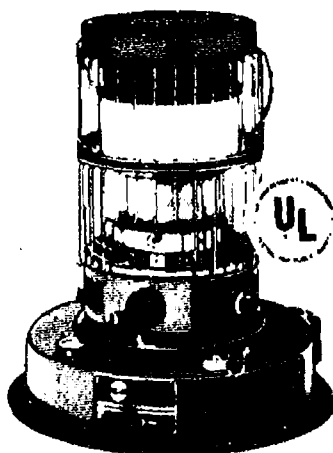
## TOYOSTOVE™ PORTABLE KEROSENE HEATERS.

TOYOSTOVE, made by the number 1 manufacturer of kerosene heaters in the world...

## EXCLUSIVE DOUBLE CLEAN™ HEATERS.

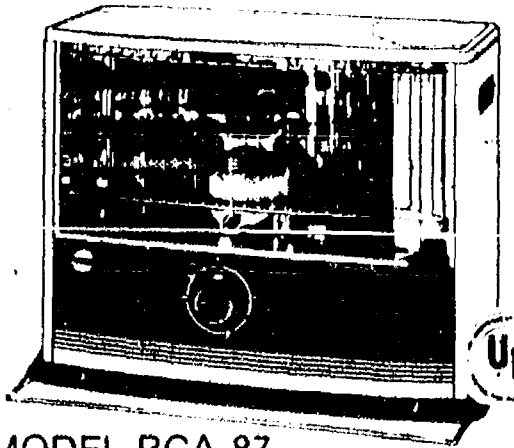
Ten times cleaner  
than conventional  
kerosene heaters.

- Double Clean heaters burn fuel twice for almost zero carbon monoxide emission. In fact, performance is more than 10 times greater than conventional heaters tested.
- Adjustment of heat out-put over a 30% level means more comfortable temperatures and far less fuel consumption.
- 3-step wick adjustment extends wick life by 50%.



MODEL KRA-105  
17,500 BTU's

ONLY **\$209<sup>95</sup>**



MODEL RCA-87  
9,400 BTU's

ONLY **\$189<sup>95</sup>**

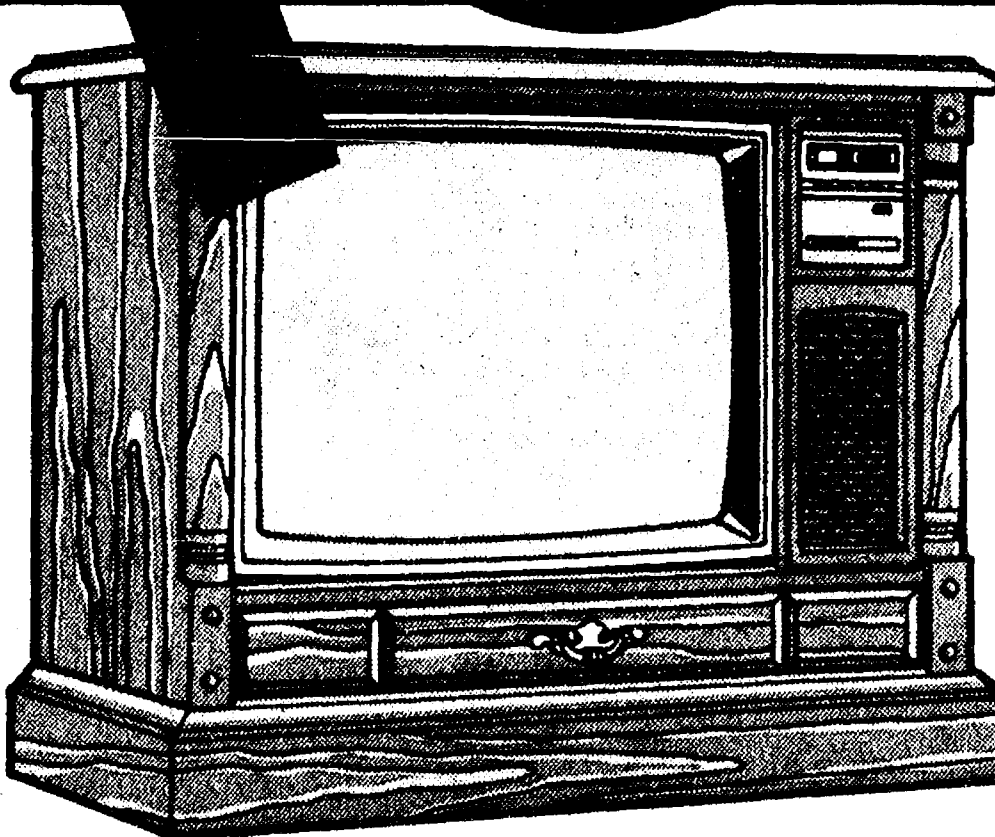
Close-out on '83 Model Kerosene Heaters  
PRICES START AT \$89<sup>00</sup>

# GAMBLES

110 N. Main St., Chelsea

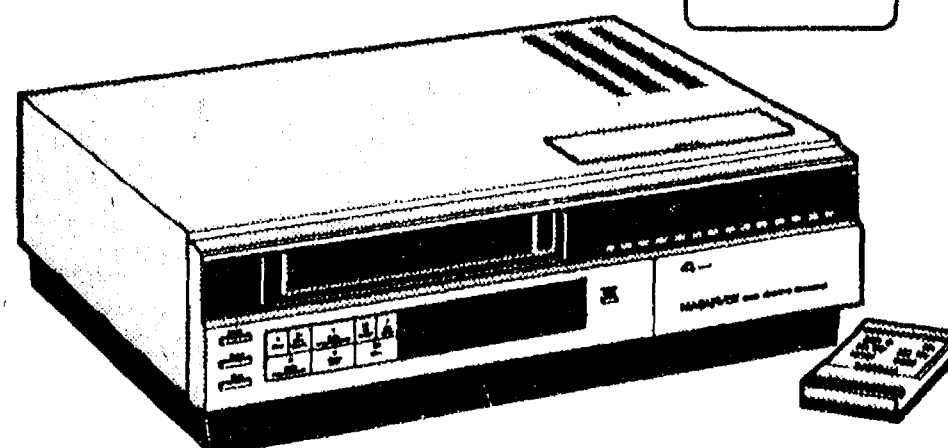
Ph. 475-7472

Open Daily 8:30-5:30, Mon. & Fri. Till 8:30



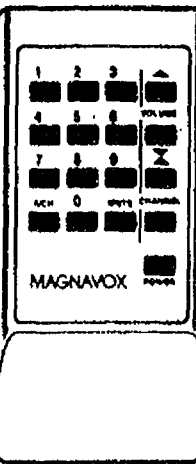
**25" Diagonal Videomatic Console** • Infrared remote control • Random access and scan tuning • 125 channel capability • Videomatic • RF switcher • Stereo/SAP jack • 100° in-line picture tube • LED channel display • Automatic AFT • RDC286PE

**\$50 REBATE**



**8-Hour VHS Video Cassette Recorder** • Four head system • Front load • 14 day/2 event programmer • 14 position electronic tuner • Daily event feature • Search Forward/Reverse • Still/Frame Advance/Slow Motion • 10-function wired remote • 105 channel capability • Auto TV/VCR switching • One touch record • Electronic function display • VR8430BK

**\$50 REBATE**



VISA

# HEYDLAUFF'S

113 N. Main, Chelsea

Ph. 475-1221

**\$20 TO \$100  
REBATES ON  
SELECTED MAGNAVOX  
VIDEO PRODUCTS — THRU  
FEBRUARY 25th ONLY!**

Furthering the tradition of Valentine's Day, Magnavox is helping to make February truly the month of love, because you — and your budget — will love the meaningful rebate savings being offered on selected Magnavox video products — through February 25th only!

We've specially selected some of our most popular color portables and consoles... three quality projection TV models... plus, top quality Magnavox videocassette recording equipment — and tagged them for rebates of up to \$100 — mailed direct to you by Magnavox!

Come in while these special models are in plentiful supply! Then — watch the mail for your Magnavox rebate check. It's our way of making February your favorite month of the year. But hurry! Magnavox rebate days end February 25th!

**MAGNAVOX**  
The brightest ideas in the world  
are here today.